

Methods for prioritizing protected areas using individual and aggregate rankings

Article

Published Version

Creative Commons: Attribution 4.0 (CC-BY)

Open Access

Carvalho, F. ORCID: <https://orcid.org/0000-0002-6305-5602>,
Brown, K. A. ORCID: <https://orcid.org/0000-0002-6342-8966>,
Gordon, A. D. ORCID: <https://orcid.org/0000-0002-1807-4644>,
Yesuf, G. U. ORCID: <https://orcid.org/0000-0003-0963-2998>,
Raherilalao, M. J., Raselimanana, A. P., Soarimalala, V.
ORCID: <https://orcid.org/0000-0002-2455-2956> and Goodman,
S. M. ORCID: <https://orcid.org/0000-0001-9318-0570> (2020)
Methods for prioritizing protected areas using individual and
aggregate rankings. *Environmental Conservation*, 47 (2). pp.
113-122. ISSN 1469-4387 doi:
<https://doi.org/10.1017/S0376892920000090> Available at
<https://centaur.reading.ac.uk/99053/>

It is advisable to refer to the publisher's version if you intend to cite from the work. See [Guidance on citing](#).

To link to this article DOI: <http://dx.doi.org/10.1017/S0376892920000090>

Publisher: Cambridge University Press

All outputs in CentAUR are protected by Intellectual Property Rights law, including copyright law. Copyright and IPR is retained by the creators or other copyright holders. Terms and conditions for use of this material are defined in

the [End User Agreement](#).

www.reading.ac.uk/centaur

CentAUR

Central Archive at the University of Reading

Reading's research outputs online



Research Paper

Cite this article: Carvalho F, Brown KA, Gordon AD, Yesuf GU, Raheerilalao MJ, Raselimanana AP, Soarimalala V, Goodman SM (2020) Methods for prioritizing protected areas using individual and aggregate rankings. *Environmental Conservation* **47**: 113–122. doi: [10.1017/S0376892920000090](https://doi.org/10.1017/S0376892920000090)

Received: 28 September 2019

Revised: 14 February 2020

Accepted: 17 February 2020

First published online: 19 March 2020

Keywords:

conservation triage; expert knowledge; forest loss acceleration; Madagascar; Markov chain algorithm; PageRank algorithm

Author for correspondence:

Dr Fabio Carvalho, Email: fabiocgs@yahoo.com

© Foundation for Environmental Conservation 2020. This is an Open Access article, distributed under the terms of the Creative Commons Attribution licence (<http://creativecommons.org/licenses/by/4.0/>), which permits unrestricted re-use, distribution, and reproduction in any medium, provided the original work is properly cited.

Methods for prioritizing protected areas using individual and aggregate rankings

Fabio Carvalho¹ , Kerry A Brown² , Adam D Gordon³ , Gabriel U Yesuf¹ , Marie Jeanne Raheerilalao^{4,5}, Achille P Raselimanana^{4,5}, Voahangy Soarimalala^{4,6} and Steven M Goodman^{4,7}

¹Lancaster Environment Centre, Lancaster University, Lancaster, LA1 4YQ, UK; ²Department of Geography, Geology and the Environment, Kingston University London, Penrhyn Road, Kingston upon Thames, KT1 2EE, UK; ³Department of Anthropology, University at Albany (SUNY), 1400 Washington Avenue, Albany, New York, NY 12222, USA; ⁴Association Vahatra, BP 3972, Antananarivo 101, Madagascar; ⁵Zoologie et Biodiversité Animale, Faculté des Sciences, Université d'Antananarivo, BP 906, Antananarivo 101, Madagascar; ⁶Institut des Sciences et Techniques de l'Environnement, Université de Fianarantsoa, BP 1264, Fianarantsoa 301, Madagascar and ⁷Field Museum of Natural History, 1400 South Lake Shore Drive, Chicago, IL 60605-2496, USA

Abstract

Despite their legal protection status, protected areas (PAs) can benefit from priority ranks when ongoing threats to their biodiversity and habitats outpace the financial resources available for their conservation. It is essential to develop methods to prioritize PAs that are not computationally demanding in order to suit stakeholders in developing countries where technical and financial resources are limited. We used expert knowledge-derived biodiversity measures to generate individual and aggregate priority ranks of 98 mostly terrestrial PAs on Madagascar. The five variables used were state of knowledge (SoK), forest loss, forest loss acceleration, PA size and relative species diversity, estimated by using standardized residuals from negative binomial models of SoK regressed onto species diversity. We compared our aggregate ranks generated using unweighted averages and principal component analysis (PCA) applied to each individual variable with those generated via Markov chain (MC) and PageRank algorithms. SoK significantly affected the measure of species diversity and highlighted areas where more research effort was needed. The unweighted- and PCA-derived ranks were strongly correlated, as were the MC and PageRank ranks. However, the former two were weakly correlated with the latter two. We recommend using these methods simultaneously in order to provide decision-makers with the flexibility to prioritize those PAs in need of additional research and conservation efforts.

Introduction

Conservation triage is the process of prioritizing efforts to ensure effective allocation of scarce resources (e.g., financial, knowledge) in order to maximize conservation returns (Bottrill et al. 2008). Considering that biodiversity conservation is severely underfunded (Echols et al. 2019), particularly in tropical developing countries (Brooks et al. 2009), there is an urgent need to prioritize efforts to protect areas of high biodiversity and conservation value (Gerber et al. 2018). The generally accepted strategy for promoting biodiversity conservation is the establishment of protected areas (PAs) (Kullberg et al. 2019), but their performance is contingent on the amounts of financial and technical resources allocated to ensure effective management (Barnes et al. 2018). If resources are limited, PAs can be underfunded, understaffed or inefficiently managed (Le Saout et al. 2013). Ideally, PAs should be established in order to promote biodiversity, enhance ecosystem services and safeguard features of particular conservation value within landscapes (Bertzky et al. 2012). However, they are often established in landscapes with the lowest opportunity costs (Joppa & Pfaff 2009). Therefore, prioritization of PAs within existing networks will be necessary at an international scale given continued and intense human pressure on protected land (Jones et al. 2018).

Conservation triage generally relies on spatial data in order to identify and quantify biodiversity and other features of conservation value across diverse landscapes (Kukkala & Moilanen 2013). It often requires cumbersome pre- and post-data processing and a detailed assessment of whether its results are relevant for local conditions and the identified conservation goals (Lehtomäki & Moilanen 2013). Moreover, prioritizing areas within an existing PA network may be particularly challenging (Alagador et al. 2014). PAs are often discrete units within heterogeneous and fragmented landscapes surrounded by different types and intensities of land use that can make spatially explicit and computationally intensive methods challenging (Margules & Pressey 2000). Conservation triage of existing PAs may thus be hindered by data

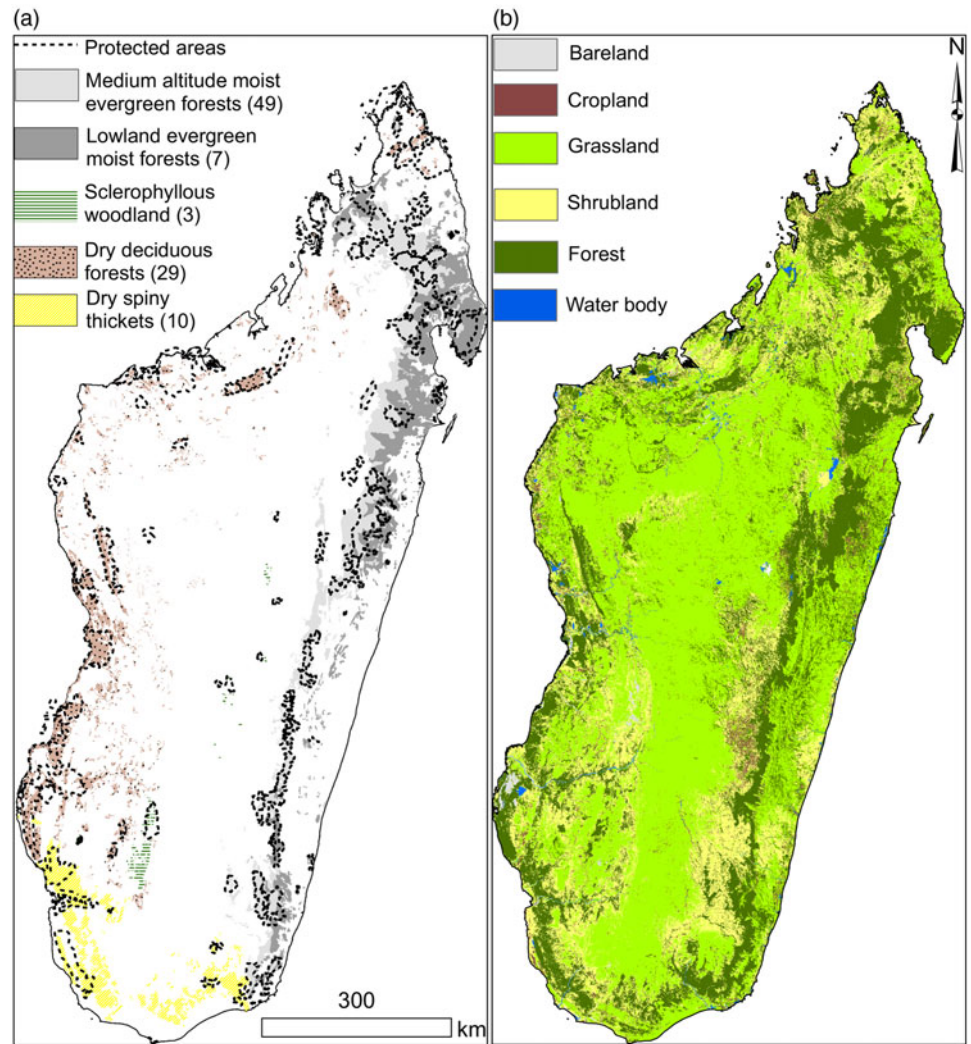


Fig. 1. (a) Vegetation types of the 98 mostly terrestrial protected areas (PAs) on Madagascar and (b) major land cover types on the island (modified from European Space Agency Climate Change Initiative (ESA CCI) 2015 global datasets). Numbers in brackets in panel a denote numbers of PAs for each type of vegetation. Map projection: Geographical Coordinate System (GCS) using the WGS1984 datum.

limitations on biodiversity and inherent complications associated with the use of biogeographical spatial data (Brooks et al. 2006). Consequently, conservationists should employ tools that are not computationally demanding, particularly in developing countries with scarce institutional support and technical capacity (Gardner et al. 2015).

One alternative solution is to employ multivariate methods that use indicators of pressures and/or threats to habitat conservation (e.g., rates of habitat loss) in order to help predict the potential of PAs to maintain continuous and diverse habitats that reduce their vulnerability to degradation, fragmentation and the loss of rare and endemic species (Nolte et al. 2013). Understanding the current state of expert knowledge (SoK) associated with a site's biodiversity might be an important first step towards prioritizing existing PAs (Keppel 2014). The use of expert knowledge in conservation has been crucial to the elucidation of the distribution and status (e.g., conservation, endemism) of different taxa (Martin et al. 2018) and their responses to land-use and climate change (Murray et al. 2009). However, development pressures may hinder experts' future ability to study and understand the biodiversity covered by PAs (Barber et al. 2012). Since relative species diversity may be dependent on how much we know about a site (Murray et al. 2009), SoK is an important variable to include in the

prioritization of PAs within an existing network. In fact, using observed diversity as a criterion for conservation triage without controlling for SoK can potentially misestimate the total diversity in PAs (Brown et al. 2018).

The aim of this study is to investigate the performance of site prioritization techniques that can be used to rank the conservation priority of PAs established within an existing network. Our objective is to demonstrate how individual and aggregate priority ranks of PAs can be produced by simple heuristic techniques (*sensu* Gardner et al. 2015) that are not computationally demanding. Our multivariate ranks are intended to provide flexibility to stakeholders in terms of the allocation of priorities and to be easily implemented in biodiversity hotspots around the world. We show that employing different methods and including SoK in the estimation of species diversity have significant effects on the ranking of PAs, and we discuss the merits of using individual- and aggregate-based rankings when prioritizing PAs for conservation under limited financial and technical resources. We use five key variables (SoK, forest loss, acceleration in forest cover loss/gain, PA size and multi-taxon species diversity) and the mostly terrestrial PA network of Madagascar (Fig. 1) (Goodman et al. 2018) in order to illustrate the applicability of the method.

Table 1. Description of the five variables used to build individual and aggregate priority ranks of protected areas. Variables designated as having taxon-specific values are recorded separately for eight different taxonomic groups at each site. These eight values are combined into a single site-specific value following procedures described in the 'Methods' section.

Variable description	Type/unit	Range	Compilation/computation	Taxon-specific values
State of knowledge (based on field surveys and taxonomic research conducted at each protected area)	Ordinal	1 (no information) to 5 (well known) – see Table 2 for details	Surveys of Malagasy terrestrial vertebrates by four field experts	Yes
Species diversity – absolute (actual)	Species count	0 to 152	Historic and recent biological survey data	Yes
or	or	or		
Relative (based on standardized residuals of negative binomial models)	Residual species count	–1.00 to 3.82		
Forest loss (logged proportional change in forest cover between 1996 and 2016)	Log-transformed ratio	–0.704 to 0	$\log_{10}(\text{2016 area}/\text{1996 area})$	No
Acceleration in forest cover loss/gain (proportional difference between forest loss of the later period (2006–2016) and the earlier period (1996–2006))	Log-transformed ratio	–0.184 to 0.704	$\log_{10}((\text{2016 area}/\text{2006 area})/(\text{2006 area}/\text{1996 area}))$	No
Protected area size (forest area in 2016)	Log-transformed area (hectares)	1.51 to 5.54	$\log_{10}(\text{forest area})$	No

Methods

Study setting

Madagascar is an area of global conservation priority characterized by high species diversity and heterogeneity (Goodman & Benstead 2004), high rates of floral and faunal endemism (Callmander et al. 2011) and documented vulnerability to habitat change for certain taxonomic groups (Raxworthy & Nussbaum 2000). Within the terrestrial PAs of the island, forest ecosystems make up one of the main types of natural vegetation with a rich assortment of plants and animals, including many endemics even at higher taxonomic levels. The native vegetation of the island is treated in detail elsewhere (Gautier et al. 2018, Lowry II et al. 2018), with specific reference to the PA system of Madagascar. Loss of natural forests is the greatest threat to the terrestrial biodiversity of the island, and the pressure remains considerable (Vieilledent et al. 2018, Yesuf et al. 2019).

In an effort to address continued habitat loss, Madagascar has experimented with different PA governance strategies, ranging from strict to shared governance (Virah-Sawmy et al. 2014). The country has also invested heavily in broadening its PA network through the Durban Vision, going from 47 sites to 122 sites between 2003 and 2015, which increased the total area under protection (terrestrial and marine) from 1.7 million ha to 7.1 million ha (Gardner et al. 2018). The main conservation goals of Madagascar's PAs have evolved over time (Langrand & Roland 2018). Many PAs were originally established for biodiversity conservation, scientific research and recreation (International Union for Conservation of Nature (IUCN) categories Ia, II and IV). However, there has been a recent shift towards promoting multiple-use sites that allow sustainable extraction of natural resources (e.g., construction and fuel wood) in order to encourage poverty mitigation and community development (IUCN categories V and VI) (Rakotoson & Razafimahatratra 2018). Therefore, the current conservation goals for Madagascar's PA network are diverse, ranging from conserving biodiversity and maintaining ecosystem services to promoting the sustainable use of natural resources and maintaining genetic diversity (Langrand & Roland 2018).

Variables used to rank PAs

The study focused on 98 mostly terrestrial PAs on Madagascar (Fig. 1) (Goodman et al. 2018). The ranking of PAs was based on five sets of variables collected at each site (Table 1), as follows:

1. *SoK*: taxon-specific SoK was assessed by four different experts for eight vertebrate taxonomic groups (amphibians, reptiles, birds, tenrecs, rodents, bats, carnivorans and lemurs) at each of the 98 sites. Over 100 years of field surveys and associated taxonomic research was conducted between them on Malagasy terrestrial vertebrates: amphibians and reptiles (APR), birds (SMG and MJR), tenrecs and rodents (SMG and VS) and bats, carnivorans and lemurs (SMG). This variable is a measure of their assessment of the relative level of knowledge for each group at each site, which includes the degree of local research in the form of biological inventories and associated taxonomic research, superimposed on the habitat and elevational complexity of the site. SoK was an ordinal variable ranging from 1 (no information) to 5 (well known) (Table 2).
2. *Species diversity*: absolute species diversity (number of species) for each of the eight taxonomic groups was compiled from historic and recent biological survey data available for the 98 sites. Given the strong dependence of species diversity on SoK across all taxa, even when controlling for differences in PA size (Appendix S1.1, available online), we also estimated relative species diversity within each of the eight taxonomic groups using standardized residuals from negative binomial models of species diversity regressed onto SoK (Appendix S1.2) in order to account for between-site variance in species diversity within SoK categories. We used the standardized residual values as measures of relative species diversity for each taxon across sites when taking SoK values into account.
3. *PA size*: forest cover at each site was assessed for 1996, 2006 and 2016 (Goodman et al. 2018). PA size was calculated as the base-10 logarithm of remaining forest area (in hectares) within each PA as of 2016. Forest cover was not detected for four PAs (Lac Alaotra, Ampanangandehibe-Behasina, Ibity and Itremo), either because the forest parcels were too small or because no forest was present (e.g., Lac Alaotra is a lake).
4. *Forest loss*: forest cover change was calculated as the logarithm of overall relative change in forest cover between 1996 and 2016 (i.e., the difference in the logged values of forest cover in 2016 and 1996, or $\log(\text{2016 area}/\text{1996 area})$). Positive values indicate an increase in forest cover, while negative values indicate a loss (higher-magnitude values indicate a greater change). While most accurately described as logged proportional change in forest cover, hereafter this variable is referred to as 'forest loss'.

Table 2. Explanation of the state of knowledge (SoK) classification (modified from table 391 in Brown et al. 2018, pp. 1693–1705). SoK was specified differently for birds and lemurs (specimens were generally not important for specific identification as these organisms are relatively easy to identify visually) and other land vertebrates (specimens were often important for specific identification as many of the species can only be identified in hand or based on different morphological characteristics).

SoK	Classification	Definition for birds and lemurs	Definition for other land vertebrates
1	No information	Zero observations	No information or specimens
2	Little information	Observations from 1 or 2 researchers/visitors per group	Non-systematic collections or observations available (not comprehensive)
3	Moderately well known	Observations from 2 or 4 researchers/visitors per group and biological inventory	Systematic collections or observations available and information notably incomplete
4	Reasonably well known	Observations from 5+ researchers/visitors per group and a detailed biological inventory	Systematic collections or observations available and information partially incomplete
5	Well known	Widely visited and presumably few taxa can be added with additional intensive efforts	Considerable amount of information available based on systematic collections and observations, and it is presumed that few taxa can be added with additional intensive efforts

5. *Acceleration in forest cover loss/gain*: the acceleration in forest cover change was calculated as the logged proportional difference between forest cover change of the later period (2006–2016) and the earlier period (1996–2006) as $\log((2016 \text{ area}/2006 \text{ area})/(2006 \text{ area}/1996 \text{ area}))$. Negative values indicate an increase in forest loss or slowing/reversal of forest gain, while positive values indicate a slowing or reversal of forest loss.

The conservation goals of our prioritization scheme, as applied to the existing terrestrial PA network of Madagascar, were to: (1) identify priority PAs where knowledge gaps indicate more research effort is needed in order to understand the local biodiversity given current rates of forest loss; (2) identify priority PAs where habitat degradation has increased in recent years and are therefore particularly vulnerable to the loss of unique species in the near future and in urgent need of conservation intervention; and (3) identify priority PAs of high species diversity and therefore of high conservation value.

Combining taxon-specific variables

While some variables had site-specific values that did not differ by taxon (forest loss, acceleration in forest cover loss/gain and PA size), others had eight values per site, each associated with a different taxon (SoK and species diversity). We used two different approaches in order to combine information across all eight taxa into single site-specific values for those variables: either by estimating the first principal component (PC1) of a principal component analysis (PCA) of all eight taxon-specific variables in order to generate site-specific PC1 scores (Appendices S1.3 & S1.4) or by calculating an unweighted mean of the values across all eight taxonomic groups for each site. Rankings based on either the PCA-generated values or the unweighted means of taxon values were likely to be similar given that all taxa loaded in the same direction on PC1 when partitioning the variance among variables (Appendix S1.5).

Triage scenarios (individual and aggregate methods)

After completion of all of the above procedures, all site-specific variables were standardized to mean zero and unit variance. In order to generate aggregate ranks, we first binned sites into different priority groups by identifying natural breaks in the distribution of standardized values for each variable or creating bins one standard deviation wide if no natural breaks were apparent (Appendix

S1.6). Sites that fell within the same bin for a given variable (e.g., SoK) were considered of equal priority with respect to that variable. We used the following subjective criteria:

1. *SoK*: we split standardized data into five bins one standard deviation wide. We assigned highest priority (lowest rank) to PAs for which SoK was low.
2. *Forest loss*: we used natural breaks in standardized forest loss (forest cover in c. 2016 relative to c. 1996) in order to assign sites to four bins. We assigned highest priority to PAs with high proportional forest cover loss.
3. *Acceleration in forest cover loss/gain*: we used natural breaks in the rate of change of forest loss to assign sites to three bins (corresponding to increasing loss in the 2006–2016 period relative to the earlier period, little to no difference between the two periods or decreasing loss in the 2006–2016 period). We prioritized PAs with accelerated forest cover loss.
4. *PA size*: we split standardized log-transformed data for forest area remaining in each PA in 2016 into five bins one standard deviation wide. We assigned highest priority to small PAs with low remaining forest cover.
5. *Relative species diversity*: we used natural breaks in standardized residual species diversity across taxa when SoK was held constant in order to assign sites to five bins. We prioritized PAs with higher-than-expected species diversity.

We first ordered sites by SoK priority bin, then within each SoK priority bin by forest loss priority, then within each forest loss priority bin by acceleration in forest cover loss/gain priority, then by PA size priority and finally by relative species diversity priority. This procedure produced an overall priority ranking for each site. We assigned identical overall priority ranks to sites that fell within the same priority bins for all variables. We used these criteria to build two aggregate rankings because we used two different procedures in order to produce site-specific SoK and relative species diversity values: a mean ranking based on variables constructed from unweighted means of taxon values and a PCA ranking that included variables produced by the PCA of taxon values.

Alternative aggregate priority rankings

The aggregation methods described above imposed *a priori* assumptions about the relative importance of different types of information in prioritizing PAs. For example, more importance was placed on SoK than on any other variable. It then used the

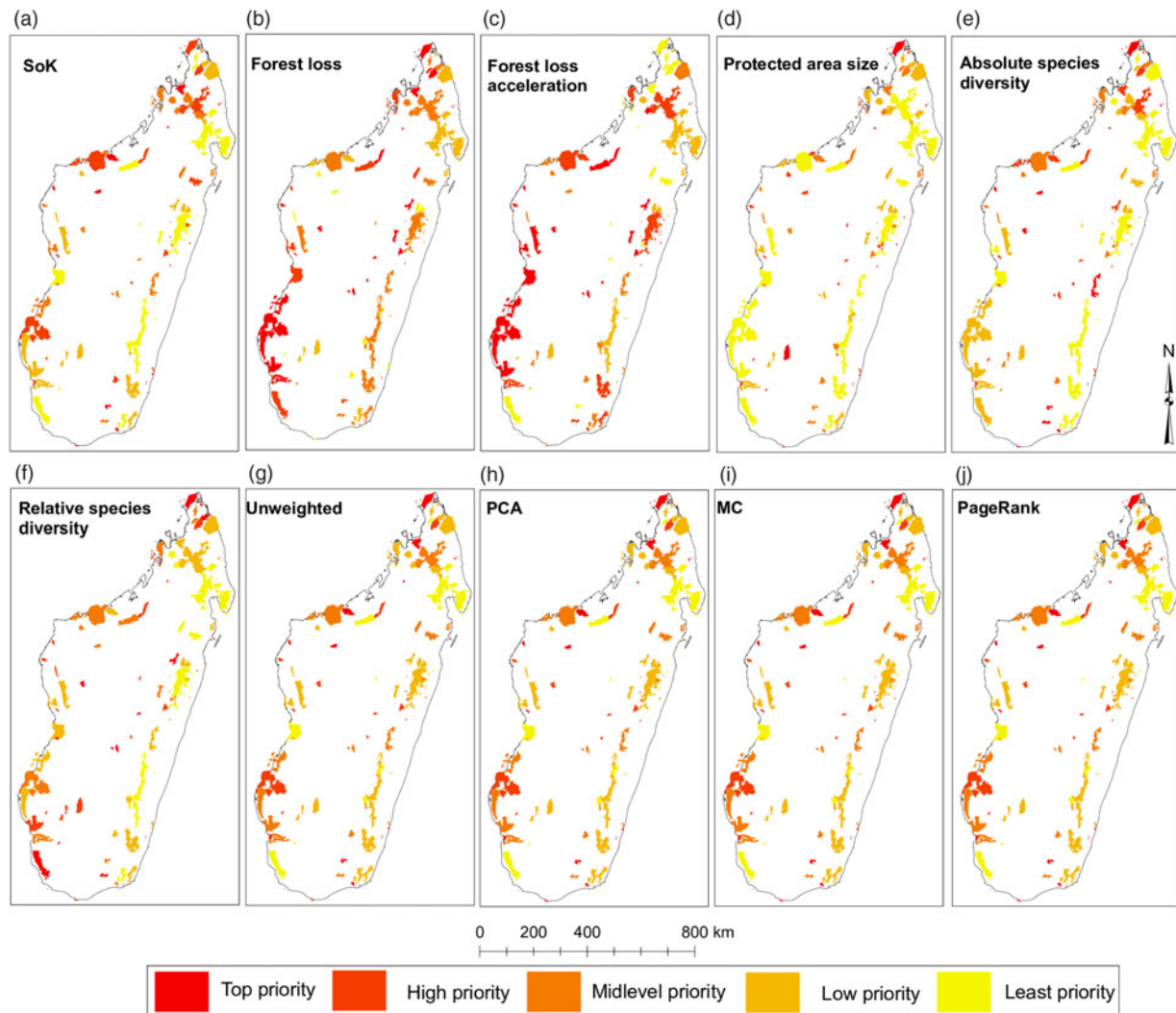


Fig. 2. Protected areas (PAs) on Madagascar categorized by individual (a–f) and aggregate (g–j) priority rankings. Ranks were binned in intervals of 20 and classified into five categories (see legend). Categories may have more than 20 PAs due to tied rankings (see Appendix S2). Map projection: geographical coordinate system (GCS) using the WGS1984 datum. MC = Markov chain; PCA = principal component analysis; SoK = state of knowledge.

other variables to rank within SoK bins. We also implemented the Markov chain (MC) algorithm by Dwork et al. (2001) using R code from Wilkinson and Van Duc (2017). This method finds consensus among various expert opinions when the same set of objects are ranked on the same criteria. Here, we used this method to rank the same set of PA sites being ranked on different criteria. In essence, we treated each type of information (i.e., SoK, forest loss, acceleration in forest cover loss/gain, PA size and relative species diversity) as a different ‘expert opinion’ and used the MC algorithm in order to identify a set of consensus ranks among them. We also implemented the PageRank algorithm from Wilkinson and Van Duc (2017). We then used Kendall’s tau to examine the association between all pairwise combinations of priority aggregate ranks (unweighted-derived, PCA-derived, MC and PageRank). We performed all data analyses in R (R Development Core Team 2019).

Spatial distribution of individual priority rankings

We used Moran’s I tool in ArcGIS (Mitchell 2005) in order to test whether individual priority rankings were randomly distributed

among the 98 PAs. We performed spatial analyses at the country level and at the regional level (east and west) by grouping PAs according to their geographical location or, where location was ambiguous (e.g., PAs in the Central Highlands), by their dominant vegetation (Appendix S1.7). We classified PA priority ranks as either clustered, random or dispersed (Appendix S1.7). In addition to Moran’s I index, we estimated z-scores and p-values in order to check for significance in the observed patterns.

Results

Individually ranked variables

The spatial distribution of priority ranks based on individual variables showed some degree of regional bias, as most of the variables presented spatial clustering at the country level and along the eastern corridor (Fig. 2a–f, Table 3 & Appendix S2). Overall, PAs in the west seem to have been relatively little studied compared to those in the east, which may also have resulted in lower levels of relative species diversity, as evidenced by the spatial clustering of high-priority ranks for SoK (Fig. 2a) and absolute (Fig. 2e) and

Table 3. Results of spatial autocorrelation analyses using Moran's *I* in order to assess the distribution of priority ranks between protected areas (PAs) using individual variables. Analyses were performed at the country level and for the eastern and western corridors separately. CEC = contiguity of edges and corners; CEO = contiguity of edges only; clust = clustered; rand = random; SoK = state of knowledge; SP = spatial pattern.

	SoK		Forest loss		Forest loss acceleration		PA size		Absolute species diversity		Relative species diversity	
	CEO	CEC	CEO	CEC	CEO	CEC	CEO	CEC	CEO	CEC	CEO	CEC
Country level												
Moran's <i>I</i>	0.44	0.44	0.32	0.32	0.56	0.56	0.56	0.56	0.69	0.69	0.97	0.97
z-score	1.98	1.99	1.47	1.47	2.54	2.54	2.53	2.53	3.09	3.09	4.33	4.33
Variance	0.05	0.05	0.05	0.05	0.05	0.05	0.05	0.05	0.05	0.05	0.05	0.05
p-value	0.05	0.05	0.14	0.14	0.01	0.01	0.01	0.01	0.002	0.002	<0.01	<0.01
SP	clust	clust	rand	rand	clust	clust	clust	clust	clust	clust	clust	clust
Eastern corridor												
Moran's <i>I</i>	0.60	0.60	0.03	0.03	0.26	0.26	0.75	0.75	0.85	0.85	0.77	0.77
z-score	2.41	2.41	0.18	0.18	1.09	1.09	2.98	2.98	3.35	3.35	3.06	3.06
Variance	0.07	0.07	0.07	0.07	0.07	0.07	0.07	0.07	0.07	0.07	0.07	0.07
p-value	0.02	0.02	0.86	0.86	0.28	0.28	<0.01	<0.01	<0.01	<0.01	<0.01	<0.01
SP	clust	clust	rand	rand	rand	rand	clust	clust	clust	clust	clust	clust
Western corridor												
Moran's <i>I</i>	-0.07	-0.07	0.37	0.26	0.64	0.64	0.15	0.15	-0.11	-0.11	0.27	0.27
z-score	-0.08	-0.09	0.89	1.09	1.49	1.49	0.40	0.40	-0.18	-0.18	0.67	0.67
Variance	0.20	0.20	0.20	0.07	0.20	0.20	0.20	0.20	0.20	0.20	0.20	0.20
p-value	0.92	0.92	0.37	0.28	0.14	0.14	0.69	0.69	0.86	0.86	0.50	0.50
SP	rand	rand	rand	rand	rand	rand	rand	rand	rand	rand	rand	rand

relative species diversity (Fig. 2f) in the west (Table 3). SoK (Fig. 2a) was relatively high along the eastern corridor dominated by lowland and medium-altitude evergreen moist forests that resulted in spatial clustering of low-priority ranks for that variable in the east (Table 3). In the western region, covered mostly by dry deciduous forests and dry spiny thickets, SoK (Fig. 2a) ranks were randomly distributed with no bias towards any particular type of vegetation (Table 3).

Rates of forest loss (Fig. 2b) and acceleration in forest cover loss (Fig. 2c) were randomly distributed along both corridors. However, ranks of acceleration in forest cover loss showed spatial clustering at the country level (Table 3), probably because of the high number of 'top-priority' PAs distributed across the two regions (Fig. 2c). The top ranks for PA size (circumscribed by forest area size) were inherently biased towards PAs with small areas of forest cover (Fig. 2d), since that was the ranking criterion for this variable, and they were spatially clustered along the eastern corridor (Table 3).

Absolute and relative species diversity showed distinct priority ranks and confirmed that accounting for SoK (i.e., research effort and subsequent taxonomic research) when generating ranks based on measures of species diversity made a significant difference (Appendix S3). For instance, the dry spiny thickets in the south-west were assigned mid-level ranks when considering absolute species diversity (Fig. 2e), but top ranks when accounting for the level of knowledge of the local biodiversity (Fig. 2f). The ranks of both species diversity measures were spatially clustered along the eastern corridor, but were random in the west (Table 3).

Aggregate priority ranks

Most of the PAs in the top aggregate priority ranks were located along the western corridor (mostly dry deciduous vegetation) and in the northern region (mainly evergreen moist vegetation), regardless of the type of aggregator used to prioritize sites (Fig. 2g-j & Appendix S2). Most of the low-priority PAs were concentrated along the eastern evergreen moist corridor (Fig. 2g-j). The aggregate ranks were significantly correlated with each other

(Appendix S3), but the strengths of the associations changed significantly depending on what pairwise combinations were compared. The unweighted- and PCA-derived ranks were statistically indistinguishable from perfectly correlated ranks, and the MC and PageRank ranks were very strongly correlated with each other (Fig. 3 & Appendix S3). However, the unweighted- and PCA-derived ranks were relatively weakly correlated with the MC and PageRank ranks (Fig. 3), suggesting that each provided a distinct measure of priority.

Discussion

The multivariate methods presented here contribute to conservation triage in biodiversity hotspots and integrate four essential components of data-based conservation efforts: (1) the use of indicators of pressure and/or threat to habitat conservation; (2) the use of expert knowledge derived from field surveys of local biodiversity and subsequent taxonomic research; (3) the flexibility of individually prioritizing pertinent variables for conservation planning; and (4) the aggregation of individual ranks in order to find the best possible consensus among different priorities.

The unweighted- and PCA-derived aggregate ranks gave higher priority to sites with low SoK since this was selected in advance as being the most important individual criterion for ranking sites. Their resulting ranks were thus heavily influenced by the choice of variables deemed to be most important. Little-studied sites such as Ambohidray, Ampanangandehibe-Behasina and Ambondrobe were highly prioritized, even though they did not have particularly high rates of forest loss. This method emphasized areas where field inventory and subsequent taxonomic research efforts should be focused in the near future, regardless of forest loss, PA size or level of biodiversity.

On the other hand, the MC and PageRank aggregators attempted to 'find consensus' among the different variables and assigned similar weights to each of them. Sites with relatively high forest loss (e.g., Pointe à Larrée, Bongolava) and accelerated forest cover loss (e.g., Mangabe-Ranomomena-Sahasarotra) were generally

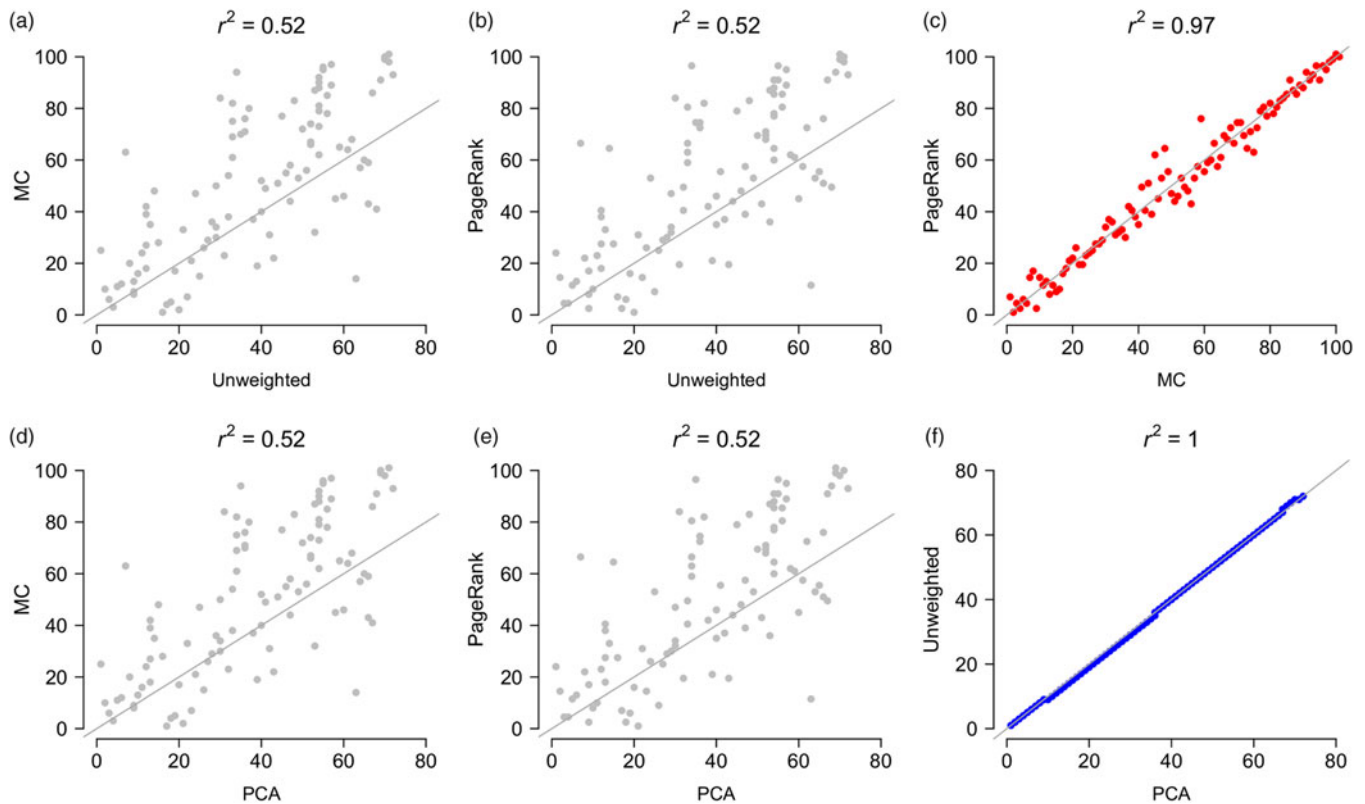


Fig. 3. Pairwise comparisons between the four aggregate rankings (unweighted, PCA, MC and PageRank). Comparisons of the unweighted and PCA ranks with the MC and PageRank ranks (a, b, d & e) are in grey; comparisons between the MC and PageRank ranks (c) are in red and between the PCA and unweighted ranks (f) are in blue. Grey line is an identity (1:1) line (intercept = 0, slope = 1). MC = Markov chain; PCA = principal component analysis.

assigned high priority, emphasizing areas where efforts to halt deforestation should be focused while still considering other factors such as PA size and level of biodiversity. The MC and PageRank aggregators offered the advantage of not being primarily driven by one single variable. However, by treating all sets of ranks as equally important, they may run counter to specific conservation or research priorities. MC and PageRank aggregators can be useful when there is no clear rationale for ordering a preferred set of variables for ranking sites or to limit the influence of single variables that may be affected by data biases. The unweighted and PCA aggregators can be used when stakeholders have clear ideas (and reliable data) about the set of variables to prioritize. We suggest using these different aggregators in combination in order to assess the different outcomes resulting from different variable aggregation methods.

The unweighted approach for combining information from the eight taxonomic groups for a single variable seemed to offer the advantage of not making relatively arbitrary distinctions between sites, such as in the PCA approach. There were major differences between the two approaches for forest loss and acceleration in forest cover loss/gain, with PCA values once again yielding apparently arbitrary distinctions between sites. For those reasons, the unweighted approach seemed the most appropriate when generating individual rankings of SoK, forest loss and acceleration in forest cover loss/gain. Although there were also noticeable differences between the PCA and the unweighted values for both the absolute and relative (residuals) species diversity variables, there was no obvious indication of which was the most appropriate for generating individual rankings. Since there was virtually no difference between them when

calculating overall priority rankings, it was more consistent to use the unweighted individual ranks of the species diversity variables.

The use of expert knowledge made a significant difference when estimating levels of biodiversity within PAs. Sites assigned the highest priorities in terms of relative species diversity were generally assigned mid-rank positions in absolute species diversity (e.g., Lac Alaotra, Mandena and Petriky). Littoral forests and dry spiny thickets were the dominant forms of vegetation among the top ten ranked sites in terms of relative species diversity, and they were generally well studied. On the other hand, PAs dominated by evergreen moist forests and dry deciduous forests comprised most of the top ten ranked sites in terms of absolute species diversity, and they were relatively little studied. It would thus appear that the latter two forest types can potentially support a relatively high number of species compared to other forest types, but more data would be needed before using forest types as a proxy for species diversity, considering the differing levels of SoK between them. As highlighted here and elsewhere (Orsi et al. 2011, Hochkirch et al. 2013), expert-based knowledge of local biodiversity can provide a scoring method for prioritizing conservation units within a network that can facilitate the protection of species-rich sites. It can also provide crucial information when spatial data for conservation planning are limited (Keppel 2014) and be a cost-effective way of generating site-based indicators to be used by decision-makers (Oliver 2002). Expert assessments of biodiversity can be particularly useful in countries where data on the socioeconomic costs of conservation are limited (Klein et al. 2014), and they should play a key role in understanding the spatial distribution of high-priority PAs in developing countries (Keppel 2014). Moreover, regularly

updating site-level SoK could aid in evaluating how well PAs achieve conservation objectives regarding particular species and habitats.

The estimation of two distinct measures of deforestation (forest cover loss and acceleration in forest cover loss) also proved useful. It helped to identify sites that have lost a high proportion of their forest cover and to highlight instances where deforestation has worsened in recent years (Vieilledent et al. 2018). For these reasons, prioritization schemes should apply measures of pressure and/or threat to habitat conservation alongside measures of biodiversity and knowledge-based variables (Campagnaro et al. 2018). If priority ranks were solely based on expert knowledge or species diversity, the final result could erroneously identify areas of top priority that were not under particular risk of degradation.

Individual ranks of carefully selected priority variables can be used in parallel and help decision-makers address multiple conservation goals of existing PA networks. For instance, if prioritizing PAs in order to fulfil the original objectives of Madagascar's PA network of promoting biodiversity conservation and scientific research, stakeholders could rank PAs by relative species diversity and SoK in order to identify sites of highest biodiversity value and in need of more research. In addition, given the current approach on Madagascar of promoting multiple-use PAs for the sustainable extraction of natural resources, variables such as forest loss and acceleration in forest cover loss/gain could be useful in identifying areas where natural resource exploitation has surpassed sustainable levels. Given that some of these sites may now be particularly vulnerable due to recent rapid degradation, our individual ranks could be useful tools for helping decision-makers on Madagascar to identify sites that could be aligned to national initiatives in order to effectively manage natural resource extraction (Gardner et al. 2013). For instance, of the ten sites identified by Gardner (2011) as inappropriate for anthropogenic use due to negative effects on biodiversity, our individual ranking of acceleration in forest cover loss/gain listed six of them in the top 30 priority sites for conservation (Bombetoka Beloboka, Anjozorobe-Angavo, Menabe Antimena, Ranobe PK32, Amoron'i Onilahy and Ankodida).

Other efforts to define priorities for conservation resources on Madagascar and the surrounding region tended to focus on individual taxonomic groups (Herrera 2017) or vulnerable habitats (Watson et al. 2005). However, producing multi-taxonomic and multivariate prioritization ranks of entire PA networks may prove beneficial for developing wide-ranging conservation schemes, since PAs normally comprise an array of endangered endemic species (including micro-endemics) and habitats. Other prioritization methods used on Madagascar (Kremen et al. 2008) showed that single-taxon analysis may indeed fail to capture cross-taxon priorities that might be independent of forest cover and have variable spatial patterns and associated conservation values (Gardner et al. 2015). Therefore, the use of multiple taxonomic groups and variables related to habitat degradation is required in order to produce robust prioritization of investment for conservation across existing PAs in the study region and beyond.

Conclusion

We have shown that prioritizing existing PAs using individual and aggregate ranks can provide flexibility in the selection of variables designed to address continued biodiversity and habitat loss by using standard data analysis techniques that are relatively simple to implement. The use of expert knowledge by active researchers

made a significant contribution to our understanding of species diversity across PAs on Madagascar and highlighted areas most in need of additional research effort to assess local biodiversity patterns. Immediate attention is warranted to the most highly ranked PAs in our priority ranks, particularly those that are highly ranked across different priority variables. Moreover, the use of expert knowledge generated by on-site researchers can be an effective way to bridge the gap between PA managers and the scientific community (Gardner et al. 2013) in order to help identify knowledge gaps and integrate the scientific process into PA management decision-making.

Our study was designed to provide a flexible prioritization scheme for decision-makers on Madagascar and elsewhere, but it was not intended to produce a definitive priority rank of PAs within the country, nor to realign the conservation goals of Madagascar's PAs. Our methods contribute to conservation triage efforts in biodiversity hotspots around the world and can be developed to stakeholders' preferences by weighting variables based on their priorities or by incorporating other variables that are locally pertinent to conservation goals. For instance, variables that reflect important ecosystem services for local communities (Verhagen et al. 2017) and key socioeconomic factors (Di Minin et al. 2017) could be used in conjunction with similar variables presented here in order to further develop our rankings. Their advantage is that they do not require considerable computational power or high-resolution spatial analyses, which are often inaccessible to developing countries, and they can be adapted to the quantity and quality of data available. The Supplementary Material made available online (Appendix S1) contains a summary flowchart of the methodology and can be used as a step-by-step tutorial for guiding those who are interested in applying these methods.

Supplementary material. To view supplementary material for this article, please visit <https://doi.org/10.1017/S0376892920000090>

Acknowledgements. We would like to thank the many Malagasy researchers and students who helped to collect the data on the various field inventories that contributed to this analysis.

Author contributions. SMG, MJR, APR and VS collected data and formulated the ideas for these analyses. ADG and KAB conceived the methods. ADG performed data analyses and produced the ranks. GUY performed the spatial analysis and produced the maps. FC led the writing of the manuscript. All authors contributed substantially through additions and revisions to the text and gave final approval for publication.

Financial support. This project was partially funded by the Critical Ecosystem Partnership Fund. The Critical Ecosystem Partnership Fund is a joint initiative of l'Agence Française de Développement, Conservation International, the European Union, the Global Environment Facility, the Government of Japan and the World Bank. A fundamental goal is to ensure civil society is engaged in biodiversity conservation.

Conflict of interest. None.

Ethical standards. None.

References

- Alagador D, Cerdeira JO, Araújo MB (2014) Shifting protected areas: scheduling spatial priorities under climate change. *Journal of Applied Ecology* 51: 703–713.
- Barber CP, Cochrane MA, Souza C, Veríssimo A (2012) Dynamic performance assessment of protected areas. *Biological Conservation* 149: 6–14.

- Barnes MD, Glew L, Wyborn C, Craigie ID (2018) Prevent perverse outcomes from global protected area policy. *Nature Ecology & Evolution* 2: 759–762.
- Bertzky B, Corrigan C, Kemsey J, Kenney S, Ravilious C, Besançon C, Burgess N. (2012) *Protected Planet Report 2012: Tracking Progress towards Global Targets for Protected Areas*. Gland, Switzerland and Cambridge, UK: IUCN and UNEP-WCMC.
- Bottrill MC, Joseph LN, Carwardine J, Bode M, Cook C, Game ET et al. (2008) Is conservation triage just smart decision making? *Trends in Ecology & Evolution* 23: 649–654.
- Brooks TM, Mittermeier RA, da Fonseca GAB, Gerlach J, Hoffmann M, Lamoreux JF et al. (2006) Global biodiversity conservation priorities. *Science* 313: 58–61.
- Brooks TM, Wright SJ, Sheil D (2009) Evaluating the success of conservation actions in safeguarding tropical forest biodiversity. *Conservation Biology* 23: 1448–1457.
- Brown KA, Gordon A, Carvalho F, Yesuf G (2018) Madagascar protected area prioritization: a road map for conservation. In: *The Terrestrial Protected Areas of Madagascar: Their History, Description, and Biota*, eds. SM Goodman, MJ Raherilalao, S Wohlhauser, pp. 1693–1705. Antananarivo, Madagascar: Association Vahatra.
- Callmender MW, Phillipson PB, Schatz GE, Andriambololona S, Rabarimanarivo M, Rakotonirina N et al. (2011) The endemic and non-endemic vascular flora of Madagascar updated. *Plant Ecology and Evolution* 144: 121–125.
- Campagnaro T, Trentanovi G, Sitzia T (2018) Identifying habitat type conservation priorities under the Habitats Directive: application to two Italian biogeographical regions. *Sustainability* 10: 1189.
- Di Minin E, Soutullo A, Bartesaghi L, Rios M, Szephegyi MN, Moilanen A (2017) Integrating biodiversity, ecosystem services and socio-economic data to identify priority areas and landowners for conservation actions at the national scale. *Biological Conservation* 206: 56–64.
- Dwork C, Kumar R, Naor M, Sivakumar D. (2001) Rank aggregation methods for the Web. In: *Proceedings of the 10th International Conference on World Wide Web*, pp. 613–622. New York, NY, USA: Association for Computing Machinery.
- Echols A, Front A, Cummins J (2019) Broadening conservation funding. *Wildlife Society Bulletin* 43: 372–381.
- Gardner CJ (2011) IUCN management categories fail to represent new, multiple-use protected areas in Madagascar. *Oryx* 45: 336–346.
- Gardner CJ, Nicoll ME, Birkinshaw C, Harris A, Lewis RE, Rakotomalala D, Ratsifandrihamanana AN (2018) The rapid expansion of Madagascar's protected area system. *Biological Conservation* 220: 29–36.
- Gardner CJ, Nicoll ME, Mbohoahy T, Oleson KLL, Ratsifandrihamanana AN, Ratsirarson J et al. (2013) Protected areas for conservation and poverty alleviation: experiences from Madagascar. *Journal of Applied Ecology* 50: 1289–1294.
- Gardner CJ, Raxworthy CJ, Metcalfe K, Raselimanana AP, Smith RJ, Davies ZG (2015) Comparing methods for prioritising protected areas for investment: a case study using Madagascar's dry forest reptiles. *PLoS ONE* 10: e0132803.
- Gautier L, Tahinarivony JA, Ranirison P, Wohlhauser S (2018) Vegetation. In: *The Terrestrial Protected Areas of Madagascar: Their History, Description, and Biota*, eds. SM Goodman, MJ Raherilalao, S Wohlhauser, pp. 207–242. Antananarivo, Madagascar: Association Vahatra.
- Gerber LR, Runge MC, Maloney RF, Iacona GD, Drew CA, Avery-Gomm S et al. (2018) Endangered species recovery: a resource allocation problem. *Science* 362: 284–286.
- Goodman SM, Benstead JP (2004) *The Natural History of Madagascar*. Chicago, IL, USA: University of Chicago Press.
- Goodman SM, Raherilalao MJ, Wohlhauser S (2018) *The Terrestrial Protected Areas of Madagascar: Their History, Description, and Biota*. Antananarivo, Madagascar: Association Vahatra.
- Herrera JP (2017) Prioritizing protected areas in Madagascar for lemur diversity using a multidimensional perspective. *Biological Conservation* 207: 1–8.
- Hochkirch A, Schmitt T, Beninde J, Hiery M, Kinitz T, Kirschev J et al. (2013) Europe needs a new vision for a Natura 2020 Network. *Conservation Letters* 6: 462–467.
- Jones KR, Venter O, Fuller RA, Allan JR, Maxwell SL, Negret PJ, Watson JEM (2018) One-third of global protected land is under intense human pressure. *Science* 360: 788–791.
- Joppa LN, Pfaff A (2009) High and far: biases in the location of protected areas. *PLoS ONE* 4: e8273.
- Keppel G (2014) The importance of expert knowledge in conservation planning – comment to an article by C. J. Klein et al. *Marine Policy* 48: 202–203.
- Klein CJ, Jupiter SD, Watts M, Possingham HP (2014) Evaluating the influence of candidate terrestrial protected areas on coral reef condition in Fiji. *Marine Policy* 44: 360–365.
- Kremen C, Cameron A, Moilanen A, Phillips SJ, Thomas CD, Beentje H et al. (2008) Aligning conservation priorities across taxa in Madagascar with high-resolution planning tools. *Science* 320: 222–226.
- Kukkala AS, Moilanen A (2013) Core concepts of spatial prioritisation in systematic conservation planning. *Biological Reviews* 88: 443–464.
- Kullberg P, Di Minin E, Moilanen A (2019) Using key biodiversity areas to guide effective expansion of the global protected area network. *Global Ecology and Conservation* 20: e00768.
- Langrand O, Roland LR (2018) History of Madagascar's protected areas. In: *The Terrestrial Protected Areas of Madagascar: Their History, Description, and Biota*, eds. SM Goodman, MJ Raherilalao, S Wohlhauser, pp. 79–104. Antananarivo, Madagascar: Association Vahatra.
- Le Saout S, Hoffmann M, Shi Y, Hughes A, Bernard C, Brooks TM et al. (2013) Protected areas and effective biodiversity conservation. *Science* 342: 803–805.
- Lehtomäki J, Moilanen A (2013) Methods and workflow for spatial conservation prioritization using Zonation. *Environmental Modelling & Software* 47: 128–137.
- Lowry II PP, Phillipson PP, Andriamahefari L, Schatz GE, Rajaonary F (2018) Flora. In: *The Terrestrial Protected Areas of Madagascar: Their History, Description, and Biota*, eds. SM Goodman, MJ Raherilalao, S Wohlhauser, pp. 243–255. Antananarivo, Madagascar: Association Vahatra.
- Margules CR, Pressey RL (2000) Systematic conservation planning. *Nature* 405: 243–253.
- Martin TG, Kehoe L, Mantyka-Pringle C, Chades I, Wilson S, Bloom RG et al. (2018) Prioritizing recovery funding to maximize conservation of endangered species. *Conservation Letters* 11: e12604.
- Mitchell A (2005) *The ESRI Guide to GIS Analysis, Volume 2: Spatial Measurements and Statistics*. Redlands, CA, USA: Esri Press.
- Murray JV, Goldizen AW, O'Leary RA, McAlpine CA, Possingham HP, Choy SL (2009) How useful is expert opinion for predicting the distribution of a species within and beyond the region of expertise? A case study using brush-tailed rock-wallabies *Petrogale penicillata*. *Journal of Applied Ecology* 46: 842–851.
- Nolte C, Agrawal A, Barreto P (2013) Setting priorities to avoid deforestation in Amazon protected areas: are we choosing the right indicators? *Environmental Research Letters* 8: 015039.
- Oliver I (2002) An expert panel-based approach to the assessment of vegetation condition within the context of biodiversity conservation: stage 1: the identification of condition indicators. *Ecological Indicators* 2: 223–237.
- Orsi F, Geneletti D, Newton AC (2011) Towards a common set of criteria and indicators to identify forest restoration priorities: an expert panel-based approach. *Ecological Indicators* 11: 337–347.
- R Development Core Team (2019) *R: A Language and Environment for Statistical Computing*. Vienna, Austria: R Foundation for Statistical Computing.
- Rakotoson JR, Razafimahatratra PM (2018) Legal, judiciary, and financial aspects of Madagascar protected areas: past, present, and future. In: *The Terrestrial Protected Areas of Madagascar: Their History, Description, and Biota*, eds. SM Goodman, MJ Raherilalao, S Wohlhauser, pp. 105–168. Antananarivo, Madagascar: Association Vahatra.
- Raxworthy CJ, Nussbaum RA (2000) Extinction and extinction vulnerability of amphibians and reptiles in Madagascar. *Amphibian and Reptile Conservation* 2: 15–23.
- Verhagen W, Kukkala AS, Moilanen A, van Teeffelen AJA, Verburg PH (2017) Use of demand for and spatial flow of ecosystem services to identify priority areas. *Conservation Biology* 31: 860–871.

- Vieilledent G, Grinand C, Rakotomalala FA, Ranaivosoa R, Rakotoarijaona J-R, Allnutt TF, Achard F (2018) Combining global tree cover loss data with historical national forest cover maps to look at six decades of deforestation and forest fragmentation in Madagascar. *Biological Conservation* 222: 189–197.
- Virah-Sawmy M, Gardner C, Ratsifandrihamanana ANA (2014) The Durban Vision in practice: experiences in participatory governance of Madagascar's new protected areas. In: *Conservation and Environmental Management in Madagascar*, ed. IR Scales, pp. 216–252. Oxford, UK and New York, NY, USA: Routledge.
- Watson JEM, Whittaker RJ, Dawson TP (2005) The importance of littoral forest remnants for indigenous bird conservation in southeastern Madagascar. *Biodiversity and Conservation* 14: 523–545.
- Wilkinson NM, Van Duc L (2017) Rank aggregation of local expert knowledge for conservation planning of the critically endangered saola. *Conservation Biology* 31: 625–634.
- Yesuf G, Brown KA, Walford N (2019) Assessing regional-scale variability in deforestation and forest degradation rates in a tropical biodiversity hotspot. *Remote Sensing in Ecology and Conservation* 5: 346–359.