

Pond dyes are Culex mosquito oviposition attractants

Article

Published Version

Creative Commons: Attribution 4.0 (CC-BY)

Open Access

Ortiz Perea, N. and Callaghan, A. ORCID:
<https://orcid.org/0000-0002-2731-3352> (2017) Pond dyes are
Culex mosquito oviposition attractants. PeerJ, 5. e3361. ISSN
2167-8359 doi: <https://doi.org/10.7717/peerj.3361> Available at
<https://centaur.reading.ac.uk/70591/>

It is advisable to refer to the publisher's version if you intend to cite from the work. See [Guidance on citing](#).

Published version at: <http://dx.doi.org/10.7717/peerj.3361>

To link to this article DOI: <http://dx.doi.org/10.7717/peerj.3361>

Publisher: PeerJ Inc

All outputs in CentAUR are protected by Intellectual Property Rights law, including copyright law. Copyright and IPR is retained by the creators or other copyright holders. Terms and conditions for use of this material are defined in the [End User Agreement](#).

www.reading.ac.uk/centaur

CentAUR

Central Archive at the University of Reading

Reading's research outputs online

Pond dyes are *Culex* mosquito oviposition attractants

Natali Ortiz Perea* and Amanda Callaghan*

Ecology and Evolutionary Biology Section, School of Biological Sciences, University of Reading, Reading, United Kingdom

*These authors contributed equally to this work.

ABSTRACT

Background. British mosquito population distribution, abundance, species composition and potential for mosquito disease transmission are intimately linked to the physical environment. The presence of ponds and water storage can significantly increase the density of particular mosquito species in the garden. *Culex pipiens* is the mosquito most commonly found in UK gardens and a potential vector of West Nile Virus WNV, although the current risk of transmission is low. However any factors that significantly change the distribution and population of *C. pipiens* are likely to impact subsequent risk of disease transmission. Pond dyes are used to control algal growth and improve aesthetics of still water reflecting surrounding planting. However, it is well documented that females of some species of mosquito prefer to lay eggs in dark water and/or containers of different colours and we predict that dyed ponds will be attractive to *Culex* mosquitoes.

Methods. Black pond dye was used in oviposition choice tests using wild-caught gravid *C. pipiens*. Larvae from wild-caught *C. pipiens* were also reared in the pond dye to determine whether it had any impact on survival. An emergence trap caught any adults that emerged from the water. Water butts (80 L) were positioned around university glasshouses and woodland and treated with black pond dye or left undyed. Weekly sampling over a six month period through summer and autumn was performed to quantified numbers of larvae and pupae in each treatment and habitat.

Results. Gravid female *Culex* mosquitoes preferred to lay eggs in dyed water. This was highly significant in tests conducted under laboratory conditions and in a semi-field choice test. Despite this, survivorship in black dyed water was significantly reduced compared to undyed water. Seasonal analysis of wild larval and pupal numbers in two habitats with and without dye showed no impact of dye but a significant impact of season and habitat. Mosquitoes were more successful, with significantly higher numbers of pupae, in the habitat where they had vegetation cover and shade.

Discussion. Our study has raised some interesting possibilities; one is that where used, pond dyes may be encouraging mosquitoes to breed in gardens in close proximity to people. Considering the concerns over potential future spread of disease in urban environments, this as well as shading of ponds and water butts, should inform future advice over reducing mosquito breeding and spread.

Submitted 15 February 2017

Accepted 27 April 2017

Published 31 May 2017

Corresponding author
Amanda Callaghan,
a.callaghan@reading.ac.uk

Academic editor
Giovanni Benelli

Additional Information and
Declarations can be found on
page 9

DOI 10.7717/peerj.3361

© Copyright
2017 Ortiz Perea and Callaghan

Distributed under
Creative Commons CC-BY 4.0

OPEN ACCESS

Subjects Ecology, Entomology

Keywords Urban ecology, British mosquito, *Culex pipiens*, Ponds, Oviposition, Pond dye, Behaviour, Disease, Mosquito control, Habitat

INTRODUCTION

West Nile virus (WNV) is a positive-sense RNA virus belonging to the Flaviviridae family and is transmitted by mosquitoes, including *C. pipiens* complex mosquitoes. There have been several major outbreaks of WNV in Europe in recent years, affecting both humans and horses ([Calistri et al., 2010](#); [Di Sabatino et al., 2014](#); [Hernández-Triana et al., 2014](#)). A laboratory test of the vectorial competence of European *C. pipiens*, including the phenotypic and physiological variant *C. molestus*, demonstrated that both the *molestus* form and a hybrid between *C. pipiens* and *C. molestus* were capable of transmitting WNV ([Brustolin et al., 2016](#)). Both of these variants are found in Britain, raising the possibility that outbreaks of human or animal viral diseases could occur in Britain if conditions and climate permitted. Whilst the threat is likely to come from invasive species, more than 30 species of mosquito, including putative vectors of arboviruses, are native to the UK ([Blagrove et al., 2016](#)). To date there is no evidence of mosquito-borne virus transmission of public health concern in the UK ([Blagrove et al., 2016](#)). However, we know that mosquitoes are established in both rural and urban habitats and are often found in gardens ([Townroe & Callaghan, 2014](#)). Understanding and mitigating future threats requires detailed ecological knowledge of the putative vector species and prediction of how mosquito populations are influenced by anthropogenic activity.

In England, 80% of the human population lives in towns and cities which cover more than 7% of the land area ([Wilby & Perry, 2006](#)). Urbanisation changes the physical environment in a way which is known to alter habitat types, species numbers and the community composition of ecosystems ([McKinney, 2006](#); [Sala et al., 2000](#)). These changes are likely to impact British mosquito populations and influence distributions, abundances, species composition, mosquito-host interactions, biting nuisance and the potential for mosquito borne disease to occur in the UK.

Gardens make up a large proportion of the urban area and provide a significant contribution to the green spaces within many UK cities providing areas of ecological value which may support diverse wildlife populations including mosquitoes ([Smith et al., 2005](#)). The creation of ponds is encouraged as a means of enhancing the biodiversity value of gardens, particularly in the face of a widespread decline of ponds in the wider rural landscape ([Gaston et al., 2005](#)). Although individually small ($\sim 2.5 \text{ m}^2$) and fragmented into small patches, urban ponds are distributed widely across the urban landscape and are likely to contain water all year round ([Gaston et al., 2005](#)). Where fish are not present, they are likely to provide a valuable breeding site for mosquitoes. Water butts also provide an ideal habitat for mosquitoes with a recent study recording five British mosquito species; *Anopheles claviger*, *An. plumbeus*, *Culex annulata*, *C. pipiens* and *C. torrentium* ([Townroe & Callaghan, 2014](#)). Predicted future changes to the climate, with increased summer temperatures and more frequent heavy rainfall in winter, will continue to place pressure on water supplies and encourage domestic water storage ([Snow & Medlock, 2006](#)). This in turn is likely to increase populations of the most common species, *C. pipiens*, particularly in urban gardens.

C. pipiens is a potential enzootic (primary) vector of West Nile Virus—WNV ([Medlock & Leach, 2015](#)) and the species most likely to be directly affected by changes in water storage and pond formation ([Townroe & Callaghan, 2014](#)). The current risk of WNV transmission in the UK is considered low because the abundance of enzootic and bridge (non-primary) vectors is too low for sustained transmission ([Medlock & Leach, 2015](#)). Changes in climate, migration of mosquito species and longer flight seasons in dense urban areas creates conditions more conducive to high levels of human host biting and an increased risk of disease transmission. Therefore, any factors that significantly change the distribution and population of *C. pipiens* are likely to impact subsequent risk of disease transmission.

Pond dyes are a relatively new cosmetic product for garden ponds and lakes. They have proved to be popular at recent high profile garden shows such as Chelsea and Hampton Court. They stop the growth of algae by blocking the red end of the visible light spectrum (of wavelength 620–740 nm) from penetrating the water. The red end of the light spectrum is needed for photosynthesis, as peak absorption for photosynthetic pigments is approximately 650 nm ([Douglas, Raven & Larkum, 2003](#)). Although there is no evidence to suggest that these dyes are toxic to fish and invertebrates, the impact on invertebrate communities may well be behavioural. In this study, we investigate the impact that pond dyes have on oviposition and survival in *C. pipiens* mosquitoes. Previous studies have shown that the cues for oviposition are often visual and have demonstrated a preference for oviposition in dark containers and dark waters ([Beckel, 1955](#); [Collins & Blackwell, 2000](#); [Hilburn, Willis & Seawright, 1983](#); [Hoel et al., 2011](#); [Panigrahi et al., 2014](#)). We therefore predict that pond dyes will act as an attractant for mosquito oviposition, with a potential impact to increase mosquito population densities in garden ponds. This is the first study to specifically look at pond dyes to see if they impact on mosquito breeding behaviour and success.

MATERIALS AND METHODS

Trapping wild gravid female mosquitoes

Wild gravid female Culicine mosquitoes were trapped using modified oviposition traps ([Reiter, 1987](#); [Townroe & Callaghan, 2015](#)). A total of 10 traps were placed on the Whiteknights campus at the University of Reading, Berkshire, England (51.4419°N, 0.9456°W). Approximately 1,000 gravid female mosquitoes were caught in July and August 2014 and 2015. Most of the mosquitoes sampled belonged to the *Culex* genus although a few *Anopheles plumbeus* (<5) and *Culiseta annulata* (<5) were also trapped.

Oviposition preferences of wild mosquitoes

An oviposition choice experiment was performed by releasing 200 of the trapped gravid mosquitoes into a tent (245 × 145 × 95 cm) placed outdoors on campus (51.4419°N, 0.9456°W). Mosquitoes were allowed to freely oviposit in one of 14 2 L plastic containers placed randomly in the tent: seven with 1.2 L tap water and seven with 1.2 L tap water treated with pond dye at the concentrations recommended by the manufacturer (Dyofix, Leeds, UK). After seven days, the containers were taken to the laboratory to count egg

batches laid in each container. The experiment was performed three times with freshly trapped females and a choice between tap water and black colour dye.

The choice experiment was repeated with wild-caught gravid females under laboratory conditions (25 °C, 16:8 light:dark). Five groups of 20 gravid females were chosen randomly and each group transferred into a cotton net cage 25 × 25 × 25 cm per treatment set. In each cage, two 200 ml plastic bowls were filled with 150 ml of either tap water or dye water. The choice experiments were repeated in normal rearing conditions (16:8 light:dark) and also in the absence of light (black bags were used as a cover in each cage during the experiment).

Emergence study

A modified emergence trap ([Hamer et al., 2011](#)) was used to measure the impact dye had on mosquito survival. Eggs from the oviposition experiment were hatched in the laboratory (25 °C, 16:8 L:D) and reared in tap water through to 2nd instar, fed with pelleted rabbit food. One hundred were then transferred to each of 18 11 L plastic bins (23 × 28 cm) containing 10L tap water or 10L tap water and dye (Dyofix, Leeds, UK). Food was added to each bin (1.2 g guinea pig food) which was capped with a conical fabric mesh to trap emerging adults. The bins were placed outdoors in the area used to trap the females.

Traps were monitored daily for emerging adult mosquitoes. These were captured using a manual aspirator, transferred into small tubes and stored at −20 °C for identification ([Snow, 1990](#)).

Wild population numbers in dye treated and untreated artificial containers

Thirty two 80 L water butts (44.5 cm × 58.5 cm, [Townroe & Callaghan, 2014](#)) were placed around the secure area behind the School of Biological Sciences Harborne building on Whiteknights campus in the summer of 2014. Each container was filled with 60 L of tap water and 8 g of ground oak leaves. Bins were placed in pairs with the second bin additionally containing black pond dye added according to manufacturers instructions (DyoFix, Leeds, UK). For each treatment, eight replicates were organized in each habitat: woodland (51°26'12.8" N; 0°56'39.7" W) and glasshouses (51°26'13.2" N; 0°56'31.2" W). Bins pairs were several metres apart. Containers were sampled weekly for 26 weeks in 2014. Sampling was carried out using a device adapted from [Onyeka \(1980\)](#) and [Townroe & Callaghan \(2014\)](#). The device included three sections of drain pipe (4 cm high, 0.4 cm thick and 8 cm diameter) bolted together in line with fine mesh net glued to the bottom of each ring and a flexible wire handle attached to the outer edge of the furthest two rings. The device was lowered into the container and allowed to rest on the bottom for 5 min before being drawn swiftly up through the water to collect animals. This method was carried out once per container per sampling event. The number of larvae and pupae collected were recorded and larvae were replaced in the container. All pupae were taken to the laboratory for rearing to adult then frozen at −22 °C. Adults were identified using a 10–40× magnification microscope using the key of [Cranston et al., \(1987\)](#).

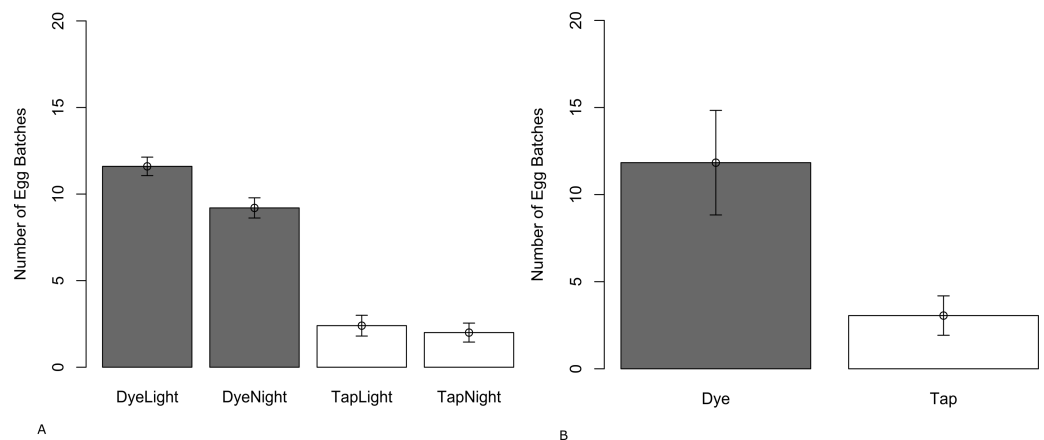


Figure 1 Mean number of egg batches (\pm SE) laid by wild-caught *C. pipiens* in paired choice tests in (A) the laboratory with a 16:8 Light/Dark plus or minus a blackout cover and (B) semi-field conditions (tent).

Statistics

All statistical analyses were performed using R version 3.2.2 (*R Core Team, 2015*). Data were tested for normality using a Shapiro–Wilk normality test. Where data were normally distributed, parametric statistics were used and oviposition data were analysed using a paired *t*-test and one-way analysis of variance (ANOVA). Oviposition in the tent was not normally distributed and a nonparametric Mann–Whitney *U*-test was performed. Differences in adult emergence between treatments were analysed using a generalised linear model binomial test. Abundance data in water butts were Log ($x + 1$) transformed and the relationship between mosquito abundance, treatment and location was analysed using 2 way repeated measures ANOVA.

RESULTS

Mosquito oviposition selection in laboratory conditions and oviposition selection in the tent

In the laboratory experiment, wild gravid females laid significantly more egg rafts in dye water compared with tap water ($t = 5.4928$; $df = 8$; $P < 0.001$) (Fig. 1A). Similar results were observed in the tent; wild gravid females laid significantly more egg rafts in the dye water compared to the tap water ($W = 250$; $P < 0.001$) (Fig. 1B). Females laid significantly fewer eggs in the dye treatment when there was a reduction in light ($t = 3.0358$; $df = 8$; $P = 0.016$). Light had no significant effect on numbers of eggs laid in tap water ($t = 0.49237$; $df = 8$; $P = 0.6357$). Even though females laid fewer eggs when light was reduced, they still preferred to lay in dye water rather than tap water ($t = 9$; $df = 8$; $P \leq 0.001$).

Wild population numbers in dye treated and untreated artificial containers

Larval and pupal numbers were analysed by season; summer (June–August) and Autumn (September–November), treatment and habitat (Fig. 2). No significant differences were observed in larval or pupal densities between dye and tap water in the summer (larval

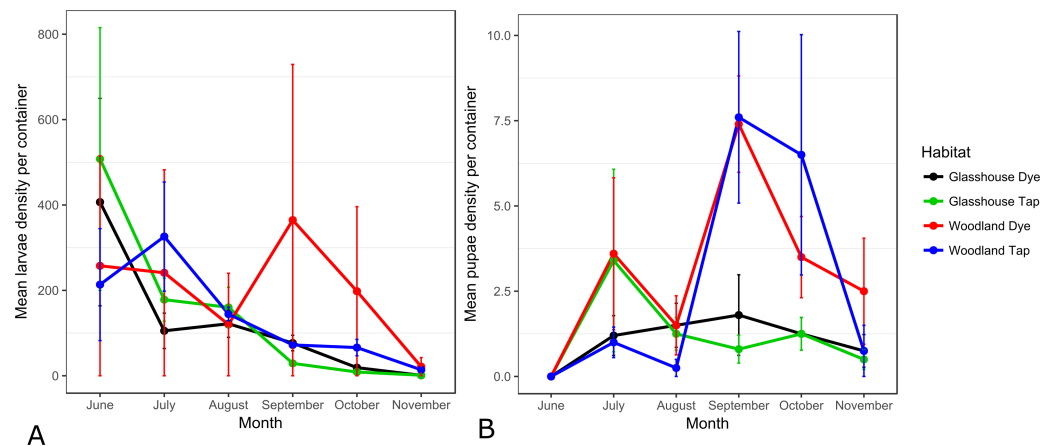


Figure 2 Mean (\pm SEM) number of *C. pipiens* larvae (A) and pupae (B) sampled in dye and tap water in woodland and glasshouse habitats.

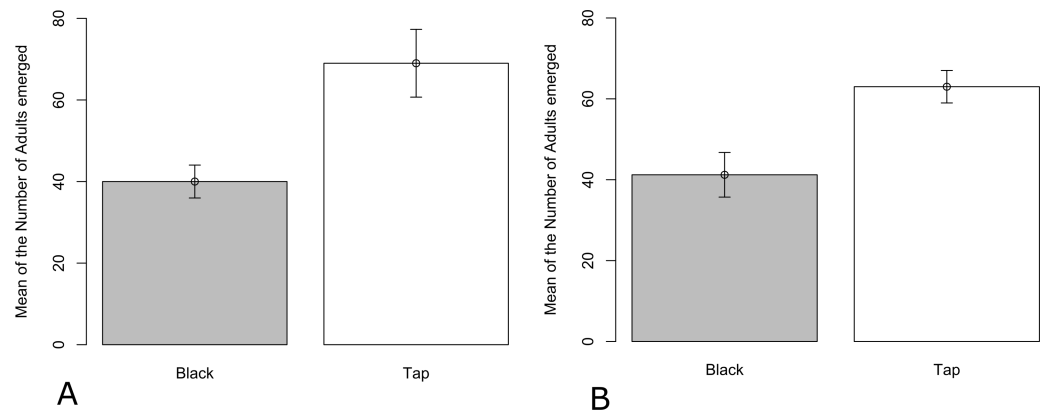


Figure 3 Mean number (\pm SEM) of *C. pipiens* adults emerging from bins containing tap water or tap water and dye in (A) Summer and (B) Autumn.

$F_{124} = 0.062$; $p = 0.8048$; pupal $F_{124} = 0.034$; $p = 0.856$) or in the autumn (larval $F_{124} = 0.162$; $p = 0.691$; pupal $F_{124} = 0.002$; $p = 0.962$). Habitat impacted on larval numbers, with higher numbers in the glasshouse in the summer ($F_{124} = 4.488$; $p = 0.045$) and higher numbers of pupae in the woodland in the autumn ($F_{124} = 4.240$; $p = 0.049$). However, there were no habitat differences in larval densities in the autumn ($F_{124} = 0.130$; $p = 0.722$) or in pupal densities in the summer ($F_{124} = 0.002$; $p = 0.969$).

Emergence study: field conditions

The total number of adults emerging from different treatments varied significantly in both summer ($Z = -11.800$, $P < 0.001$) and autumn ($Z = -9.172$; $P < 0.001$) (Fig. 3). In each season, fewer adults emerged from the black dye.

DISCUSSION

Urban garden ponds represent an abundant and reliable network of aquatic resources within which juvenile mosquitoes may develop and adults move across the landscape. Adding pond dyes might influence the attractiveness of ponds as breeding sites to mosquitoes. This is important since the exploitation of human domestic habitats has facilitated mosquito-borne human disease outbreaks in other parts of the world, such as the WNV outbreaks in North America (Patz *et al.*, 2004).

It was not unexpected to find that *C. pipiens* females prefer to lay eggs in water with the black dye. It is well known that female mosquitoes have preferences for oviposition in containers of different colours and previous studies have demonstrated oviposition choice in dyed water although no work has been undertaken on pond dyes (Collins & Blackwell, 2000; Li *et al.*, 2009; Oliva, Correia & Albuquerque, 2014; Beehler & DeFoliart, 1990; Beehler, Millar & Mulla, 1993; Isoe *et al.*, 1995). A possible explanation for this is that mosquitoes choose to oviposit in dark containers as it indicates depth and therefore a lower threat of desiccation before juveniles develop. It might also indicate a higher concentration of organic matter providing nutrition (Hoel *et al.*, 2011; Williams, 1962). Another suggestion is that the dark water mimics shading of the water body (Vezzani *et al.*, 2005).

Visual cues seem to have some importance. Covering the adult cages with black plastic in the laboratory oviposition experiment significantly reduced oviposition in black dye containers, although oviposition remained significantly higher than in the control suggesting that either some light was leaking in or that other factors were in play.

Although the black dye was an oviposition attractant, it had a significant negative impact on the survival of mosquitoes through to adults. Adult mosquitoes still emerged from the dye-treated water but the breeding success of the female was almost halved by the low survivorship. The results of the breeding experiment were repeated with the same significant reduction in emergence in dyed water. Laboratory tests have found no evidence of acute toxicity of dyes to *Culex* larvae over 48 h that would explain this result. The poor survival of mosquitoes is therefore unlikely to be related to dye toxicity. It is also unrelated to the algal-killing property of the dye. If mosquitoes were in a natural environment where algae were a significant part of their diet, we might hypothesise that dye would impact survival by killing the algae. However in this artificial system larvae were given a supply of food and no algae were present in either treatment.

It is well known that mosquito larvae and pupae dive in the water column in response to threat, relying on visual or mechanical cues (Awasthi, Wu & Hwang, 2012). This requires considerable amounts of energy and constant or deep diving is associated with increased mortality (Lucas *et al.*, 2001). It is pure speculation to suggest that the dye changes the behaviour of *C. pipiens* but in fourth-instar *Anopheles gambiae* growing in murky water columns deep diving increased significantly compared to clear water columns (Tuno *et al.*, 2004).

Monitoring of wild population numbers in dye treated and untreated artificial containers were undertaken in two habitat types. The greenhouse habitat represented one in full sun where undyed water would reflect light presenting a large contrast between water treatments

and the woodland habitat would have potentially less of a contrast since there was a lower light level.

Habitat type was found to be far more important than dye in determining the number of larvae and pupae, with the darker woodland habitat producing significantly more pupae compared to those in the brighter greenhouse area and the greenhouse habitat producing significantly more larvae. There is little information on the impact of shade on British mosquitoes but this result agrees with that of [Fischer & Schweigmann \(2004\)](#), who found that seasonal patterns of abundance of *C. pipiens* in urban Argentina showed positive relationships with vegetation cover. A further study on container breeding mosquitoes in an Argentinian cemetery found that the numbers of both *C. pipiens* and *Aedes aegypti* immatures were higher in shaded containers than in containers in full sun ([Vezzani & Albicocco, 2009](#); [Vezzani et al., 2005](#)). Clearly it is likely that temperatures were higher in Argentina and shaded, cooler, containers have higher adult mosquito production rates because of a negative effect of high temperatures ([Vezzani et al., 2005](#)). In our study the greenhouse habitat produced significantly more larvae, although this did not translate into more pupae, possibly indicating larval mortality.

The fact that pond dye treatment had no impact on wild mosquito numbers can be explained by two possibilities. One is a balancing of oviposition preference against survival. If more eggs are laid and yet fewer mosquitoes emerge because of the dye, the net effect could well be neutral in terms of numbers of mosquitoes produced by the habitat. The second is that although pond dye is an important factor for *Culex* female oviposition in artificial environments, there are many factors in play that will influence the success of mosquitoes in a natural habitat, including temperature and shading.

We undertook the wild population experiment using water butts rather than ponds for two reasons. The first was to limit the number of factors that might interfere with the experiment such as competing mosquito species and predators to allow us to determine whether dye was an important factor in mosquito breeding success in a more natural setting. The second is that water butts are an important urban habitat for *C. pipiens* mosquitoes and an estimated 60% of UK garden water butts are colonised ([Townroe & Callaghan, 2014](#)). Our results demonstrate that the dyes do influence both mosquito behaviour and survival but there is no evidence that this translates into a significant difference in mosquito numbers.

Populations of *C. pipiens* are expected to increase with future changes to the landscape and climate, and it has been suggested that towns and cities represent some of the highest risk areas for potential transmission of bird-related mosquito-borne disease ([Snow & Medlock, 2006](#)). The ornithophilic habit of *C. pipiens* limits its potential as a bridge vector but seasonal abundance and other eco-behavioural characteristics predispose this species to serve as a potential enzootic vector of WNV, capable of maintaining cycles among bird populations, in the UK ([Medlock, Snow & Leach, 2005](#)). It is important to understand environmental factors that might impact on mosquito population success in urban habitats, particularly if these factors are anthropological in nature.

ACKNOWLEDGEMENTS

Thanks to Rebecca Gander and Oliver Abbey for help in data gathering.

ADDITIONAL INFORMATION AND DECLARATIONS

Funding

Dyofix provided the dyes but had no part in any aspect of the research design, aim, analysis or conclusion. This research was funded by a scholarship to Natali Ortiz-Perea from Colciencias: Department of Science, Technology and Innovation. The funders had no role in study design, data collection and analysis, decision to publish, or preparation of the manuscript.

Grant Disclosures

The following grant information was disclosed by the authors:
Colciencias: Department of Science, Technology and Innovation.

Competing Interests

The authors declare there are no competing interests.

Author Contributions

- Natali Ortiz Perea conceived and designed the experiments, performed the experiments, analyzed the data, wrote the paper, prepared figures and/or tables, reviewed drafts of the paper.
- Amanda Callaghan conceived and designed the experiments, contributed reagents/materials/analysis tools, wrote the paper, reviewed drafts of the paper.

Data Availability

The following information was supplied regarding data availability:
The raw data has been supplied as a [Supplementary File](#).

Supplemental Information

Supplemental information for this article can be found online at <http://dx.doi.org/10.7717/peerj.3361#supplemental-information>.

REFERENCES

- Awasthi AK, Wu C-H, Hwang J-S. 2012.** Diving as an anti-predator behavior in mosquito pupae. *Zoological Studies* **51**:1225–1234.
- Beckel W. 1955.** Oviposition site preference of *Aedes* mosquitoes (Culicidae) in the laboratory. *Mosquito News* **15**:224–228.
- Beehler J, DeFoliart G. 1990.** Spatial distribution of *Aedes triseriatus* eggs in a site endemic for La Crosse encephalitis virus. *Journal of the American Mosquito Control Association* **6**:254–257.

- Beehler J, Millar J, Mulla M. 1993.** Synergism between chemical attractants and visual cues influencing oviposition of the mosquito, *Culex quinquefasciatus* (Diptera: Culicidae). *Journal of Chemical Ecology* 19:635–644 DOI 10.1007/BF00984998.
- Blagrove MS, Sherlock K, Chapman GE, Impoinvil DE, McCall PJ, Medlock JM, Lycett G, Solomon T, Baylis M. 2016.** Evaluation of the vector competence of a native UK mosquito *Ochlerotatus detritus* (*Aedes detritus*) for dengue, chikungunya and West Nile viruses. *Parasit Vectors* 9:452 DOI 10.1186/s13071-016-1739-3.
- Brustolin M, Talavera S, Santamaría C, Rivas R, Pujol N, Aranda C, Marquès E, Valle M, Verdún M, Busquets N. 2016.** *Culex pipiens* and *Stegomyia albopicta* (= *Aedes albopictus*) populations as vectors for lineage 1 and 2 West Nile virus in Europe. *Medical and Veterinary Entomology* 30:166–173 DOI 10.1111/mve.12164.
- Calistri P, Giovannini A, Hubalek Z, Ionescu A, Monaco F, Savini G, Lelli R. 2010.** Epidemiology of West Nile in Europe and in the Mediterranean basin. *The Open Virology Journal* 4:29–37.
- Collins LE, Blackwell A. 2000.** Colour cues for oviposition behaviour in *Toxorhynchites moctezuma* and *Toxorhynchites mboinensis* mosquitoes. *Journal of Vector Ecology* 25:127–135.
- Cranston PS, Ramsdale CD, Snow KR, White GB. 1987.** Adults, larvae and pupae of British Mosquitos (Culicidae)—a key. In: *Scientific publication* 48. Far Sawrey: Freshwater Biological Association, 152 pp.
- Di Sabatino D, Bruno R, Sauro F, Danzetta ML, Cito F, Iannetti S, Narcisi V, De Massis F, Calistri P. 2014.** Epidemiology of West Nile disease in Europe and in the Mediterranean Basin from 2009 to 2013. *BioMed Research International* 2014:907852 DOI 10.1155/2014/907852.
- Douglas SE, Raven JA, Larkum AW. 2003.** The algae and their general characteristics. In: Larkum AWD, Douglas SE, Raven JA, eds. *Advances in photosynthesis and respiration*. Dordrecht: Springer, 1–10.
- Fischer S, Schweigmann N. 2004.** *Culex* mosquitoes in temporary urban rain pools: seasonal dynamics and relation to environmental variables. *Journal of Vector Ecology* 29:365–373.
- Gaston KJ, Warren PH, Thompson K, Smith RM. 2005.** Urban domestic gardens (IV): the extent of the resource and its associated features. *Biodiversity & Conservation* 14:3327–3349 DOI 10.1007/s10531-004-9513-9.
- Hamer GL, Kelly PH, Focks DA, Goldberg TL, Walker ED. 2011.** Evaluation of a novel emergence trap to study *Culex* mosquitoes in urban catch basins. *Journal of the American Mosquito Control Association* 27:142–147 DOI 10.2987/10-6090.1.
- Hernández-Triana LM, Jeffries CL, Mansfield KL, Carnell G, Fooks AR, Johnson N. 2014.** Emergence of West Nile virus lineage 2 in Europe: a review on the introduction and spread of a mosquito-borne. *Frontiers in Public Health* 2:271 DOI 10.3389/fpubh.2014.00271.
- Hilburn L, Willis N, Seawright J. 1983.** An analysis of preference in the color of oviposition sites exhibited by female *Toxorhynchites rutilus* in the laboratory. *Mosquito News* 43:302–306.

- Hoel DF, Obenauer PJ, Clark M, Smith R, Hughes TH, Larson RT, Diclaro JW, Allan SA. 2011. Efficacy of ovitrap colors and patterns for attracting aedes albopictus at suburban field sites in North-Central Florida 1. *Journal of the American Mosquito Control Association* 27:245–251 DOI 10.2987/11-6121.1.
- Isoe J, Beehler J, Millar J, Mulla M. 1995. Oviposition responses of *Culex tarsalis* and *Culex quinquefasciatus* to aged Bermuda grass infusions. *Journal of the American Mosquito Control Association* 11:39–44.
- Li J, Deng T, Li H, Chen L, Mo J. 2009. Effects of water color and chemical compounds on the oviposition behavior of gravid *Culex pipiens pallens* females under laboratory conditions. *Journal of Agricultural and Urban Entomology* 26:23–30 DOI 10.3954/1523-5475-26.1.23.
- Lucas Jr EA, Romoser WS. 2001. The energetic costs of diving in *Aedes aegypti* and *Aedes albopictus* pupae. *Journal of the American Mosquito Control Association* 17(1):56–60.
- McKinney ML. 2006. Urbanization as a major cause of biotic homogenization. *Biological Conservation* 127:247–260 DOI 10.1016/j.biocon.2005.09.005.
- Medlock JM, Leach SA. 2015. Effect of climate change on vector-borne disease risk in the UK. *The Lancet Infectious Diseases* 15:721–730 DOI 10.1016/S1473-3099(15)70091-5.
- Medlock JM, Snow KR, Leach S. 2005. Potential transmission of West Nile virus in the British Isles: an ecological review of candidate mosquito bridge vectors. *Medical and Veterinary Entomology* 19:2–21 DOI 10.1111/j.0269-283X.2005.00547.x.
- Oliva L, Correia J, Albuquerque C. 2014. How mosquito age and the type and color of oviposition sites modify skip-oviposition behavior in aedes aegypti (Diptera: Culicidae)? *Journal of Insect Behavior* 27:81–91 DOI 10.1007/s10905-013-9407-3.
- Onyeka JOA. 1980. Studies on the ecology and biology of *Culex pipiens* L. and *Culex torrentium* Martini (Diptera: Culicidae) in Britain. PhD thesis, University of London.
- Panigrahi SK, Barik TK, Mohanty S, Tripathy NK. 2014. Laboratory evaluation of oviposition behavior of field collected *Aedes* mosquitoes. *Journal of Insects* 2014:207489.
- Patz JA, Daszak P, Tabor GM, Aguirre AA, Pearl M, Epstein J, Wolfe ND, Kilpatrick AM, Fofopoulos J, Molyneux D, Bradley DJ. 2004. Unhealthy landscapes: policy recommendations on land use change and infectious disease emergence. *Environmental Health Perspectives* 112:1092–1098 DOI 10.1289/ehp.6877.
- R Core Team. 2015. A language and environment for statistical computing. Vienna: R Foundation for Statistical Computing. Available at <http://www.R-project.org/>.
- Reiter P. 1987. A revised version of the CDC gravid mosquito trap. *Journal of the American Mosquito Control Association* 3:325–327.
- Sala OE, Chapin FS, Armesto JJ, Berlow E, Bloomfield J, Dirzo R, Huber-Sanwald E, Huenneke LF, Jackson RB, Kinzig A, Leemans R, Lodge DM, Mooney HA, Oosterheld M, Poff NL, Sykes MT, Walker BH, Walker M, Wall DH. 2000. Global biodiversity scenarios for the year 2100. *Science of the Total Environment* 287:1770–1774 DOI 10.1126/science.287.5459.1770.

- Smith RM, Gaston KJ, Warren PH, Thompson K. 2005.** Urban domestic gardens (V): relationships between landcover composition, housing and landscape. *Landscape Ecology* **20**:235–253 DOI [10.1007/s10980-004-3160-0](https://doi.org/10.1007/s10980-004-3160-0).
- Snow KR. 1990.** *Mosquitoes*. Slough: Richmond Publishing Co. Ltd.
- Snow K, Medlock J. 2006.** The potential impact of climate change on the distribution and prevalence of mosquitoes in Britain. *Journal of the European Mosquito Control Association* **21**:1–10.
- Townroe S, Callaghan A. 2014.** British container breeding mosquitoes: the impact of urbanisation and climate change on community composition and phenology. *PLOS ONE* **9**:e95325 DOI [10.1371/journal.pone.0095325](https://doi.org/10.1371/journal.pone.0095325).
- Townroe S, Callaghan A. 2015.** Morphological and fecundity traits of *Culex* mosquitoes caught in gravid traps in urban and rural Berkshire, UK. *Bulletin of Entomological Research* **105**:615–620 DOI [10.1017/S000748531500053X](https://doi.org/10.1017/S000748531500053X).
- Tuno N, Miki K, Minakawa N, Githeko A, Yan G, Takagi M. 2004.** Diving ability of *Anopheles gambiae* (Diptera: Culicidae) larvae. *Journal of Medical Entomology* **41**:810–812 DOI [10.1603/0022-2585-41.4.810](https://doi.org/10.1603/0022-2585-41.4.810).
- Vezzani D, Albicocco A. 2009.** The effect of shade on the container index and pupal productivity of the mosquitoes *Aedes aegypti* and *Culex pipiens* breeding in artificial containers. *Medical and Veterinary Entomology* **23**:78–84 DOI [10.1111/j.1365-2915.2008.00783.x](https://doi.org/10.1111/j.1365-2915.2008.00783.x).
- Vezzani D, Rubio A, Velazquez S, Schweigmann N, Wieg T. 2005.** Detailed assessment of microhabitat suitability for *Aedes aegypti* (Diptera: Culicidae) in Buenos Aires, Argentina. *Acta Tropica* **95**:123–131 DOI [10.1016/j.actatropica.2005.03.010](https://doi.org/10.1016/j.actatropica.2005.03.010).
- Wilby RL, Perry GL. 2006.** Climate change, biodiversity and the urban environment: a critical review based on London, UK. *Progress in Physical Geography* **30**:73–98 DOI [10.1191/0309133306pp470ra](https://doi.org/10.1191/0309133306pp470ra).
- Williams RE. 1962.** Effect of coloring oviposition media with regard to the mosquito *Aedes triseriatus* (Say). *The Journal of Parasitology* **48**:919–925.