

Evaluation of urban local-scale aerodynamic parameters: implications for the vertical profile of wind speed and for source areas

Article

Published Version

Creative Commons: Attribution 4.0 (CC-BY)

Open Access

Kent, C. W., Grimmond, S. ORCID: <https://orcid.org/0000-0002-3166-9415>, Barlow, J., Gatey, D., Kotthaus, S., Lindberg, F. and Halios, C. H. ORCID: <https://orcid.org/0000-0001-8301-8449> (2017) Evaluation of urban local-scale aerodynamic parameters: implications for the vertical profile of wind speed and for source areas. *Boundary-Layer Meteorology*, 164 (2). pp. 183-213. ISSN 0006-8314 doi: <https://doi.org/10.1007/s10546-017-0248-z> Available at <https://centaur.reading.ac.uk/69708/>

It is advisable to refer to the publisher's version if you intend to cite from the work. See [Guidance on citing](#).

To link to this article DOI: <http://dx.doi.org/10.1007/s10546-017-0248-z>

Publisher: Springer

All outputs in CentAUR are protected by Intellectual Property Rights law, including copyright law. Copyright and IPR is retained by the creators or other copyright holders. Terms and conditions for use of this material are defined in

the [End User Agreement](#).

www.reading.ac.uk/centaur

CentAUR

Central Archive at the University of Reading

Reading's research outputs online

Evaluation of Urban Local-Scale Aerodynamic Parameters: Implications for the Vertical Profile of Wind Speed and for Source Areas

Christoph W. Kent¹  · Sue Grimmond¹  · Janet Barlow¹ · David Gatey² · Simone Kotthaus¹  · Fredrik Lindberg³ · Christos H. Halios¹ 

Received: 2 August 2016 / Accepted: 16 March 2017 / Published online: 28 April 2017
© The Author(s) 2017. This article is an open access publication

Abstract Nine methods to determine local-scale aerodynamic roughness length (z_0) and zero-plane displacement (z_d) are compared at three sites (within 60 m of each other) in London, UK. Methods include three anemometric (single-level high frequency observations), six morphometric (surface geometry) and one reference-based approach (look-up tables). A footprint model is used with the morphometric methods in an iterative procedure. The results are insensitive to the initial z_d and z_0 estimates. Across the three sites, z_d varies between 5 and 45 m depending upon the method used. Morphometric methods that incorporate roughness-element height variability agree better with anemometric methods, indicating z_d is consistently greater than the local mean building height. Depending upon method and wind direction, z_0 varies between 0.1 and 5 m with morphometric z_0 consistently being 2–3 m larger than the anemometric z_0 . No morphometric method consistently resembles the anemometric methods. Wind-speed profiles observed with Doppler lidar provide additional data with which to assess the methods. Locally determined roughness parameters are used to extrapolate wind-speed profiles to a height roughly 200 m above the canopy. Wind-speed profiles extrapolated based on morphometric methods that account for roughness-element height variability are most similar to observations. The extent of the modelled source area for measurements varies by up to a factor of three, depending upon the morphometric method used to determine z_d and z_0 .

Keywords Aerodynamic roughness length · Anemometric methods · Logarithmic wind-speed profile · Morphometric methods · Source area · Zero-plane displacement

✉ Christoph W. Kent
C.W.Kent@pgr.reading.ac.uk

✉ Sue Grimmond
c.s.grimmond@reading.ac.uk

¹ Department of Meteorology, Reading University, RG6 6UR Reading, UK

² Risk Management Solutions, EC3R 8NB London, UK

³ Department of Earth Sciences, University of Gothenburg, 405 30 Gothenburg, Sweden

1 Introduction

The urban environment is arguably the most critical interface between humans and the atmosphere. Considerable progress has been made in understanding and modelling the urban environment across a broad spectrum of topics (e.g. Roth 2000; Arnfield 2003; Stewart 2011; Tominaga and Stathopoulos 2013). Wind speed is critical to the vertical and horizontal exchange of scalars and pollutants, and is important when considering, for example, the construction and insurance of buildings (Walker et al. 2016), pedestrian comfort (Stathopoulos 2006) and renewable energy (Drew et al. 2013). The world's urban population is expected to increase to 66% by 2050 (UN 2014), and as cities grow outwards and more importantly upwards, larger populations become more exposed to urban wind regimes. Therefore, improved knowledge of urban flow effects is vital to the development of cities.

The prospect of an equilibrium boundary-layer wind-speed profile, represented using just a few parameters, is appealing, especially above a rough urban surface with complex flow across numerous length and time scales (Bitter and Hanna 2003). Several relationships to describe the spatially- and temporally-averaged wind-speed profile above a surface exist, such as the power-law profile (Sedefian 1980), the logarithmic profile (Tennekes 1973) and profiles described by Deaves and Harris (1978), Emeis et al. (2007), Gryning et al. (2007) and Peña et al. (2010). A precursor to the use of each method is representation of the zero-plane displacement (z_d) and the aerodynamic roughness length (z_0).

Although the magnitude of both z_d and z_0 is fundamentally related to surface morphology, assigning appropriate values remains challenging. This is particularly true in city centres, with pronounced variability in roughness-element heights and density, creating unique, complex surface morphology. Individual tall buildings often rise above mid-rise buildings, whilst in the suburbs more homogeneous roughness-element height and density are common.

The numerous methods used to determine z_d and z_0 can be grouped into three classes: (i) reference-based, (ii) anemometric and (iii) morphometric. The reference-based method is the simplest, as a neighbourhood is compared to published tables or figures (e.g. Grimmond and Oke 1999; Wieringa et al. 2001; Stewart and Oke 2012) to determine appropriate values. Anemometric and morphometric methods both directly incorporate the unique surface morphology of an area and can account for variations in meteorological conditions (e.g. wind direction, wind speed or stability).

In the present study, high-quality databases are used to compare methods to determine z_d and z_0 in urban areas. For the study area (central London, UK) the methods employed are: reference-based using aerial photography, anemometric using single- and multi-level observations and morphometric using digital elevation databases. Previous studies related to aerodynamic parameters relevant to London (Ratti et al. 2002, 2006; Padhra 2010; Drew et al. 2013; Kotthaus and Grimmond 2014b) have results that vary with the study area, method and gridded datasets (e.g. Evans 2009) used. Overall, the maximum z_d and z_0 from these studies are 20 and 2 m, respectively. The objectives are a site-specific evaluation of: (i) the inter-method variability in aerodynamic parameters, and (ii) the implications for modelling the spatially- and temporally-averaged wind-speed profile.

The methodology to determine z_d and z_0 through surface morphology is provided for use in the Urban Multi-scale Environmental Predictor (UMEP, <http://www.urban-climate.net/umep/UMEP>, Lindberg et al. 2016) for the open source geographical information software QGIS.

2 Background

2.1 The Urban Boundary Layer and Logarithmic Wind Law

The urban boundary layer is traditionally sub-divided into distinct layers (Fernando 2010), which are determined by urban surface characteristics and mesoscale conditions (Barlow 2014). Surface roughness elements are located within the urban canopy layer (UCL) (Roth 2000; Oke 2007), which experiences highly variable flow as a consequence of the close proximity to roughness elements. The UCL is within the roughness sublayer (RSL) (Roth 2000), of depth H_{RSL} . The depth H_{RSL} is typically 2–5 times the average roughness-element height (H_{av}) (Roth 2000; Barlow 2014), but can be considerably larger (e.g. Roth 2000, their Table 2), varying with the density (Raupach et al. 1991; Grimmond and Oke 1999; Roth 2000; Oke 2007; Barlow 2014), staggering (Cheng and Castro 2002) and height variability (Cheng and Castro 2002) of roughness elements, as well as meteorological conditions (Roth 2000). Idealized physical models (Cheng and Castro 2002; Kastner-Klein and Rotach 2004; Xie et al. 2008), large-eddy simulations (LES) (Giometto et al. 2016) and observations in a dense urban setting (Grimmond et al. 2004) suggest the minimum $H_{RSL} = 2H_{av}$.

Between a height $z = H_{RSL}$ and approximately 10% of the boundary-layer depth is the inertial sublayer (ISL), though when there is considerable roughness-element height variability the RSL encroaches upon the ISL (Cheng and Castro 2002; Cheng et al. 2007; Mohammad et al. 2015b) and an ISL may cease to exist (Rotach 1999). Within the ISL, the flow becomes free of the individual wakes and channelling associated with roughness elements, and the small variation of the turbulent fluxes of heat and momentum with height leads to the assumption of a constant-flux layer. In addition, if the airflow is fully adapted to upwind roughness elements (i.e. disregarding an internal boundary layer) a horizontally homogeneous flow is observed (Barlow 2014) and it is therefore possible to determine a spatially- and temporally-averaged wind-speed profile.

The logarithmic wind law applies in the ISL and during thermally neutral conditions can be used to estimate wind speeds to a height of approximately 200 m (Cook 1997) using surface-based length scales (i.e. z_d and z_0) (Tennekes 1973),

$$\bar{u}_z = \frac{u_*}{\kappa} \ln \left(\frac{z - z_d}{z_0} \right), \quad (1)$$

where \bar{u}_z is the mean horizontal wind speed at height z , u_* is the friction velocity, and $\kappa = 0.40$ is the von Karman constant (Högström 1996).

3 Determination of Aerodynamic Parameters in Urban Areas

3.1 Reference-Based Methods

Reference-based approaches require comparison between site photography and first-order height and/or density estimates to reference tables (e.g. Grimmond and Oke 1999; Wieringa et al. 2001). Wieringa's (1993) comprehensive review of roughness length data provides tables for homogenous surfaces, whilst Grimmond and Oke (1999) focus upon urban areas, therefore the latter is used here.

3.2 Morphometric Methods

3.2.1 Relations Between Aerodynamic Parameters and Roughness-Element Geometry

Morphometrically-determined aerodynamic parameters in urban areas traditionally consider three flow regimes—isolated, wake interference and skimming (Oke 1987). These are related to the plan area index (ratio of plan built area occupied by roughness elements (A_p) to total area under consideration (A_T): $\lambda_p = A_p/A_T$) and frontal area index (ratio of the windward facing area of roughness elements (A_f) to A_T : $\lambda_f = A_f/A_T$). As surface cover (A_p) increases the magnitude of z_d scaled by H_{av} is traditionally observed to produce a convex curve asymptotically increasing from zero to 1 (Fig. 1a). In contrast, the relation between λ_f and z_0/H_{av} has a peak at λ_f between 0.1 and 0.4 depending on the method used to determine z_0 (Fig. 1b). The maximum possible λ_p is unity, although λ_f can exceed this.

Staggered and non-uniformly oriented groups of roughness elements generate a larger drag force than regular arrays, causing a more pronounced peak in z_0 , as well as larger values of z_d (Macdonald 2000; Cheng et al. 2007; Hagishima et al. 2009; Zaki et al. 2011; Claus et al. 2012). Roughness-element height variability also influences flow and turbulent characteristics, as the taller roughness elements generate a disproportionate amount of drag (Xie et al. 2008; Mohammad et al. 2015b). This suggests z_d can be greater than the average roughness-element height (e.g. Jiang et al. 2008; Xie et al. 2008; Hagishima et al. 2009; Zaki et al. 2011; Millward-Hopkins et al. 2011; Tanaka et al. 2011; Kanda et al. 2013), with a peak z_0 up to five times greater and displaced to higher λ_f (Hagishima et al. 2009; Zaki et al. 2011). Roughness-element staggering, orientation and most importantly height heterogeneity therefore need to be considered in morphometric calculations; especially in complex city centres, such as the current study site (Sect. 4.1).

3.2.2 Morphometric-Method Application in Urban Areas

Numerous morphometric methods exist (“Appendix”) and each method has its own assumptions and intended range of applicability. Newer methods have incorporated increasingly complex geometric features or theoretical ideas pertaining to the relation between aerodynamic parameters and surface morphology.

Here, six morphometric methods (Table 1) are selected for assessment that meet the following criteria: (i) both z_d and z_0 are included in the formulations; (ii) the method is applicable to a wide range of urban densities and environments; (iii) geometric data required are readily obtainable in complex urban environments; (iv) given resources available, the method is computationally feasible. Hereafter, the methods assessed are referred to by their abbreviation in Table 1. When followed by subscript z_d or z_0 the abbreviation refers to the zero-plane displacement or aerodynamic roughness length, respectively. The geometric parameters required by each method are shown in Table 1.

The simplest, “rule of thumb” method (RT), only requires the average roughness-element height (H_{av}) which is linearly related to RT_{z_d} and RT_{z_0} ,

$$RT_{z_d} = f_d H_{av}, \quad (2)$$

$$RT_{z_0} = f_0 H_{av}, \quad (3)$$

where the initial value used for f_d is 0.7 and for f_0 is 0.1 (Grimmond and Oke 1999). However, the value of f_d is revisited in Sect. 5.1.2.

Table 1 Morphometric methods assessed (rows) with their required geometric parameters (columns)

Abbreviation	H_{av}	λ_p	λ_f	H_{max}	σ_H
Morphometric methods					
<i>RT</i>	✓				
<i>Rau</i>	✓		✓		
<i>Bot</i>	✓	✓	✓		
<i>Mac</i>	✓	✓	✓		
<i>Mho</i>	✓	✓	✓		✓
<i>Kan</i>	✓	✓	✓	✓	✓

Morphometric-method abbreviations: *RT* rule of thumb (Grimmond and Oke 1999), *Rau* Raupach (1994), *Bot* Bottema and Mestayer (1998), *Mac* Macdonald et al. (1998), *Mho* Millward-Hopkins et al. (2011), *Kan* Kanda et al. (2013). Geometric parameters: H_{av} average roughness-element height, λ_p plan area index, λ_f frontal area index, H_{max} maximum roughness-element height, σ_H standard deviation of roughness-element heights

Originally derived for vegetated surfaces, the Raupach (1994) method (*Rau*) provides reasonable results in urban environments (e.g. Bottema and Mestayer 1998; Grimmond and Oke 1999),

$$Rau_{z_d} = \left(1 + \left\{ \frac{\exp[-(C_{dl} 2\lambda_f)^{0.5} - 1]}{(C_{dl} 2\lambda_f)^{0.5}} \right\} \right) H_{av}, \quad (4)$$

$$Rau_{z_0} = \left[\left(1 - \frac{z_d}{H_{av}} \right) \exp \left(-\kappa \frac{u_z}{u_*} + \Psi_h \right) \right] H_{av}, \quad (5)$$

with

$$\frac{u_*}{u_z} = \min \left[(C_S + C_{Dv} \lambda_f)^{0.5}, \left(\frac{u_*}{u_z} \right)_{\max} \right]. \quad (6)$$

Here u_z is the wind speed at roof height and empirical constants include: C_{Dv} (the drag coefficient for vegetation = 0.3), C_S (the drag coefficient for the substrate surface in the absence of roughness elements = 0.003), Ψ_h (the roughness-sublayer influence function—accounting for the correction to the logarithmic wind profile in the RSL = 0.193), C_{dl} (a free parameter = 7.5) and $(u_*/u_z)_{\max} = 0.3$. These constants suggested by Raupach (1994) are used here, but they do vary depending on roughness elements (Bottema and Mestayer 1998).

The Bottema and Mestayer (1998) method (*Bot*) is a simplified version of more complex formulations (Bottema 1995, 1997) specifically designed for urban areas. In the *Bot* method, a mutual sheltering parameter is used and it is assumed all of the drag experienced by the flow is due to roughness elements (therefore: $u_* = 0.5\rho C_{Db} u_z^2 \lambda_f$, where ρ is the density of air, and $C_{Db} = 0.8$ is the drag coefficient for buildings),

$$Bot_{z_d} = \lambda_p^{0.6} H_{av}, \quad (7)$$

$$Bot_{z_0} = (z - z_d) \exp \left(\frac{\kappa}{\sqrt{0.5\lambda_f C_{Db}}} \right) H_{av}. \quad (8)$$

The [Macdonald et al. \(1998\)](#) method (*Mac*) includes a fitting constant, α , controlling the increase of z_d/H_{av} with λ_p and a drag correction coefficient β to determine z_0 ,

$$Mac_{z_d} = [1 + \alpha^{-\lambda_p}(\lambda_p - 1)] H_{av}, \quad (9)$$

$$Mac_{z_0} = \left(\left(1 - \frac{z_d}{H_{av}} \right) \exp \left[- \left\{ 0.5\beta \frac{C_{Db}}{\kappa^2} \left(1 - \frac{z_d}{H_{av}} \right) \lambda_f \right\}^{-0.5} \right] \right) H_{av}. \quad (10)$$

[Macdonald et al. \(1998\)](#) suggest $C_{Db} = 1.2$ and from wind-tunnel data ([Hall et al. 1996](#)) values of $\alpha = 4.43$, $\beta = 1.0$ for staggered arrays, and $\alpha = 3.59$, $\beta = 0.55$ for square arrays ([Macdonald et al. 1998](#)). The suitability of these experimental data as a fit to the constants has been questioned because of the short fetch used and lack of direct shear-stress measurement ([Cheng et al. 2007](#)). [Ratti et al. \(2002\)](#) propose a correction to the *Mac* method to account for roughness-element height variability ($z_0 = Mac_{z_0}[1 + 4(\sigma_H/H_{av})]$, where σ_H is the standard deviation of roughness-element heights). However, the correction is not considered here as no basis is provided and z_d is not addressed. [Kastner-Klein and Rotach's \(2004\)](#) empirically derived relationship using wind-tunnel results from a scaled physical model of Nantes, France, is also not considered because it does not incorporate λ_f , a parameter that is regarded as important ([Millward-Hopkins et al. 2011](#); [Mohammad et al. 2015a](#)).

Two morphometric methods that directly incorporate roughness-element height variability are explored: the *Mho* ([Millward-Hopkins et al. 2011](#)) and *Kan* ([Kanda et al. 2013](#)) methods. Both are yet to be independently evaluated. The *Mho* method describes the viscous drag associated with the unsheltered frontal area of roughness elements (A_f^*) and their rooftops when density is below a critical threshold. The urban canopy is divided into layers and a cumulative-height normalized z_d and drag balance is calculated. This process is computationally intensive and complex to operate (Tomlin, 2015, pers. comm.), therefore, a relation based on the more accessible standard deviation of roughness-element heights has been developed ([Millward-Hopkins et al. 2011](#)),

$$Mho_{z_d} = H_{av} \left[\frac{MhoU_{z_d}}{H_{av}} + \left((0.2375 \ln(\lambda_p) + 1.1738) \frac{\sigma_H}{H_{av}} \right) \right], \quad (11)$$

$$Mho_{z_0} = H_{av} \left[\frac{MhoU_{z_0}}{H_{av}} + (\exp(0.8867\lambda_f) - 1) \left(\frac{\sigma_H}{H_{av}} \right)^{\exp(2.3271\lambda_f)} \right], \quad (12)$$

where

$$MhoU_{z_0} = \left(\left(1 - \frac{z_d}{H_{av}} \right) \exp \left[- \left\{ 0.5c_{Db}\kappa^{-2} \frac{A_f^*}{A_T} \right\}^{-0.5} \right] \right) H_{av}, \quad (13)$$

$$\frac{MhoU_{z_d}}{H_{av}} = \left(\frac{19.2\lambda_p - 1 + \exp(-19.2\lambda_p)}{19.2\lambda_p[1 - \exp(-19.2\lambda_p)]} \right) \text{ (for } \lambda_p \geq 0.19 \text{)}, \quad (14)$$

$$\frac{MhoU_{z_d}}{H_{av}} = \left(\frac{117\lambda_p + (187.2\lambda_p^3 - 6.1)[1 - \exp(-19.2\lambda_p)]}{(1 + 114\lambda_p + 187\lambda_p^3)[1 - \exp(-19.2\lambda_p)]} \right) \text{ (for } \lambda_p < 0.19 \text{)}. \quad (15)$$

The *Kan* method uses large-eddy simulations for real urban areas in Japan (107 grid squares of size 1000 m (x) by 1000 m (y) by 600 m (z) with a 2-m resolution) and 23 simple arrays from the literature ([Cheng et al. 2007](#); [Hagishima et al. 2009](#); [Leonardi and Castro 2010](#); [Zaki et al. 2011](#)). Horizontally-averaged turbulent statistics, surface drag and wind-speed profiles were derived for each model grid and aerodynamic parameters determined through a

least squares regression. Kanda et al. (2013) argue that the upper limit of z_d is the maximum roughness-element height (H_{max}), hence H_{max} is a more suitable scaling parameter than H_{av} ,

$$Kan_{z_d} = \left[c_0 X^2 + (a_0 \lambda_p^{b_0} - c_0) X \right] H_{max}, \quad (16)$$

where a_0 , b_0 and c_0 are taken as 1.29, 0.36 and -0.17 . X is the representative building height above the average building height ($\sigma_H + H_{av}$), relative to the maximum building height,

$$X = \frac{\sigma_H + H_{av}}{H_{max}}, \quad (17)$$

for $0 \leq X \leq 1$. For z_0 , the *Kan* method is a modification to *Mac* $_{z_0}$,

$$Kan_{z_0} = (b_1 Y^2 + c_1 Y + a_1) Mac_{z_0}, \quad (18)$$

where a_1 , b_1 and c_1 are empirically derived coefficients (0.71, 20.21 and -0.77), and Y accounts for the impact of λ_p and σ_H on z_0 , tending to zero for homogeneous arrays (i.e. where $\sigma_H = 0$),

$$Y = \frac{\lambda_p \sigma_H}{H_{av}}, \quad (19)$$

for $0 \leq Y$.

The six morphometric methods are applied across a range of roughness-element densities with homogeneous (Fig. 1a, b) and heterogeneous (Fig. 1c, d) height. Their comparison demonstrates that aerodynamic parameters determined using the *RT*, *Rau*, *Bot* and *Mac* methods are independent of the height array used. Hereafter, these methods are collectively referred to as *RE_{av}* (i.e. based upon average roughness-element height). In contrast, obvious differences occur for aerodynamic parameters determined using the *Mho* and *Kan* methods because of their direct consideration of height heterogeneity. Hereafter, the *Mho* and *Kan* methods are collectively referred to as *RE_{var}* (i.e. they account for variable roughness-element heights).

Across the six methods, z_d increases with H_{av} and λ_p (λ_f for *Rau* $_{z_d}$). The *Mho* and *Kan* methods both resolve the more considerable drag that is exerted by groups of roughness elements with height heterogeneity, therefore *Mho* $_{z_d}$ also increases with σ_H and *Kan* $_{z_d}$ increases with both σ_H and H_{max} . Results for *Bot* $_{z_d}$ and *Mac* $_{z_d}$ vary similarly with density (λ_p). The difference between *Mac* $_{z_d}$ for square or staggered arrays is negligible compared to inter-method variability (Fig. 1a, c). For the homogeneous array (Fig. 1a, b) both *Kan* $_{z_d}$ and *Mho* $_{z_d}$ (*Mho* $_{z_d}$ at $\lambda_p < 0.8$) are larger than for the other morphometric methods. *Kan* $_{z_d}$ becomes larger than H_{av} and *Mho* $_{z_d}$ levels off, implying both do not fulfil the requirement that $z_d/H_{av} = 1$ when $\lambda_p = 1$. Therefore, when $\lambda_p > 0.50$ the *Kan* and *Mho* methods may under- and over-estimate z_d for homogeneous arrays, respectively. As the methods were derived from datasets with $0.05 < \lambda_p < 0.50$ this is beyond their limits, and is uncommon for real cities (e.g. Fig. 1).

When roughness-element height heterogeneity is introduced (Fig. 1c, d), the *RE_{av}* method results are identical to the homogeneous case because H_{av} is the only height attribute used. In fact, *Kan* $_{z_d}$ and *Mho* $_{z_d}$ increase by a factor of approximately two and are therefore consistently twice the values for the *RE_{av}* methods. The increase of *Kan* $_{z_d}$ and *Mho* $_{z_d}$ suggests z_d is larger than H_{av} for most plan area densities. This is especially true for *Kan* $_{z_d}$, which scales with H_{max} (assumed 117 m) and increases with density to become over twice H_{av} .

For each method, z_0 increases to a maximum ‘critical’ frontal area index (λ_{f-crit}), and when roughness elements have homogeneous heights (Fig. 1b), λ_{f-crit} varies from a minimum of 0.11 (*Mho* $_{z_0}$) to a maximum of 0.3 (*Bot* $_{z_0}$). The peak magnitude is similar for

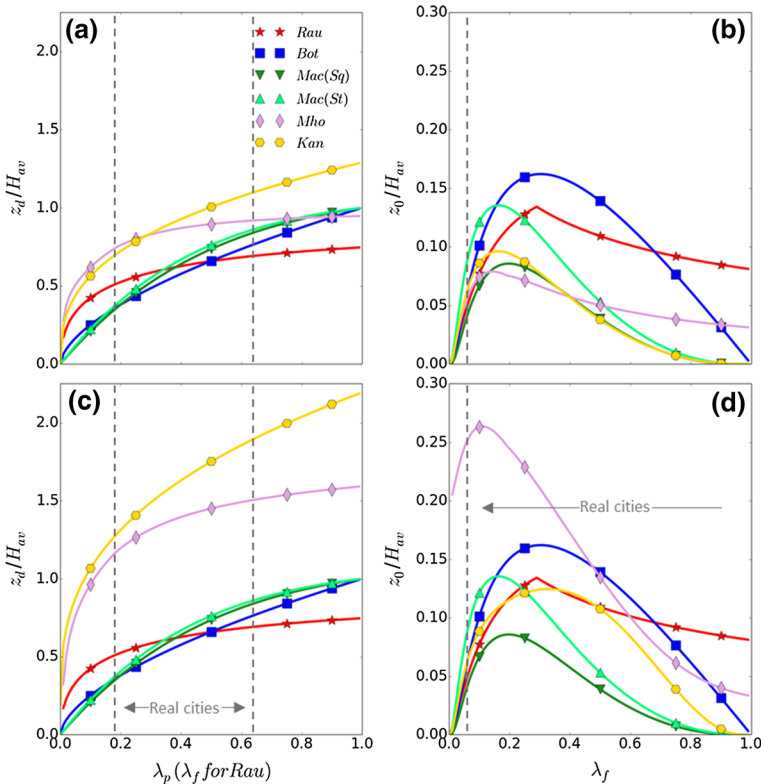


Fig. 1 Zero-plane displacement (z_d) and aerodynamic roughness length (z_0) normalized by average roughness-element height (H_{av}) for the morphometric methods assessed (Table 1), assuming roughness elements with: **a, b** homogeneous and **c, d** heterogeneous heights. Geometric parameters used are informed by the built surroundings within 1000 m of the KSSW site (Table 3): **a, b** $H_{av} = 20$ m, maximum height (H_{max}) = 20 m and standard deviation of heights (σ_H) = 0 m; **c, d** $H_{av} = 20$ m, $H_{max} = 117$ m, $\sigma_H = 11$ m. In both cases, frontal area index (λ_f) and plan area index (λ_p) are varied from 0 to 1, note λ_f can become larger than 1. The Mac method is shown for square (Sq) and staggered (St) arrays. Real city limits are based on Grimmond and Oke (1999). Curves shown may extend beyond the extent to which the model was originally developed

Mac_{z_0} for square arrays, Mho_{z_0} and Kan_{z_0} ($0.1H_{av}$), which is smaller than Mac_{z_0} for staggered arrays, Rau_{z_0} and Bot_{z_0} ($0.15H_{av}$). The decrease in z_0 beyond λ_{f-crit} is most obvious for Mac_{z_0} , whilst Bot_{z_0} remains larger across its wider peak. When height heterogeneity (σ_H) is introduced (Fig. 1d), an increase in Kan_{z_0} and especially Mho_{z_0} (up to a factor of four) is a response to the additional drag imposed by roughness elements of variable heights (Eqs. 12, 18). The Kan_{z_0} peak broadens to cover a wider range of densities.

3.3 Anemometric Methods

Multiple anemometric methods exist (“Appendix”) that use slow and fast response sensors located at appropriate heights for which the logarithmic wind law is valid (Sect. 2.2). As single-level observations are more frequently available, two methods to determine z_d and one to determine z_0 from single level, high frequency measurements are assessed. These use the meteorological variables indicated in Table 2.

Table 2 Anemometric methods used to calculate the (a) zero-plane displacement (z_d) and (b) aerodynamic roughness length (z_0) with their respective meteorological variables and required stability condition

Abbreviation	z	z_d	L	u_*	\bar{u}_z	σ_w	σ_u	σ_T	T_*	Stability
Anemometric methods										
(a) z_d										
TVM	✓		✓					✓	✓	Unstable
WVM	✓		✓	✓		✓				Unstable
(b) z_0										
EC	✓	✓	✓	✓	✓					Neutral

Methods TVM temperature variance method (Rotach 1994), WVM wind variance method (Toda and Sugita 2003), EC eddy covariance method (Grimmond et al. 1998). Variables z measurement height, z_d zero-plane displacement, L Obukhov length, u_* friction velocity, \bar{u}_z mean horizontal wind speed at height z , σ_w standard deviation of vertical velocity, σ_u standard deviation of horizontal velocity component, σ_T standard deviation of temperature, T_* temperature scale

To determine z_d the ‘temperature variance’ (Rotach 1994, Eq. 20) and ‘wind variance’ (Toda and Sugita 2003, Eq. 21) methods are used. These methods, based upon surface-layer scaling (Monin-Obukhov similarity theory), use the relation between the non-dimensional temperature variance, vertical velocity variance, and stability parameter z/L (Wyngaard et al. 1971; Tillman 1972),

$$\phi_T = \frac{\sigma_T}{T_*} = -C_1 \left(C_2 - \frac{z - z_d}{L} \right)^{-\frac{1}{3}}, \quad (20)$$

$$\phi_w = \frac{\sigma_w}{u_*} = C_3 \left(1 - C_4 \left[\frac{z - z_d}{L} \right] \right)^{\frac{1}{3}}, \quad (21)$$

where σ_T and σ_w are the standard deviation of temperature and vertical velocity respectively, T_* is the temperature scale ($T_* = -(\overline{w'T'})/u_*$), L is the Obukhov length ($L = -\bar{T}u_*^2/\kappa g T_*$, with g the acceleration due to gravity). Constants C_1 to C_4 are derived from observations, which vary across experiments and surfaces (e.g. Sorbjan 1989; Hsieh et al. 1996; Roth 2000). Using constants where z_d is assumed negligible ($C_1 = 0.99$, $C_2 = 0.06$, $C_3 = 1.25$ and $C_4 = 3$, Toda and Sugita 2003), the differences between observed (ϕ_{obs}) and estimated (ϕ_{est}) ϕ_T and ϕ_w are compared. The z_d is incrementally increased providing a new ϕ_{est} value (for n iterations) and the z_d value, which minimizes the root-mean-square error (RMSE) is taken as the appropriate value of z_d ,

$$RMSE = \sqrt{\left(\frac{1}{n} \right) \sum_{i=1}^n [(\phi_{est}) - (\phi_{obs})]^2}. \quad (22)$$

With z_d determined and a direct observation of u_* , the eddy-covariance (EC) method allows calculation of z_0 , through rearrangement of the logarithmic wind law,

$$z_0 = (z - z_d) \exp \left(-\frac{\bar{u}_z \kappa}{u_*} \right), \quad (23)$$

where \bar{u}_z and u_* are determined from observations at z . The EC method is applicable during near-neutral stability if stationarity is met (Foken and Wichura 1996). At least 20 observations

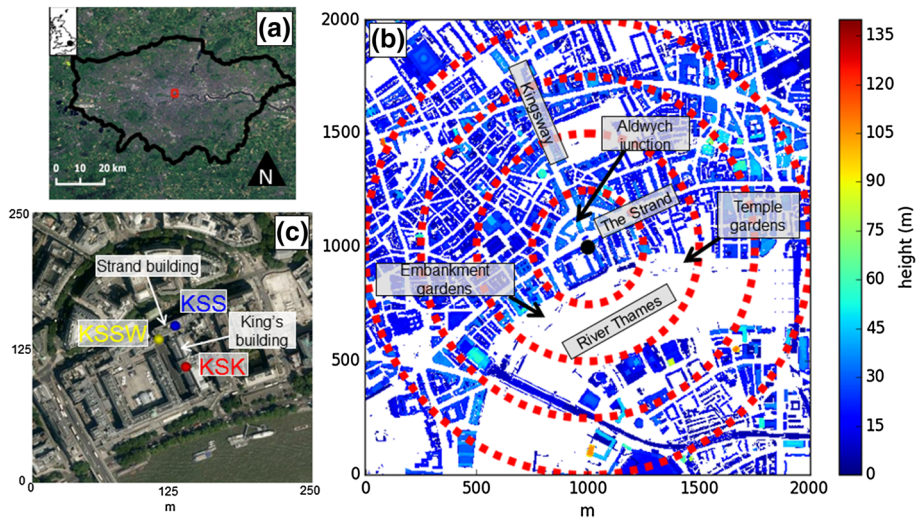


Fig. 2 Location of measurement sites KSK, KSS and KSSW at King's College London (KCL) (see text for details) **a** within Greater London, UK (*inset*); **b** building heights surrounding the sites (major features labelled), red dashed lines indicate 250, 500, 750 and 1000-m radii from the KSSW site (black point); and **c** 250 m surroundings of KCL. *Photography source: Google imagery (2014)*

are required to determine z_0 for a given wind-direction sector (Beljaars 1987; Grimmond et al. 1998). In addition, low wind speeds ($\bar{u}_z < 1 \text{ ms}^{-1}$) are excluded (Liu et al. 2009).

4 Methods

4.1 Site Description

Three London Urban Meteorological Observatory network (<http://micromet.reading.ac.uk/>) sites in the central activities zone of London (Fig. 2a) are used, where prior analyses have been undertaken (e.g. Kotthaus and Grimmond 2014a, b; Björkegren et al. 2015; Ward et al. 2015). Instrumentation at the Strand campus of King's College London (KCL) has been mounted on towers upon the King's building (KSK), the Strand building (KSS), and to the west on the Strand building (KSSW) (Fig. 2c). The sites are all within 60 m, so their surroundings are similar. The local climate zone (Stewart and Oke 2012) 'compact midrise', is characterized by taller buildings amidst midrise building stock. Land cover is mostly paved and buildings constructed with stone, brick, tile, and concrete. Small gardens are located approximately 200 m east and 250 m south-west of the sites (Fig. 2b), with larger expanses of vegetation in parks over 1 km to the west of the sites. Street canyons are located immediately north of the KSS and KSSW sites. One canyon (The Strand) extends for over 1 km in the north-east to south-west directions (orientation: 060° – 240°), and another (Kingsway) extends approximately 500 m to the north-north-west (orientation: 330°) (Fig. 2c). The River Thames is located to the south between directions 092° – 223° (site dependent, Table 3). Although geometric parameters and land cover vary with direction and meteorological conditions (through the measurement source area, Sect. 7), values based on a 1-km radius are provided in Table 3.

4.2 Observations

The period analysed for aerodynamic parameter determination is 2014 for the KSSW site and 2011 for the KSS and KSK sites. During independent assessment of the methods (Sect. 6), an additional 2 months in 2010 are considered at the KSS site. Identical instrumentation is used at the KSS and KSSW sites, as the equipment was moved along the Strand building (Fig. 2c) in 2012 preventing temporal overlap across all sites. The periods analyzed allow for seasonal variability of meteorological conditions, whilst limiting surface cover changes (e.g. construction).

A sonic anemometer (CSAT3, Campbell Scientific, US) measured the three-dimensional wind velocity and sonic temperature at a sampling frequency of 10 Hz at each site. The anemometers were supported by a single tube mast at the KSK site (Clark Masts CSQ T97/HP) and a triangular tower at the KSSW and KSS sites (Aluma T45-H). Instrument orientation was south-westerly to minimize potential mast-induced distortion for the prevailing wind directions.

The sensor heights are at $z = 1.97H_{av}$ (KSK), $2.48H_{av}$ (KSS) and $2.55H_{av}$ (KSSW) for H_{av} in the surrounding area of 1-km radius (Table 3). Although relative heights vary with direction and meteorological conditions (e.g. Sect. 7), measurements at the KSK site are closest to the top of the RSL and therefore more likely to be affected by roughness-element wakes. In contrast the sensors at the KSS and KSSW sites are assumed to be at heights above the RSL. To evaluate this assumption, analysis of drag coefficient and turbulence intensities was undertaken around the sites to identify potential flow disturbance from nearby roughness-element wakes (e.g. Barlow et al. 2009). The analysis at the KSK site reveals that flow from the northern sector is disturbed by the Strand building (Fig. 2c, as noted by Kotthaus and Grimmond 2014b). At the KSS site, disturbance of flow is aligned with a nearby rooftop microscale anthropogenic source of moisture and heat that has previously been shown to influence turbulent fluxes (Kotthaus and Grimmond 2012). At the KSSW site, potential disturbance is aligned with a tall slender structure protruding from the Strand building roof (Fig. 2c). Elsewhere, no disturbance is identified, indicating the measurements at the KSS and KSSW sites are predominantly clear of roughness-element wakes and therefore above $z = H_{RSL}$.

Data are pre-processed following Kotthaus and Grimmond (2014a). Eddy-covariance planar fit coordinate transformation is performed using 'ECpack' software (Van Dijk et al. 2004) and a yaw rotation provides wind speed aligned to the mean direction (Kaimal and Finnigan 1994). Humidity corrections are applied to the sonic temperature (Schotanus et al. 1983) and 30-min flux calculations are used to capture both the high and low end of the energy spectrum. An Ogive test (Moncrieff et al. 2004) ensured that this was an appropriate time period.

A Halo Photonics Streamline pulsed Doppler lidar situated at the KSSW site for 8 months (Table 3) operated in Doppler beam swinging mode, as outlined by Lane et al. (2013). The lidar, measuring wind speed and direction, has 30-m gates with the mid-point of the first usable gate 141 m above ground level. The sampling interval of 120 s allows 1-h averages to be calculated, which reduces error in the mean wind speed, whilst also ensuring stationarity (Lane et al. 2013).

Table 3 Characteristics of the measurement sites within a 1-km fetch: **(a)** sensor heights: metres above ground level, river position: bearing of the most northern point of the north bank, **(b)** geometric parameters and **(c)** surface cover

Site	WGS84: Lat (N), Lon (E)	Instrument	Sensor height (m a.g.l.)	Host roof height (m)	Observation period analysed	Potential flow disturbance (bearing °)	River position (bearing °)
(a) Instrument locations							
KSSW	51°30'42.48"– 0°7'0.192"	Halo Photonics Streamline pulsed Doppler lidar	–	35.6	1 Oct 2010–18 May 2011	–	097–212
KSS	51°30'43.2"– 0°6'58.8594"	CSAT3 Campbell Scientific 3D sonic anemometer	50.3	35.6	1 Jan 2014–31 Dec 2014	230–245	095–215
			48.9	35.6	1 Oct 2010–31 Dec 2011	045–090	
KSK	51°30'41.04"– 0°6'57.9594"		38.8	30.2	1 Jan 2011–31 Dec 2011	270–045	092–223
H_{av} (m)	λ_p	H_{max} (m)	σ_H (m)	Built	Paved	Grass	Trees and shrubs
(b) Geometric parameters							
19.74	0.41	116.72	10.83	(c) Surface cover (%) 40.7	40.3	6.8	1.00
							11.2

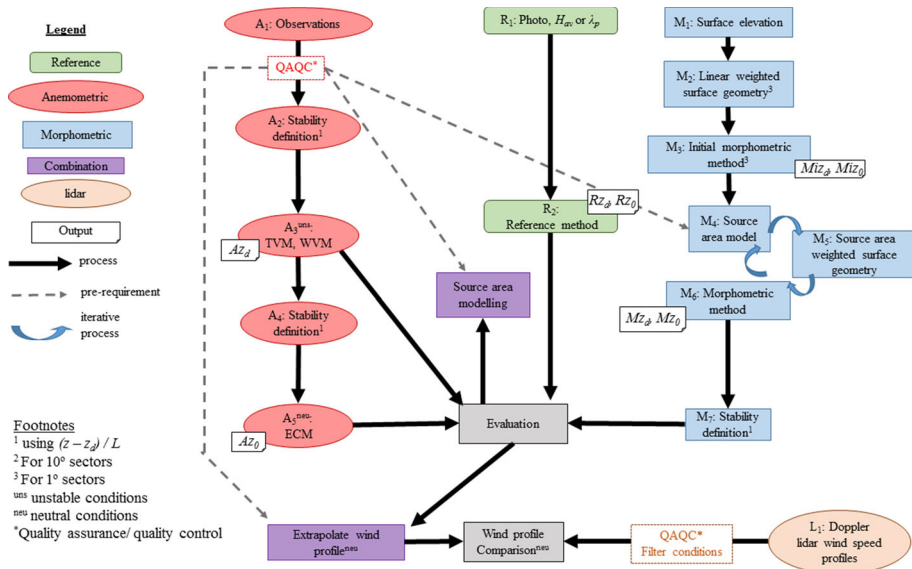


Fig. 3 Flow diagram of the determination of aerodynamic parameters at the London sites using anemometric (A), reference (R) and morphometric (M) methods

4.3 Determination of Aerodynamic Parameters

4.3.1 Flow Diagram Illustrating Framework of Analysis

At each of the measurement sites, local aerodynamic parameters are determined using the reference-based, morphometric and anemometric methods (Fig. 3) and evaluated (Sect. 5). Wind-speed profiles are then extrapolated using the logarithmic wind law (Eq. 1) and aerodynamic parameters from each method for comparison to wind speeds observed aloft using Doppler lidar (Fig. 3, L_1) (Sect. 6). An example of the impacts upon the source area for measurements is also shown (Sect. 7).

Application of the reference-based approach only requires aerial photography (Fig. 3, R_1) to provide aerodynamic parameters (Fig. 3, R_2). The more involved anemometric and morphometric determination of z_d and z_0 are expanded upon in Sects. 4.3.2 and 4.3.3, respectively. Decisions or available resources at each step potentially influence results; e.g. if a source area footprint model is used (Fig. 3, M_4).

4.3.2 Anemometric Determination of Aerodynamic Parameters

To determine z_d with the temperature and velocity variance methods (Fig. 3, A_3), 10° directional sectors are used (000° – 010° , etc) to provide sufficient observations whilst allowing for varying fetch. As the methods require unstable conditions ($0.05 \leq z'/L \leq 6.2$, Roth 2000, where $z' = z - z_d$), an a priori assumption of z_d is required (Fig. 3, A_2). The methods are applied by defining stability with several values of z_d , ranging from zero to the measurement height in 5-m increments, providing a range of solutions for each 10° sector. If the denominator in $\phi_T(T_*)$ or $\phi_w(u_*)$ (Eqs. 20, 21, respectively) approaches zero, periods are removed. The additional criteria of $u_* > 0.05 \text{ m s}^{-1}$ and $T_* < -0.05 \text{ K}$ may remove

difficulties encountered using the methods in previous studies (e.g. De Bruin and Verhoef 1999; Rooney 2001). The methods are applied using rural ($C_1 - C_4$, Sect. 3.3) and urban (Roth 2000) constants, as well as those determined using non-linear regression (Bates and Watts 1988) of Eqs. 20 and 21 to observations at each site. However, the two latter methods require an a priori assumption of z_d and therefore provide a solution that is similar to the initial z_d , and not useful.

The z_d value from both the temperature and velocity variance methods for each 10° sector are used to determine neutral conditions $|z'/L| \leq 0.05$ (Fig. 3, A₄), and subsequently to calculate z_0 (Fig. 3, A₅) using the EC method (Eq. 23).

4.3.3 Morphometric Determination of Aerodynamic Parameters

A 4-m resolution surface elevation dataset (Lindberg and Grimmond 2011) is used to determine the geometric parameters required to apply the morphometric methods (Fig. 3, M₁). For each morphometric method an initial estimation of z_d and z_0 is made for 1° sectors and a 1-km fetch (Miz_d , Miz_0) (Fig. 3, M₃). During this process, four annuli are used (0–250, 250–500, 500–750 and 750–1000 m; e.g. Fig. 2b for the KSSW site) to weight surface geometry (50.00, 31.25, 12.5 and 6.25%, respectively), based on Kotthaus and Grimmond's (2014b) footprint climatology. The Kormann and Meixner (2001) analytical footprint model (Fig. 3, M₄) is then used to indicate the probable extent of the turbulent flux source area for each 30-min period of meteorological observations. The footprint model requires the measurement height and the observed σ_v (standard deviation of the lateral velocity component), L , u_* and wind direction. It also requires z_d and z_0 , hence their initial estimation (Miz_d and Miz_0) that is averaged across σ_v for each period of observations (Kotthaus and Grimmond 2014b).

The 80% cumulative source area for each measurement (30-min) is used to weight the fractional contribution of each grid square in the surface elevation database (Fig. 3, M₅). A weighted geometry is then determined, allowing for source area specific aerodynamic parameters (Mz_d and Mz_0) to be calculated for each morphometric method (Fig. 3, M₆). The Mz_d and Mz_0 values for each observation period are iteratively provided to the source area model until the mean absolute difference of the parameter between iterations is $< 5\%$ or four iterations are performed. The latter is deemed appropriate given computational requirements and the range of values across the methods (Sect. 5). The methodology implies that Mz_d and Mz_0 vary for each 30-min time period as a consequence of the varying source area. When the source area becomes so small that it covers only the nearest few roughness elements (e.g. during very unstable conditions or large z_d) a morphometrically determined z_d or z_0 is inappropriate. Therefore, only source areas extending horizontally beyond 100 m from the measurement sensor are considered.

The initially-estimated aerodynamic parameters (Fig. 3, step M₃: Miz_d and Miz_0) were found to be independent of the solution, irrespective of source area model (Kormann and Meixner 2001; Kljun et al. 2015 models used). Thus, it is possible to omit steps M₂ and M₃ (Fig. 3) and initialize the model with any reasonable roughness parameters (e.g. open country: $z_0 = 0.03$ m, $z_d = 0.2$ m). Here, steps M₂ and M₃ are retained for completeness. In addition, the Kormann and Meixner (2001) model is used, as the Kljun et al. (2015) model requires specification of the boundary-layer height, which is not available for all observations.

5 Results

5.1 Zero-Plane Displacement (z_d)

5.1.1 z_d Determined by Anemometric Methods

The stages of the application of the temperature and velocity variance methods are demonstrated for the KSSW site in Fig. 4. The z_d values determined by each method are unbiased by the initial z_d used to define stability (Sect. 4.3.2), which causes <5-m variability in any wind direction (indicated by the range in each method, Fig. 5). In addition, the impact of varying the empirical coefficients $C_1 - C_4$ (Sect. 3.3.) (based on Sorbjan 1989 and Hsieh et al. 1996) is < 5 m in any 10° sector, and therefore generates similar uncertainty to that of the stability definition (Fig. 5a–c).

The similarity relations (Eqs. 20, 21) for temperature are consistently associated with a larger *RMSE* value compared to those for vertical velocity (e.g. Fig. 4d, e), because the temperature data have a relatively larger spread. Across sites, *RMSE* values for the velocity variance method relation varies between 0.18 and 0.49, whilst it is 0.35–0.97 for the temperature variance method. The larger *RMSE* values associated with the temperature data may be caused by the thermal inhomogeneity of the area. The *RMSE* value for the temperature data increases with height (i.e. the largest *RMSE* value is observed at the KSSW site), which is attributable to the larger extent of the source area and more numerous sources and sinks of heat.

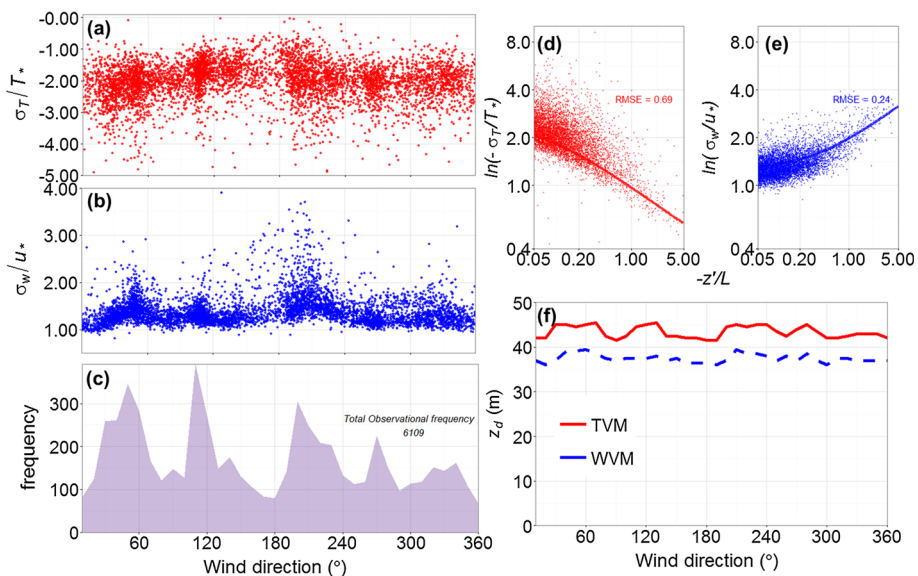


Fig. 4 Application of the temperature variance (TVM) and wind variance (WVM) anemometric methods at the KSSW site to determine z_d during unstable conditions ($-6.2 \leq z'/L \leq -0.05$), with $z_d = 30$ m used to define stability. Results shown are 30-min observations (points) of the scaled: **a** standard deviation of temperature (σ_T/T_*) and **b** vertical wind velocity (σ_w/u_*) by wind direction; and **c** frequency of unstable conditions for 10° bins. Non-linear fit (line) to observations for **d** TVM (Eq. 20) and **e** WVM (Eq. 21), with *RMSE* values; **f** Solution for z_d (10° sectors) for the TVM (red solid line) and WVM (blue dashed line) methods

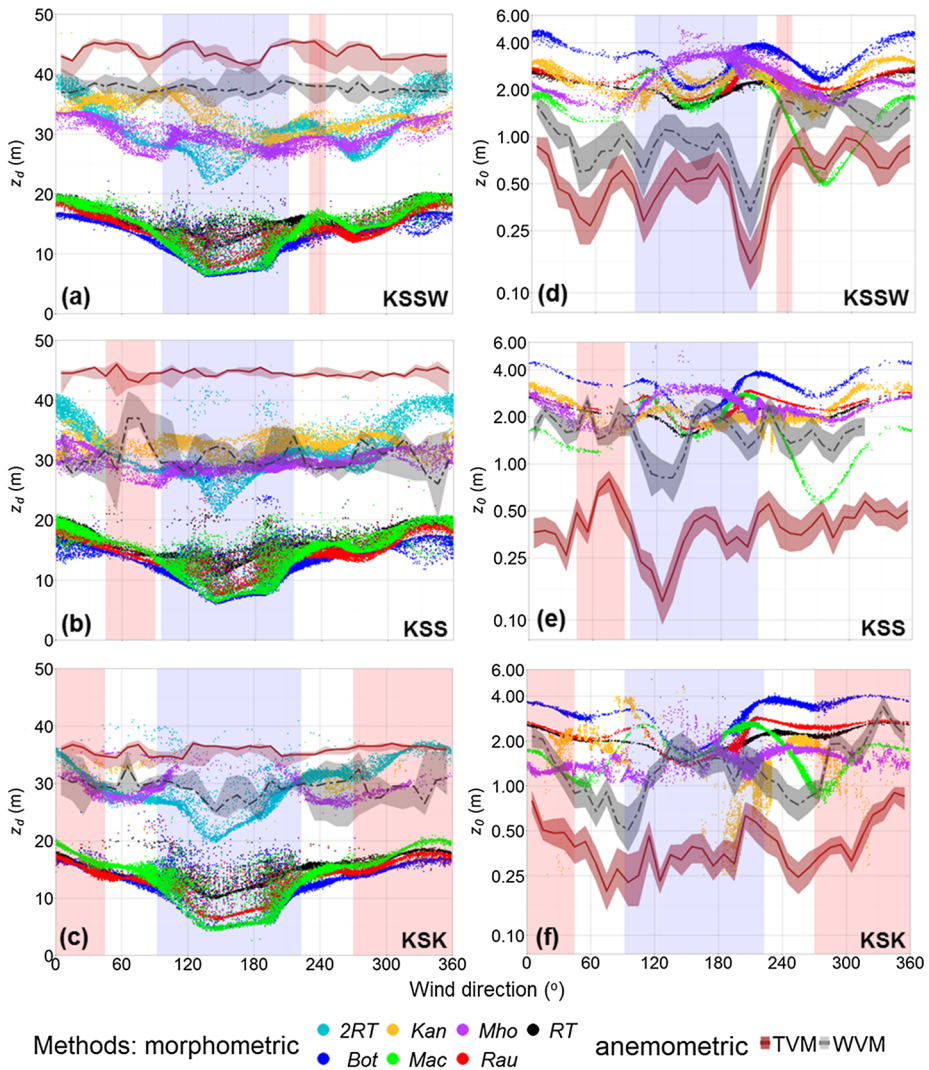


Fig. 5 Comparison of anemometric (*lines and shading*) and morphometric (*points*) methods to determine the **a, b, c** zero-plane displacement (z_d) and **d, e, f** aerodynamic roughness length (z_0) (note $\ln y$ axis) surrounding the three assessed sites (Fig. 2). For anemometric methods, z_d is the median solution of the temperature variance (TVM, *solid line*) and velocity variance (WVM, *dashed line*) methods, respectively, applied to 30-min observations during unstable conditions ($-6.2 \leq z'/L \leq -0.05$) for 10° sectors. The range (*shading*) represents all possible solutions by varying z_d used for stability definition from zero to the measurement height; z_0 is the median (*lines*) and upper and lower quartile (*shaded*) of the eddy-covariance method (Eq. 23) during neutral conditions ($|z'/L| \leq 0.05$) for each 10° sector using z_d from the TVM and WVM, respectively. Morphometric methods use geometry weighted by the final iterated footprint for each 30-min observation (Sect. 4.3.3) for the same stability conditions as anemometric methods, however, z_d in z'/L is determined by the respective morphometric method for each observation. *Background shading* is in directions where the River Thames is located (*blue*) and where turbulence data indicate a disturbance (*red*). For method abbreviations see Tables 1 and 2

Toda and Sugita (2003) suggest application of both the temperature and velocity variance methods assist in the determination of z_d . This is true at both the KSSW and KSK sites where z_d determined using each method varies by approximately 5 m for each 10° sector (Figs. 4f, 5a, c). In comparison, the method solutions at the KSS site consistently vary by > 13 m (Fig. 5b). The large variability at the KSS site is most likely associated with the nearby rooftop microscale anthropogenic sources of moisture and heat (Kotthaus and Grimmond 2012) influencing turbulent fluxes.

The z_d based on the temperature variance method is consistently larger than that for the velocity variance method (Fig. 5a–c). Previous studies found z_d may be larger than H_{av} in urban areas using both the temperature (Grimmond et al. 1998, 2002; Feigenwinter et al. 1999; Kanda et al. 2002; Christen 2005; Chang and Huynh 2007; Tanaka et al. 2011) and velocity (Tsuang et al. 2003) variance approaches. Results at the KCL sites support this, as z_d is up to twice H_{av} ($H_{av} = 19.74$ m, Table 3).

No obvious association is evident between the directional variability of z_d and surface characteristics. For the temperature variance method, z_d is similar for all directions at each site (Fig. 5a–c), varying by < 5 m. Whereas, the velocity variance method z_d varies by up to 10 m, possibly because of occasional flow interference from roughness-element wakes. The parks (1–2 km upwind to the west) do not obviously influence z_d , but considering the extent of the source area for the measurements (Sect. 7) this is expected. The River Thames (Fig. 5a–c, blue shading) and small parks (Fig. 2b) closer to the measurement sites also do not affect the z_d values. Following Jackson (1981), z_d is the centroid of the drag profile of the roughness elements. The lack of directional variability in anemometric z_d indicates the surface drag is dominated by taller roughness elements (maximum building height is 40–60 m in all directions). This is consistent with the disproportionate amount of drag observed to be exerted by taller roughness elements in a heterogeneous mix (Xie et al. 2008; Mohammad et al. 2015b).

5.1.2 z_d Determined by Morphometric Methods

There is less inter-site variability in z_d values determined using each morphometric method, compared to the anemometric methods (Fig. 5a–c). However, the range of values between morphometric methods (intra-site variability) is larger than for the anemometric methods. There is an obvious separation between the methods based upon uniform (*RT*, *Bot*, *Rau*, *Mac*: RE_{av}) and heterogeneous (*Kan* and *Mho*: RE_{var}) roughness-element heights. Across the sites, the former range between 5 and 20 m, whereas the latter are between 25 and 40 m (or almost twice the RE_{av} methods). The river, between directions 092° – 223° (site dependent, see Table 1), causes a reduction in average height and therefore also in z_d determined by the RE_{av} methods. In comparison, the RE_{var} methods are unresponsive because σ_H becomes larger in these directions. The variability between the morphometric methods therefore becomes at least a factor of four in directions where the river is located.

When the measurement footprint has higher urban densities (non-river directions) z_d determined by the RE_{av} methods varies between 15 and 20 m across all three sites, with an approximate inter-method variability of ± 5 m. This increases to ± 10 m when the river sector is included, with z_d values as low as 5 m at the KSK site. The variability of the RE_{av} methods in the river sector (Fig. 5a–c) is proportional to the extent of the source area that is occupied by the river, which reduces λ_p . Between the methods, Bot_{z_d} is consistently smallest and Mac_{z_d} is the largest for more densely packed directions.

As expected from the sensitivity analysis (Fig. 1), Kan_{z_d} is consistently up to 5 m larger than Mho_{z_d} (Fig. 5a–c). Both methods indicate $z_d \geq 1.5H_{av}$ for the surrounding area—a

value typically used to estimate the minimum RSL depth (Roth 2000). Such high z_d values support the contention that roughness-element height variability is important when considering the determination of H_{RSL} , in addition to, for example, H_{av} and roughness-element spacing (Cheng and Castro 2002). An effective mean building height has been suggested as a more appropriate scaling parameter for H_{RSL} that incorporates building-height variability (Millward-Hopkins et al. 2011, their Eq. 21). It may also be possible to consider the influence of height variability on H_{RSL} through directly considering σ_H or H_{max} (e.g. $H_{RSL} = 2H_{av} + \sigma_H$). At the KSK site, the z_d value determined by the RE_{var} methods is consistently of the order of the measurement height, or greater, suggesting that the flux footprint either cannot be calculated or is consistently smaller than 100 m in horizontal extent and therefore few values are reported here (Fig. 5c, f).

If the f_d constant used in the RT method is doubled (Eq. 2), the predicted z_d value aligns reasonably well with the z_d value estimated by the RE_{var} methods (Fig. 5a–c, $2RT$). This suggests that if limited geometric parameters are available (i.e. only H_{av}), the choice of $2RT_{z_d}$ may provide a useful proxy for z_d determined by the RE_{var} methods in a heterogeneous mix. Assessment of the geometric parameters for each morphometric method's respective source area indicates the magnitude of z_d for all methods is fundamentally determined by the directional variability in λ_p . This includes Mho_{z_d} and Kan_{z_d} , both of which are more sensitive to variability in λ_p , despite their direct incorporation of σ_H and/or H_{max} .

5.2 Aerodynamic Roughness Length (z_0)

5.2.1 z_0 Determined by Anemometric Methods

The aerodynamic roughness length determined using the EC method is a function of both observations (i.e. \bar{u}_z and u_* for each 30-min observation) and the z_d determined using the temperature and velocity variance methods. Therefore, the consistently larger z_d determined using the temperature variance method (Fig. 5a–c) implies that the associated z_0 is consistently lower than that of the velocity variance method. For each method, the interquartile range of z_0 (Fig. 5d–f shading around lines) consistently falls within ± 0.25 m from the median for each 10° sector. In directions where turbulence data indicate disturbance (Sect. 4.2, Fig. 5, directions with red shading) there is an increase in z_0 because of the increased friction velocity in the same direction.

In directions without the river, the median z_0 varies between 0.25 and 3 m, tending towards the lower end of typical z_0 values reported for cities (Grimmond and Oke 1999). This is likely because the dense packing of roughness elements (λ_f and $\lambda_p \geq 0.5$) creates a flow more characteristic of skimming than chaotic (e.g. Oke 1987).

When the flow is aligned with the river (Fig. 5d–f, between 090° – 120° and 190° – 210°), z_0 values become smallest at the KSSW and KSS sites (as low as 0.1 m) because of flow along the smoother more homogeneous surface. This reduction is not obvious at the KSK site because of its lower siting and associated smaller source area (i.e. these measurements tend not to be affected by the river) (Sect. 7). At the KSSW site a reduction in z_0 to 0.25 m also occurs when the flow is aligned with the adjacent Strand street canyon (060° , Fig. 2), because of the reduction of drag as flow is channelled along the canyon. The effect of the channelling is not observed at the KSK site because of its lower and more southerly siting, nor at the KSS site because of the microscale anthropogenic heat and moisture source in the same direction (Sect. 4.2).

5.2.2 z_0 Determined by Morphometric Methods

The morphometric methods (except for the *Mho* method) have relative peaks in z_0 at the edges of the river sector (Fig. 5 blue shading) similar to where the anemometric z_0 becomes lowest (Sect. 5.2.1). This is because, although the majority of a source area may lack roughness elements and be smooth, the morphometric methods are responsive to the geometry calculated within the source area, which according to the morphometric method formulations generates disrupted flow. The peaks in the morphometrically-determined z_0 occur when the source area falls upon both river and buildings causing λ_f to be close to λ_{f-crit} (Fig. 1). When most of the source area is river, λ_f becomes smallest ($\lambda_f = 0.2$). Here, the *Mho* method indicates the highest z_0 because the maximum Mho_{z_0} occurs at these smaller λ_f values (Fig. 1).

All morphometric methods indicate increased roughness to the north of the sites, in response to increased roughness-element height (H_{av} up to 30 m). The variable surface morphology implies that inter-method variability is largest in these directions, varying between 1 and 4 m. In comparison, inter-method variability is least in the river sector (1.0–3.5 m), associated with the most consistent surface morphology. The directional variability of z_0 is primarily a function of λ_f for all methods (except the *RT* method). The λ_f value varies between 0.2 and 0.8 with wind direction, and the greater sensitivity of Bot_{z_0} and Mac_{z_0} to λ_f (Fig. 1), implies they vary most with direction. Bot_{z_0} is consistently 2 m larger than all other morphometric methods because of its more pronounced peak of z_0 (Fig. 1). In comparison, Mac_{z_0} tends to be lowest, especially where there is a greater frontal area index of roughness elements (e.g. $240^\circ - 300^\circ$ where $\lambda_f \geq 0.5$) because of its comparatively steep reduction of z_0 at higher λ_f (e.g. Fig. 1).

The inclusion of Mac_{z_0} in Kan_{z_0} means that they vary similarly with direction. However, Kan_{z_0} tends to be 1–2 m larger than Mac_{z_0} in directions with higher frontal area, as the former does not have the steep drop off found in Mac_{z_0} at higher λ_f (e.g. $240^\circ - 300^\circ$ at the KSSW and KSS sites). An increasingly smaller source area occurs as the RE_{var} method values of z_d become similar to the measurement height at the KSK site. This explains the spread and lack of calculated Kan_{z_0} and Mho_{z_0} here (Fig. 5f).

5.3 Comparison Between Anemometric and Morphometric Aerodynamic Parameters

Application of the anemometric and morphometric methods at the London sites indicates that no individual value or method is optimum for aerodynamic parameter determination. Furthermore, the variability within and between the anemometric methods suggest it is not straightforward to use these as a basis for assessing morphometric methods. Therefore, the morphometric and anemometric z_d are compared using the root-mean-squared error ($RMSE_{z_d}$). For comparison of z_0 the logarithmic influence (e.g. Eq. 1) is accounted for by using the root-mean-squared geometric error ($RMSGE_{z_0}$) (Jachner et al. 2007)

$$RMSGE_{z_0} = \exp \left[\frac{\sum_{i=1}^n \ln(A_{z_0}/M_{z_0})^2}{n} \right]^{0.5}, \quad (24)$$

where A_{z_0} and M_{z_0} are the anemometric and morphometrically determined z_0 , respectively. The $RMSE_{z_d}$ and $RMSGE_{z_0}$ values between each morphometric and anemometric method at each site are plotted against each other in Fig. 6 (smaller symbols), with the larger circles representing the values for all observations.

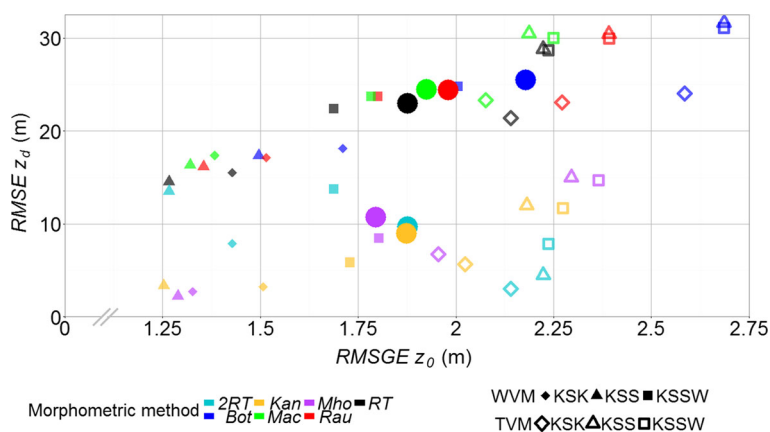


Fig. 6 Root-mean-square error ($RMSE$) analysis of the aerodynamic parameters determined using the morphometric and anemometric methods for each 30-min period of observations at each site (*smaller symbols*) and for all observations (*larger symbols*). The $RMSE$ value for z_d is plotted against root-mean-square geometric error ($RMSGE$) for z_0 (Eq. 24). The z_d is for unstable conditions ($-6.2 \leq z'/L \leq -0.05$ with z_d in z'/L for each morphometric method) and z_0 is for neutral conditions ($|z'/L| \leq 0.05$, with z_d in z'/L for each morphometric method). See Tables 1 and 2 for method abbreviations

Errors across the sites range between 2.25 and 31.4 m for zero-plane displacement and 1.25–2.7 m for roughness length (Fig. 6). For z_d , similarity between the anemometric methods and the RE_{var} morphometric methods (Figs. 5, 6), suggests $z_d > H_{av}$ in the surrounding area (20 m, Table 3). Use of the *Kan*, *Mho* and *2RT* methods results in the lowest $RMSE_{z_d}$ across all observations (approximately 10 m), in comparison to the RE_{av} methods that have $RMSE_{z_d} = 25$ m (Fig. 6, large circles). The morphometrically-determined z_0 is consistently greater than the anemometric z_0 (Fig. 5d–f), which is more obvious for the temperature variance method ($RMSGE_{z_0}$ up to 2.70 m) than the wind variance method ($RMSGE_{z_0}$ of up to 2 m) (Fig. 6). No individual morphometric method calculates z_0 that is consistently similar to the anemometric methods, with $RMSGE_{z_0}$ values for all observations ranging between 1.75 and 2 m (Fig. 6, circles). However, *Bot* $_{z_0}$ deviates the furthest from observations ($RMSGE_{z_0} > 2.2$ m) given its considerably larger magnitude (Fig. 5d–f).

Both aerodynamic parameters (z_d and z_0) are required for use in the logarithmic wind law. The difference in z_d between the RE_{var} and RE_{av} methods is not compensated for in their respective z_0 values. Therefore, z_d and z_0 determined by the RE_{var} methods are consistently almost twice that of the RE_{av} methods. The *2RT* method ($2RT_{z_d} + 2RT_{z_0}$) is closest to observations for both z_d and z_0 , despite being a simple method to bring the *RT* method in line with the RE_{var} methods. In contrast, the *Bot* method is consistently furthest from observations for both aerodynamic parameters.

5.4 Reference-Based Approach

Aerodynamic parameters from numerous field studies using observations and morphometric methods (the RE_{av} methods only) informed Grimmond and Oke's (1999, their Table 6 and Fig. 7) synthesis, which is complemented with photography for application. Use of a reference-based approach to determine aerodynamic parameters at the KCL sites indicates only that $z_d > 7$ m and $z_0 > 0.8$ m for all directions. This demonstrates the limitations of using reference-based approaches in complex urban areas, as they offer a broad range of values. In

addition, the reference-based approach does not have sufficient detail to resolve the directional variability in z_d and z_0 with local features, such as the channelling of wind flow along the River which lowered z_0 determined from observations (Sect. 5.2.1). The variability in both land cover and roughness-element height are only coarsely considered in reference classes. In addition, use of aerial photography remains subjective—for example ‘high’ and ‘high-rise’ categories (Grimmond and Oke 1999 their Fig. 7) both occur in the vicinity of the KCL sites, so selection may be inconsistent.

6 Independent Method Assessment—Wind-Speed Profile Extrapolation

With an observed wind speed (\bar{u}_{ref}) at a reference height (z_{ref}) during neutral conditions, locally determined aerodynamic parameters can be used to estimate the wind speed (\bar{u}_z) at a second height (z) using the logarithmic wind law (e.g. Wieringa 1993; Verkaik 2000)

$$\bar{u}_z = \bar{u}_{ref} \frac{\ln \left\{ \frac{(z - z_d)}{z_0} \right\}}{\ln \left\{ \frac{(z_{ref} - z_d)}{z_0} \right\}}. \quad (25)$$

The different methods to determine z_d and z_0 are independently assessed through comparing wind speeds estimated using the logarithmic law by each method (Eq. 25) to wind-speed profiles observed with Doppler lidar (Fig. 3, L_1). For the comparison, the lidar is located at the KSSW site location (Sect. 4.2). Therefore, observations from the KSS site (45 m east of the KSSW site, Fig. 2) provide \bar{u}_{ref} ($z_{ref} = 48.9$ m) and other variables (Eq. 25). Hourly data are used to ensure acceptable errors in the lidar data (Lane et al. 2013). The wind speed for each method is calculated at 1-m height intervals and then averaged over 30-m “gates” to correspond to the vertical resolution of the lidar.

Observations at a greater height have a larger source area. Identical fetch in any direction is rare in an urban area, therefore, it is likely that z_d and z_0 should also adjust with source area. To constrain changes in z_d and z_0 throughout the profile, as well as the likelihood of overlapping internal boundary layers from surface discontinuities (e.g. Garratt 1990), the analysis is undertaken for the most homogeneous fetch within 10 km of the KSSW site (Fig. 2). This is deemed to be the 000°–045° direction based upon 500-m grid squares of average ground height and the H_{av} , H_{max} and σ_H values of roughness elements from the surface elevation database (Lindberg and Grimmond 2011).

Outside of neutral stability, corrections are required to the logarithmic wind profile. These are based upon empirical fits to observations aloft of idealized surfaces and can vary considerably (Högström 1996). Such corrections therefore introduce a source of uncertainty into extrapolated wind speeds and given the objective to evaluate aerodynamic parameters determined by different methods, only neutral stability is considered here. To ensure wind-speed profiles are most likely for neutral stability, the highest (upper quartile) wind speeds are used (Drew et al. 2013). Regression between the inverse of the Obukhov length ($1/L$) and wind speed measured at the KSS site for the same times confirms the tendency of the stability parameter z'/L towards zero (neutral) as wind speeds increase. To ensure the depth of the urban boundary layer is sufficient, analysis is restricted to the lowest 200 m of daytime (0900–1700 h) profiles so the logarithmic wind law is appropriate (Cook 1997; Tieleman 2008; Li et al. 2010; Drew et al. 2013). After filtering the lidar data, 33 profiles are available from the 000° – 045° sector with upper quartile wind speeds. Data are analyzed from the lowest three gates (mid-points: 141, 171 and 201 m).

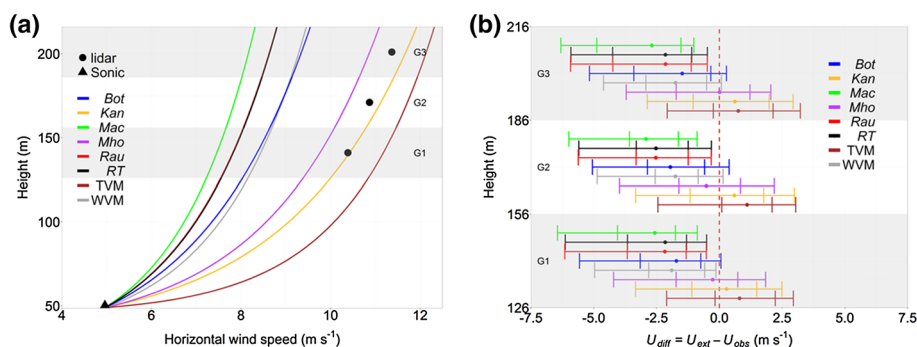


Fig. 7 Variation of mean hourly wind speed with height (33 profiles, see text for selection): **a** mean of extrapolated profiles (Eq. 25) with locally determined aerodynamic parameters from the KSS site (triangle) and each 30-m lidar gate (points). **b** Median (points) difference (U_{diff}) between observed (U_{obs}) and extrapolated (U_{ext}) wind speeds at 30-m lidar gates. Whiskers are the 5th, 25th, 75th and 95th percentiles. Gates are shaded G1–G3 (G1 = 126 – 156 m, mid-point = 141 m). See Tables 1 and 2 for method abbreviations

The mean observed wind speeds in each 30-m gate are 10.4, 10.9 and 11.4 m s⁻¹ (lowest to highest, Fig. 7a). These are most similar to the greater wind speeds extrapolated using aerodynamic parameters from the *Kan*, *Mho* and temperature variance methods (Fig. 7a). Both z_d and z_0 are free parameters in Eq. 25, therefore two different pairs of values can predict the same wind speed aloft. However, the comparatively lower z_d of the *RE_{av}* methods and lack of compensation for this in z_0 means that their extrapolated wind speeds are less than those from both the *RE_{var}* methods and observations (Fig. 7).

The differences (U_{diff}) between wind speeds extrapolated using the different methods and wind speeds observed by the lidar (for each of the 33 profiles compared) are summarized in Fig. 7b. Over 95% of observed wind speeds are underestimated by the *RE_{av}* methods, with median underestimation between 1.5 a and 2.9 m s⁻¹ (Fig. 7b). The higher extrapolated wind speeds using the *RE_{var}* methods have a median $U_{diff} < 0.6$ m s⁻¹ for all three lidar gates, which is within 6% of the mean observed wind speed. In addition, wind speeds extrapolated using the *RE_{var}* methods most resemble the distribution of observed wind speeds, tending to evenly underestimate or overestimate observations (approximately 50% of cases respectively). The temperature variance method's largest z_d and smallest z_0 produce a consistent overestimate in the wind speed (75% of cases), however it still shows a median $U_{diff} < 1.1$ m s⁻¹ for all gates (Fig. 7b).

Results suggest that if high wind speeds are of concern, aerodynamic parameters determined using the *Mho*, *Kan* or temperature variance methods may be the most appropriate methods to estimate the neutral vertical profile of wind speed. No relation is observed between the individual U_{diff} values and either meteorological conditions (e.g. L , \bar{u}_{ref} , u_*) or the time of day. However, there are other potential reasons why differences in wind speed occur. Although the most homogeneous direction was selected (000°–045°), the difference in source area between the sensor used for extrapolation ($z = 48.9$ m) and lidar ($z = 126$ – 216 m) implies that the flow is likely in equilibrium with different upwind surfaces. Accounting for the changes in upwind surface morphology may therefore improve wind-speed estimation. The concept of a blending height (z_b) above which the wind-speed profile is respond to an entire heterogeneous surface (Grimmond and Oke 1999; Roth 2000; Barlow 2014) may support this hypothesis, however there is uncertainty in the determination of z_b (Grimmond and Oke 1999; Grimmond et al. 2004; Barlow 2014). A further consideration is the depth of the ISL

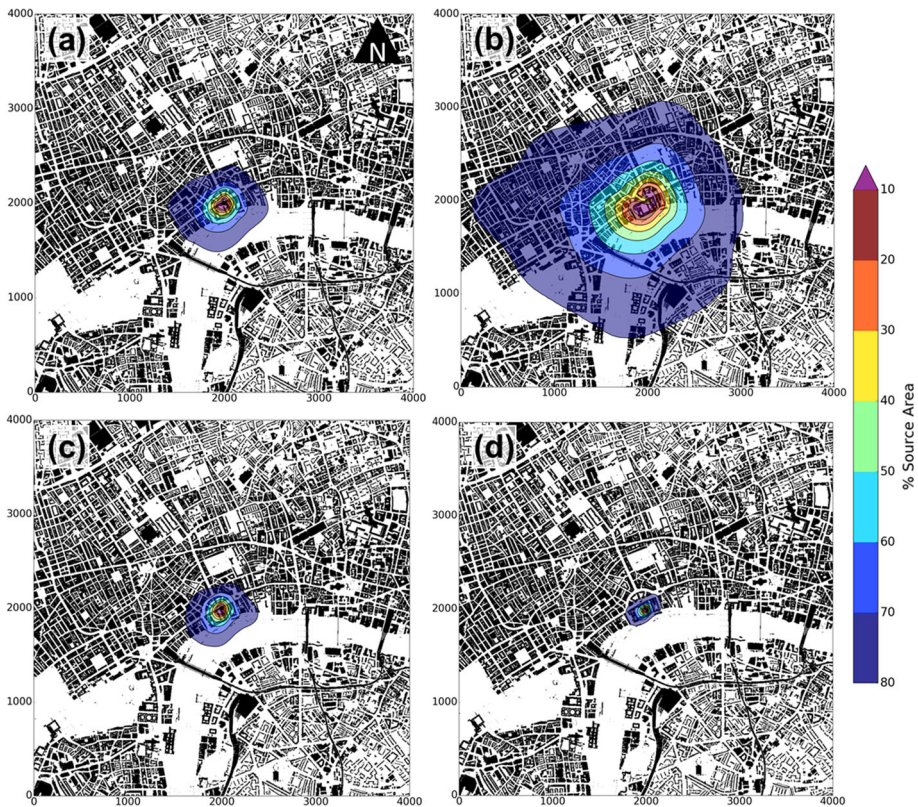


Fig. 8 Integrated annual 80% source areas at the: **a, b** KSSW, **c** KSS and **d** KSK sites, normalized for the observation period (Table 3, from 30-min averaged observations, Sect. 3.2.2). Source areas are determined using the [Kormann and Meixner \(2001\)](#) analytical footprint model with aerodynamic parameters from the **a, c, d** *Mho* and **b** *Mac* morphometric methods. Cumulative source areas are shaded with 10% contours demarcated (black lines). Map units are metres

and therefore the theoretical validity of the logarithmic wind-speed profile to the heights assessed. However, the comparison was limited to daytime profiles below 216 m and the individual observed wind-speed profiles (Fig. 7a) indicate profiles compared are logarithmic in nature.

7 Source-Area Modelling Using the Morphometric Methods

The EC turbulent flux source area is a function of the aerodynamic parameters and meteorological conditions. The surface characteristics within the source area of an EC measurement are of interest, not only for explaining the flux partitioning ([Kotthaus and Grimmond 2014b](#)) and CO₂ exchange ([Ward et al. 2015](#)), but also for determination of aerodynamic parameters themselves (which is why the iterative methodology is used, Sect. 4.3.3). To assess the impact of the aerodynamic parameters determined by each morphometric method on the modelled source area, a footprint climatology for each method is generated at each site. The sum of all 80% cumulative weight source areas (Sect. 4.3.3) for each 30-min mean observation is normalized by the total sum of weights. As different years are analyzed (2014 at the KSSW

site; 2011 at the KSS and KSK sites) direct comparison is not undertaken. However, the lower the height of the sensor, the smaller the modelled source area (i.e. KSSW, KSS to KSK site—Fig. 8). In addition, the source-area climatology is biased towards the dominant south-westerly wind direction. The greatest wind speeds from the south-west, as well as more frequent neutral conditions, means the source areas also extend furthest upwind in this direction.

The surface characteristics weighted by the footprint climatology (Fig. 8, Table 4) are different to those of the unweighted surrounding 1-km radius (Table 3). The similar measurement heights at the KSSW and KSS sites implies that their footprint climatology characteristics are similar. In comparison, the lower siting of the KSK site produces a smaller source area (Fig. 8d), which is predominantly built and paved, with only 0.7% water. A wide range of geometric parameters occur in the source areas (Table 4a), which modifies the ratio of the measurement height to roughness-element heights. The median H_{av} for all sites is approximately 23 m and roughness-element height varies between 9.2 and 9.5 m (median σ_H). The smallest H_{av} recorded is 10 m, in which case the measurement height = $5H_{av}$ and well above the RSL (Sect. 2.1). However, some source areas have $H_{av} = 30$ m, in which case measurements are at $z = 1.67H_{av}$ and therefore more likely influenced by roughness-element wakes.

The source areas modelled using the RE_{av} methods are larger than the RE_{var} methods because the greater zero-plane displacement of the latter leads to a smaller effective height of the measurements. For example, Mho_{zd} is typically twice Mac_{zd} and a comparison of the source areas modelled at the KSSW site using each respective method demonstrates this difference (Fig. 8a, b). The upwind distance contributing to the 80% cumulative source area is consistently over three times further in all directions for the Mac method. This influences the surface characteristics that are determined for the source area. For example, the parks to the south-west of the sites (Sect. 4.1) are not within the Mho method source area, but fall within the 80% of the Mac method, explaining the larger proportion of vegetated land cover

Table 4 Characteristics of the annual source area (80%) for each site (Fig. 8): (a) Geometric parameters and (b) Surface cover. See Tables 1 and 3 for measurement time periods and method/ geometry abbreviations

Site	Morphometric method	H_{av} (m)	λ_p	λ_f	H_{max} (m)	σ_H (m)
(a) Geometric parameters: median (<i>min, max</i>)						
KSSW	<i>Mho</i>	23.01 (9.80, 30.14)	0.42 (0.21, .90)	0.49 (0.12, 3.01)	52.11 (31.97, 184.73)	9.50 (4.71, 16.29)
	<i>Mac</i>	21.30 (9.30, 29.93)	0.40 (0.16, 0.79)	0.43 (0.04, 2.71)	77.80 (32.64, 184.73)	10.21 (4.53, 17.63)
KSS	<i>Mho</i>	23.41 (10.76, 30.74)	0.44 (0.25, 0.84)	0.48 (0.11, 2.80)	46.10 (34.42, 184.73)	9.22 (5.67, 13.96)
KSK	<i>Mho</i>	23.38 (18.38, 29.76)	0.55 (0.32, 0.99)	0.63 (0.19, 2.27)	39.51 (28.60, 184.73)	8.48 (3.66, 13.59)
Site		Built	Paved	Grass	Trees and shrubs	Water
(b) Surface Cover (%) for 80% source area						
KSSW	<i>Mho</i>	42	48	3	1	6
	<i>Mac</i>	40	39	4	3	14
KSS	<i>Mho</i>	45	48	2	1	4
KSK	<i>Mho</i>	57	42	1	0	0

(grass and trees) using the latter (Table 4b). Geometric parameters are also influenced, which subsequently influence morphometrically-determined aerodynamic parameters. For example, the larger source area modelled using aerodynamic parameters from the *Mac* method gives a relatively larger H_{max} , σ_H , λ_p , λ_f and lower H_{av} than within the *Mho* method source area (Table 4a).

8 Conclusions

Morphometric and anemometric analysis of aerodynamic parameters for three adjacent sites in Central London give estimates of zero-plane displacement (z_d) between 5 and 45 m and aerodynamic roughness length (z_0) between 0.1 and 5 m. A source-area footprint model (Kormann and Meixner 2001) is used to apply the morphometric methods in an iterative procedure. Although a first-order estimate of z_d and z_0 is required, the final z_d and z_0 values are similar, independent of the initial estimation. This conclusion is true for another source-area model (Kljun et al. 2015), indicating that an iterative procedure removes the need for initial site specific values. This saves time and also ensures more appropriate values of the aerodynamic parameters and source area dimensions.

Two methods that rely on surface-layer scaling during unstable conditions are used to determine z_d from observations (Rotach 1994; Toda and Sugita 2003). The methods, not obviously sensitive to the initial z_d used to define stability, agree that z_d is larger than the average roughness-element height (H_{av}) in the surrounding 1-km fetch. Although this conclusion is supported by the literature, previously these values have been considered unreasonably large (Grimmond et al. 1998, 2002; Feigenwinter et al. 1999; Kanda et al. 2002; Tsuang et al. 2003; Christen 2005; Chang and Huynh 2007).

Morphometric methods to determine z_d can be split into two types based on the attributes of roughness-element height used, i.e. the average height (RE_{av}) or the variability/ maximum height (RE_{var}). The zero-plane displacement determined by the RE_{var} methods is consistently larger than H_{av} and twice the magnitude of that from the RE_{av} methods, which is approximately $0.7H_{av}$. A simple doubling of z_d determined by a rule-of-thumb morphometric method that is based only upon average roughness-element height, brought values more in line with the z_d values determined using the RE_{var} methods.

There is agreement between anemometric methods and the morphometric methods which consider height variability, that z_d is larger than H_{av} . This conclusion is supported by numerical and physical experiments (e.g. Jiang et al. 2008; Hagishima et al. 2009; Zaki et al. 2011; Millward-Hopkins et al. 2011; Tanaka et al. 2011; Kanda et al. 2013) indicating the taller roughness elements in a heterogeneous mix exert a disproportionate amount of drag on the flow (Xie et al. 2008; Mohammad et al. 2015b) lifting the drag-profile centroid (Jackson 1981) above $z = H_{av}$. The results verify Kanda et al.'s (2013) proposition that the maximum height (H_{max}) is a more suitable scaling parameter for z_d and the standard deviation of the roughness-element height (σ_H) (also used by Millward-Hopkins et al. 2011) is useful to parametrize roughness-element height heterogeneity. This conclusion has implications for the interpretation of output from anemometers (and potentially other meteorological sensors) in the heterogeneous urban environment. Sensors may need to be located higher above roughness elements to provide a local-scale (or neighbourhood), rather than microscale, measurement.

Morphometric-based z_0 values are consistently larger than the anemometric z_0 by 2–3 m. Although the two classes of morphometric methods (RE_{av} and RE_{var}) do not demonstrate an obvious difference, root-mean-square error analysis demonstrates the RE_{var} methods are most

similar to observations. Individual RE_{av} methods consistently result in the largest (Bottema and Mestayer 1998) and smallest (Macdonald et al. 1998) z_0 values.

The ability of each method to correctly estimate wind speed with height is assessed using locally determined aerodynamic parameters and the logarithmic wind law. Wind speeds observed with Doppler lidar (up to 200 m above the canopy) are underestimated with the RE_{av} morphometric methods (median underestimation: $1.5 - 2.9 \text{ m s}^{-1}$ for average wind speeds: $10.4 - 11.4 \text{ m s}^{-1}$). Whereas, the larger z_d determined using the RE_{var} methods provides similar results to the observations (median differences $< 0.62 \text{ m s}^{-1}$), demonstrating the importance of considering roughness-element height heterogeneity when estimating the wind-speed profile.

The modelled eddy-covariance source area is typically a third (or smaller) of the size when RE_{var} methods are used, as the effective measurement height (i.e. with z_d accounted for) tends to be half that of the RE_{av} methods. This has implications for land-cover and geometric parameters determined for a source area and their subsequent uses.

The tools for morphometric determination of z_d and z_0 (including the two footprint models used) are available in the Urban Multi-Scale Environmental Predictor (UMEP, <http://www.urban-climate.net/umep/UMEP>, Lindberg et al. 2016), which is an extension to the open source geographical information software QGIS.

Acknowledgements This work is funded by a NERC CASE studentship in partnership with Risk Management Solutions (NE/L00853X/1) and Newton Fund/Met Office CSSP China. Observations used in these analyses were funded from NERC ClearfLo (KCL and Reading), EUf7 BRIDGE, H2020 UrbanFluxes, EPSRC ACTUAL, KCL and University of Reading. The numerous people who maintain the daily operations, collection and processing of data for the London Urban Meteorological Observatory network (<http://micromet.reading.ac.uk/>) including Will Morrison and Kjell zum Berge are gratefully acknowledged, along with King's College London for provision of the sites.

Open Access This article is distributed under the terms of the Creative Commons Attribution 4.0 International License (<http://creativecommons.org/licenses/by/4.0/>), which permits unrestricted use, distribution, and reproduction in any medium, provided you give appropriate credit to the original author(s) and the source, provide a link to the Creative Commons license, and indicate if changes were made.

Appendix

See Table 5.

Table 5 Methods in the literature (ordered by date) used to calculate the zero-plane displacement (z_d) and aerodynamic roughness length (z_0) from (a) morphometric and (b) anemometric data with the stability conditions required

Reference	Background to method
(a) Morphometric method	
Kutzbach (1961)	Bushel baskets on frozen lake
Lettau (1969)	Wind-tunnel and Kutzbach (1961) data
Fang and Sill (1992)	Wind-tunnel experiments
Kondo and Yamazawa (1986)	Two urban districts of Japan
Counihan (1971)	Regular arrays of cubic blocks wind-tunnel data
Theurer (1993)	Field experiments and wind-tunnel data
*Raupach (1994) Rau	Wind-tunnel and rough vegetated surface data

Table 5 continued

Reference	Background to method		
Bottema (1995, 1997)	Regular, staggered and varying density array of blocks wind-tunnel data		
* Bottema and Mestayer (1998) <i>Bot</i>	Simplification of Bottema (1995, 1997) for use in urban areas		
* Macdonald et al. (1998) <i>Mac</i>	From fundamental principles and wind-tunnel data (Hall et al. (1996))		
* Grimmond and Oke (1999) <i>RT</i>	Rule-of-thumb from synthesis of wind-tunnel and field results		
Kastner-Klein and Rotach (2004)	Scaled model of Nantes, France, wind-tunnel data		
Nakayama et al. (2011)	Large-eddy simulation (LES) using various building arrays		
Millward-Hopkins et al. (2011)	Quasi-empirical modelling and development of previous models		
* Millward-Hopkins et al. (2011) <i>Mho</i>	Simplification of Millward-Hopkins et al. (2011) using elevation data from Leeds, UK		
* Kanda et al. (2013) <i>Kan</i>	LES with explicitly resolved buildings in Tokyo, Japan		
Method	Reference	Anemometric data required	Stability
(b) Anemometric method			
z_0			
Standard deviation	Beljaars (1987)	Single level, fast or slow response	Neutral
*Eddy covariance	Grimmond et al. (1998) EC	Single level, fast response	Neutral
z_d			
*Temperature variance	Rotach (1994) TVM	Single level, fast response	Unstable
*Vertical wind variance	Toda and Sugita (2003) WVM	Single level, fast response	Unstable
Spectral	Christen (2005)	Single level, fast response	Neutral
z_0 and z_d			
Profile	Lettau (1957)	Profile, fast or slow response	Neutral
Regressed profile	Schmidt (1998)	Profile, fast or slow response	Neutral
Least-squares	Martano (2000)	Single level, fast response	All

Methods used in this study are indicated (*) and have their abbreviation used in the Reference column

References

- Arnfield AJ (2003) Two decades of urban climate research: a review of turbulence, exchanges of energy and water, and the urban heat island. *Int J Climatol* 23:1–26
- Barlow JF (2014) Progress in observing and modelling the urban boundary layer. *Urban Clim* 10:216–240
- Barlow JF, Dobre A, Smalley R, Arnold S, Tomlin A, Belcher SE (2009) Referencing of street-level flows measured during the DAPPLE 2004 campaign. *Atmos Environ* 43:5536–5544
- Bates DM, Watts DG (1988) Nonlinear regression: iterative estimation and linear approximations. In: Bates DM, Watts DG (eds) *Nonlinear regression analysis and its applications*. Wiley, Hoboken, 365 pp
- Beljaars AC (1987) The measurement of gustiness at routine wind stations: a review. *R Neth Meteorol Inst Sci Rep WR-87-11* (WMO Instr. Meth. Obs. Rep. 31), 50 pp
- Björkegren A, Grimmond C, Kotthaus S, Malamud B (2015) CO₂ emission estimation in the urban environment: measurement of the CO₂ storage term. *Atmos Environ* 122:775–790
- Bottema M (1995) Aerodynamic roughness parameters for homogeneous building groups—part 2: results. *Ecole Centrale de Nantes, France Document SUB-MESO #23*
- Bottema M (1997) Urban roughness modelling in relation to pollutant dispersion. *Atmos Environ* 31:3059–3075
- Bottema M, Mestayer PG (1998) Urban roughness mapping-validation techniques and some first results. *J Wind Eng Ind Aerodyn* 74:163–173
- Britter R, Hanna S (2003) Flow and dispersion in urban areas. *Annu Rev Fluid Mech* 35:469–496
- Chang S, Huynh G (2007) A comparison of roughness parameters for Oklahoma City from different evaluation methods. *AMS 7th symposium on the Urban environment* 9.2. https://ams.confex.com/ams/7Coastal7Urban/techprogram/paper_126674.htm. Accessed 1 April 2017
- Cheng H, Castro IP (2002) Near wall flow over urban-like roughness. *Boundary-Layer Meteorol* 104:229–259
- Cheng H, Hayden P, Robins A, Castro I (2007) Flow over cube arrays of different packing densities. *J Wind Eng Ind Aerodyn* 95:715–740
- Christen A (2005) Atmospheric turbulence and surface energy exchange in urban environments: results from the Basel Urban Boundary Layer Experiment (BUBBLE). Atmospheric turbulence and surface energy exchange in urban environments: results from the Basel Urban Boundary Layer Experiment (BUBBLE), Doctoral thesis, Department of Science, University of Basel, Switzerland
- Claus J, Coceal O, Thomas TG, Branford S, Belcher S, Castro IP (2012) Wind-direction effects on urban-type flows. *Boundary-Layer Meteorol* 142:265–287
- Cook NJ (1997) The Deaves and Harris ABL model applied to heterogeneous terrain. *J Wind Eng Ind Aerodyn* 66:197–214
- Counihan J (1971) Wind tunnel determination of the roughness length as a function of the fetch and the roughness density of three-dimensional roughness elements. *Atmos Environ* 5:637–642
- De Bruin H, Verhoef A (1999) Reply to the Comments on ‘a new Method to Determine the Zero-Plane Displacement’, by Zhang and Park. *Boundary-Layer Meteorol* 91:141–143
- Deaves D, Harris R (1978) A mathematical model of the structure of strong winds. *Construction Industry Research and Information Association Report number 76*, London, England
- Drew D, Barlow J, Cockerill T (2013) Estimating the potential yield of small wind turbines in urban areas: a case study for Greater London, UK. *J Wind Eng Ind Aerodyn* 115:104–111
- Emeis S, Baumann-Stanzer K, Piringer M, Kallistratova M, Kouznetsov R, Yushkov V (2007) Wind and turbulence in the urban boundary layer-analysis from acoustic remote sensing data and fit to analytical relations. *Meteorol Z* 16:393–406
- Evans S (2009) 3D cities and numerical weather prediction models: an overview of the methods used in the LUCID project. UCL Centre for Advanced Spatial Analysis, London
- Fang C, Sill B (1992) Aerodynamic roughness length: correlation with roughness elements. *J Wind Eng Ind Aerodyn* 41:449–460
- Feigenwinter C, Vogt R, Parlou E (1999) Vertical structure of selected turbulence characteristics above an urban canopy. *Theor Appl Climatol* 62:51–63
- Fernando H (2010) Fluid dynamics of urban atmospheres in complex terrain. *Annu Rev Fluid Mech* 42:365–389
- Foken T, Wichura B (1996) Tools for quality assessment of surface-based flux measurements. *Agric For Meteorol* 78:83–105
- Garratt J (1990) The internal boundary layer—a review. *Boundary-Layer Meteorol* 50:171–203
- Giometto M, Christen A, Meneveau C, Fang J, Krafczyk M, Parlange M (2016) Spatial characteristics of roughness sublayer mean flow and turbulence over a realistic urban surface. *Boundary-Layer Meteorol* 160:425–452

- Grimmond CSB, King TS, Roth M, Oke TR (1998) Aerodynamic roughness of urban areas derived from wind observations. *Boundary-Layer Meteorol* 89:1–24
- Grimmond CSB, Oke TR (1999) Aerodynamic properties of urban areas derived from analysis of surface form. *J Appl Meteorol* 38:1262–1292
- Grimmond CSB, Salmond J, Offerle BD, Oke TR, (2002) Local-scale surface flux measurements at a downtown site in Marseille during the ESCOMPTE field Campaign. In: *Proceedings, 4th conference on Urban environment*, Norfolk, USA, 20–24 May 2002, American Meteorological Society, 45 Beacon St., Boston, MA, pp 21–22
- Grimmond CSB, Salmond J, Oke TR, Offerle B, Lemonsu A (2004) Flux and turbulence measurements at a densely built-up site in Marseille: heat, mass (water and carbon dioxide), and momentum. *J Geophys Res Atmos* 109:D24101
- Gryning S, Batchvarova E, Brümmer B, Jørgensen H, Larsen S (2007) On the extension of the wind profile over homogeneous terrain beyond the surface boundary layer. *Boundary-Layer Meteorol* 124:251–268
- Hagishima A, Tanimoto J, Nagayama K, Meno S (2009) Aerodynamic parameters of regular arrays of rectangular blocks with various geometries. *Boundary-Layer Meteorol* 132:315–337
- Hall D, Macdonald JR, Walker S, Spanton AM (1996) Measurements of dispersion within simulated urban arrays—a small scale wind tunnel study. *BRE Client Report*, CR178/96
- Högström U (1996) Review of some basic characteristics of the atmospheric surface layer. *Boundary-Layer Meteorol* 78:215–246
- Hsieh C, Katul GG, Schieldge J, Sigmon J, Knoerr KR (1996) Estimation of momentum and heat fluxes using dissipation and flux-variance methods in the unstable surface layer. *Water Resour Res* 32:2453–2462
- Jachner S, Van den Boogaart G, Petzoldt T (2007) Statistical methods for the qualitative assessment of dynamic models with time delay (R Package qualV). *J Stat Softw* 22:1–30
- Jackson P (1981) On the displacement height in the logarithmic velocity profile. *J Fluid Mech* 111:15–25
- Jiang D, Jiang W, Liu H, Sun J (2008) Systematic influence of different building spacing, height and layout on mean wind and turbulent characteristics within and over urban building arrays. *Wind Struct* 11:275–289
- Kaimal JC, Finnigan JJ (1994) *Atmospheric boundary layer flows: their structure and measurement*. Oxford University Press, Oxford, 289 pp
- Kanda M, Moriwaki R, Roth M, Oke T (2002) Area-averaged sensible heat flux and a new method to determine zero-plane displacement length over an urban surface using scintillometry. *Boundary-Layer Meteorol* 105:177–193
- Kanda M, Inagaki A, Miyamoto T, Gryschka M, Raasch S (2013) A new aerodynamic parametrization for real urban surfaces. *Boundary-Layer Meteorol* 148:357–377
- Kastner-Klein P, Rotach MW (2004) Mean flow and turbulence characteristics in an urban roughness sublayer. *Boundary-Layer Meteorol* 111:55–84
- Kljun N, Calanca P, Rotach MW, Schmid HP (2015) A simple two-dimensional parameterisation for Flux Footprint Prediction (FFP). *Geosci Mod Dev* 8:3695–3713
- Kondo J, Yamazawa H (1986) Aerodynamic roughness over an inhomogeneous ground surface. *Boundary-Layer Meteorol* 35:331–348
- Kormann R, Meixner FX (2001) An analytical footprint model for non-neutral stratification. *Boundary-Layer Meteorol* 99:207–224
- Kotthaus S, Grimmond CSB (2012) Identification of micro-scale anthropogenic CO₂, heat and moisture sources-processing eddy covariance fluxes for a dense urban environment. *Atmos Environ* 57:301–316
- Kotthaus S, Grimmond CSB (2014a) Energy exchange in a dense urban environment—part I: temporal variability of long-term observations in central London. *Urban Clim* 10:261–280
- Kotthaus S, Grimmond CSB (2014b) Energy exchange in a dense urban environment—part II: impact of spatial heterogeneity of the surface. *Urban Clim* 10:281–307
- Kutzbach JE (1961) *Investigations of the modification of wind profiles by artificially controlled surface roughness*. Msc. Thesis. Department of Meteorology, University of Wisconsin-Madison
- Lane S, Barlow JF, Wood CR (2013) An assessment of a three-beam Doppler lidar wind profiling method for use in urban areas. *J Wind Eng Ind Aerodyn* 119:53–59
- Leclerc MY, Foken T (2014) *Footprints in micrometeorology and ecology*. Springer, Berlin 239 pp
- Leonardi S, Castro IP (2010) Channel flow over large cube roughness: a direct numerical simulation study. *J Fluid Mech* 651:519–539
- Lettau H (1957) Compilation of Richardson numbers, classification of profiles and determination of roughness parameters. In: Lettau HH, Davidson B (eds) *Exploring the atmosphere's 1st Mile*, Pergamon Press, London, 376 pp
- Lettau H (1969) Note on aerodynamic roughness-parameter estimation on the basis of roughness-element description. *J Appl Meteorol* 8:828–832

- Li Q, Zhi L, Hu F (2010) Boundary layer wind structure from observations on a 325 m tower. *J Wind Eng Ind Aerodyn* 98:818–832
- Lindberg F, Grimmond CSB (2011) Nature of vegetation and building morphology characteristics across a city: influence on shadow patterns and mean radiant temperatures in London. *Urban Ecosyst* 14:617–634
- Lindberg F, Grimmond CSB, Capel-Timms I, Chang YY, Gabey A, Huang B, Jarvi L, Kent CW, Kokkonen T, Krave N, Olofson F, Onomura S, Sun T, Tan JG, Ward HC, Xue L, zum Berge K (2016) Urban Multi-scale Environmental Predictor (UMEP) Manual. University of Reading UK, University of Gothenburg Sweden, SIMS China. http://urban-climate.net/umep/UMEP_Manual. Accessed 6 Mar 2017
- Liu G, Sun J, Jiang W (2009) Observational verification of urban surface roughness parameters derived from morphological models. *Meteorol Appl* 16:205–213
- Macdonald R, Griffiths R, Hall D (1998) An improved method for the estimation of surface roughness of obstacle arrays. *Atmos Environ* 32:1857–1864
- Macdonald R (2000) Modelling the mean velocity profile in the urban canopy layer. *Boundary-Layer Meteorol* 97:25–45
- Martano P (2000) Estimation of surface roughness length and displacement height from single-level sonic anemometer data. *J Appl Meteorol* 39:708–715
- Millward-Hopkins J, Tomlin A, Ma L, Ingham D, Pourkashanian M (2011) Estimating aerodynamic parameters of urban-like surfaces with heterogeneous building heights. *Boundary-Layer Meteorol* 141:443–465
- Mohammad A, Zaki S, Hagishima A, Ali M (2015a) Determination of aerodynamic parameters of urban surfaces: methods and results revisited. *Theor Appl Climatol* 3:635–649
- Mohammad AF, Zaki SA, Ali MSM, Aya H, Razak AA, Shirakashi M, Arai N (2015b) Large eddy simulation of wind pressure distribution on heterogeneous buildings in idealised urban models. *Energy Proc* 78:3055–3060
- Moncrieff J, Clement R, Finnigan J, Meyers T (2004) Averaging, detrending, and filtering of eddy covariance time series. In: Lee X, Massman W, Law B (eds) *Handbook of micrometeorology*. Springer, Netherlands, 250 pp
- Nakayama H, Takemi T, Nagai H (2011) LES analysis of the aerodynamic surface properties for turbulent flows over building arrays with various geometries. *J Appl Meteorol Climatol* 50:1692–1712
- Oke TR (1987) *Boundary layer climates*, 2nd edn. Wiley, New York, 435 pp
- Oke TR (2007) Siting and exposure of meteorological instruments at urban sites. In: Borrego C, Norman AL (eds) *Air pollution modelling and its application XVII*. Springer, Berlin, 744 pp
- Padhra A (2010) Estimating the sensitivity of urban surface drag to building morphology, Doctoral thesis, Department of Meteorology, University of Reading, England
- Peña A, Gryning S, Mann J, Hasager CB (2010) Length scales of the neutral wind profile over homogeneous terrain. *J Appl Meteorol Climatol* 49:792–806
- Ratti C, Di Sabatino S, Britter R (2006) Urban texture analysis with image processing techniques: winds and dispersion. *Theor Appl Climatol* 84:77–90
- Ratti C, Di Sabatino S, Britter R, Brown M, Caton F, Burian S (2002) Analysis of 3-D urban databases with respect to pollution dispersion for a number of European and American cities. *Water Air Soil Pollut Focus* 2:459–469
- Raupach M (1994) Simplified expressions for vegetation roughness length and zero-plane displacement as functions of canopy height and area index. *Boundary-Layer Meteorol* 71:211–216
- Raupach M, Antonia R, Rajagopalan S (1991) Rough-wall turbulent boundary layers. *Appl Mech Rev* 44:1–25
- Rooney G (2001) Comparison of upwind land use and roughness length measured in the urban boundary layer. *Boundary-Layer Meteorol* 100:469–485
- Rotach MW (1994) Determination of the zero plane displacement in an urban environment. *Boundary-Layer Meteorol* 67:187–193
- Rotach MW (1999) On the influence of the urban roughness sublayer on turbulence and dispersion. *Atmos Environ* 33:4001–4008
- Roth M (2000) Review of atmospheric turbulence over cities. *Q J R Meteorol Soc* 126:941–990
- Schaudt K (1998) A new method for estimating roughness parameters and evaluating the quality of observations. *J Appl Meteorol* 37:470–476
- Schotanus P, Nieuwstadt F, De Bruin H (1983) Temperature measurement with a sonic anemometer and its application to heat and moisture fluxes. *Boundary-Layer Meteorol* 26:81–93
- Sedefian L (1980) On the vertical extrapolation of mean wind power density. *J Appl Meteorol* 19:488–493
- Sorbján Z (1989) *Structure of the atmospheric boundary layer*. Prentice Hall, Old Tappan, 315 pp
- Stathopoulos T (2006) Pedestrian level winds and outdoor human comfort. *J Wind Eng Ind Aerodyn* 94:769–780
- Stewart ID (2011) A systematic review and scientific critique of methodology in modern urban heat island literature. *Int J Climatol* 31:200–217

- Stewart ID, Oke TR (2012) Local climate zones for urban temperature studies. *Bull Am Meteorol Soc* 93:1879–1900
- Tanaka S, Sugawara H, Narita K, Yokoyama H, Misaka I, Matsushima D (2011) Zero-plane displacement height in a highly built-up area of Tokyo. *Sola* 7:93–96
- Tennekes H (1973) The logarithmic wind profile. *J Atmos Sci* 30:234–238
- Theurer W (1993) Dispersion of ground level emissions in complex built-up areas, Doctoral thesis, Department of Architecture, University of Karlsruhe, Germany
- Tieleman HW (2008) Strong wind observations in the atmospheric surface layer. *J Wind Eng Ind Aerodyn* 96:41–77
- Tillman J (1972) The indirect determination of stability, heat and momentum fluxes in the atmospheric boundary layer from simple scalar variables during dry unstable conditions. *J Appl Meteorol* 11:783–792
- Toda M, Sugita M (2003) Single level turbulence measurements to determine roughness parameters of complex terrain. *J Geophys Res Atmos* 108:1984–2012:108
- Tominaga Y, Stathopoulos T (2013) CFD simulation of near-field pollutant dispersion in the urban environment: a review of current modeling techniques. *Atmos Environ* 79:716–730
- Tsuang B, Tsai J, Lin M, Chen C (2003) Determining aerodynamic roughness using tethered sonde and heat flux measurements in an urban area over a complex terrain. *Atmos Environ* 37:1993–2003
- United Nations Publications (2014) World urbanization prospects 2014: highlights. United Nations Publications, New York
- Van Dijk A, Moene A, De Bruin H, Meteorology and Air Quality Group (2004) The principles of surface flux physics: theory, practice and description of the ECPACK library. Wageningen University, Wageningen, 99 pp
- Verkaik J (2000) Evaluation of two gustiness models for exposure correction calculations. *J Appl Meteorol* 39:1613–1626
- Walker GR, Mason MS, Crompton RP, Musulin RT (2016) Application of insurance modelling tools to climate change adaptation decision-making relating to the built environment. *Struct Infrastruct Eng* 12:450–462
- Ward H, Kotthaus S, Grimmond C, Borgeggen A, Wilkinson M, Morrison W, Evans J, Morison J, Iamarino M (2015) Effects of urban density on carbon dioxide exchanges: observations of dense Urban, Suburban and Woodland areas of Southern England. *Environ Pollut* 198:186–200
- Wieringa J, Davenport AJ, Grimmond CSB, Oke TR (2001) New revision of Davenport roughness classification. In: *Proceedings of 3EACWE*, Eindhoven, The Netherlands, pp 285–292
- Wieringa J (1993) Representative roughness parameters for homogeneous terrain. *Boundary-Layer Meteorol* 63:323–363
- Wyngaard J, Coté O, Izumi Y (1971) Local free convection, similarity, and the budgets of shear stress and heat flux. *J Atmos Sci* 28:1171–1182
- Xie Z, Coceal O, Castro IP (2008) Large-eddy simulation of flows over random urban-like obstacles. *Boundary-Layer Meteorol* 129:1–23
- Zaki SA, Hagishima A, Tanimoto J, Ikegaya N (2011) Aerodynamic parameters of urban building arrays with random geometries. *Boundary-Layer Meteorol* 138:99–120