

Remote sensing of intertidal morphological change in Morecambe Bay, U.K., between 1991 and 2007

Article

Accepted Version

Mason, D. C. ORCID: <https://orcid.org/0000-0001-6092-6081>,
Scott, T. R. and Dance, S. L. ORCID: <https://orcid.org/0000-0003-1690-3338> (2010) Remote sensing of intertidal morphological change in Morecambe Bay, U.K., between 1991 and 2007. *Estuarine, Coastal and Shelf Science*, 87 (3). pp. 487-496. ISSN 0272-7714 doi: 10.1016/j.ecss.2010.01.015 Available at <https://reading-clone.eprints-hosting.org/4726/>

It is advisable to refer to the publisher's version if you intend to cite from the work. See [Guidance on citing](#).

Published version at: <http://dx.doi.org/10.1016/j.ecss.2010.01.015>

To link to this article DOI: <http://dx.doi.org/10.1016/j.ecss.2010.01.015>

Publisher: Elsevier Ltd

All outputs in CentAUR are protected by Intellectual Property Rights law, including copyright law. Copyright and IPR is retained by the creators or other copyright holders. Terms and conditions for use of this material are defined in the [End User Agreement](#).

www.reading.ac.uk/centaur

CentAUR

Central Archive at the University of Reading

Reading's research outputs online

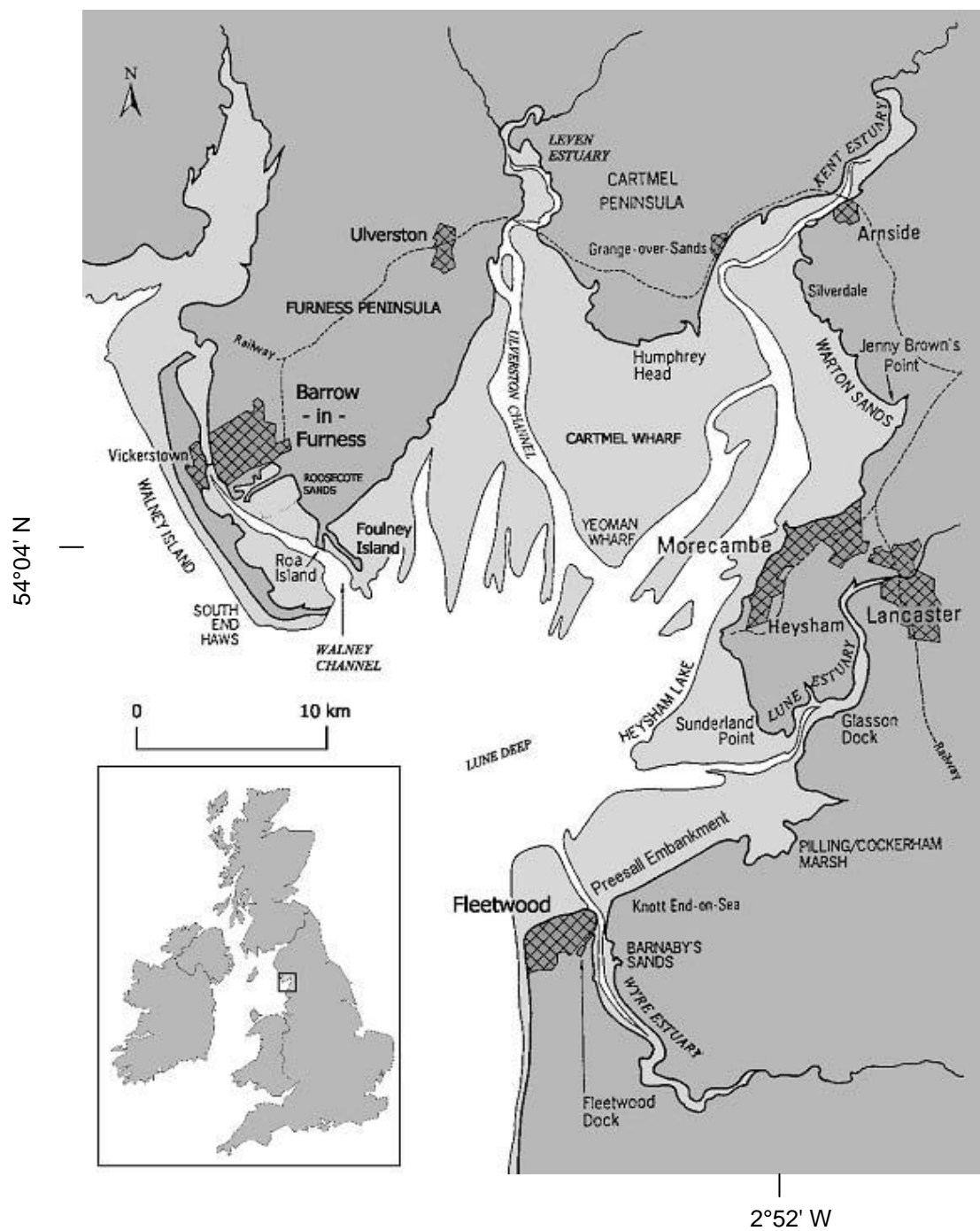


Figure 1.

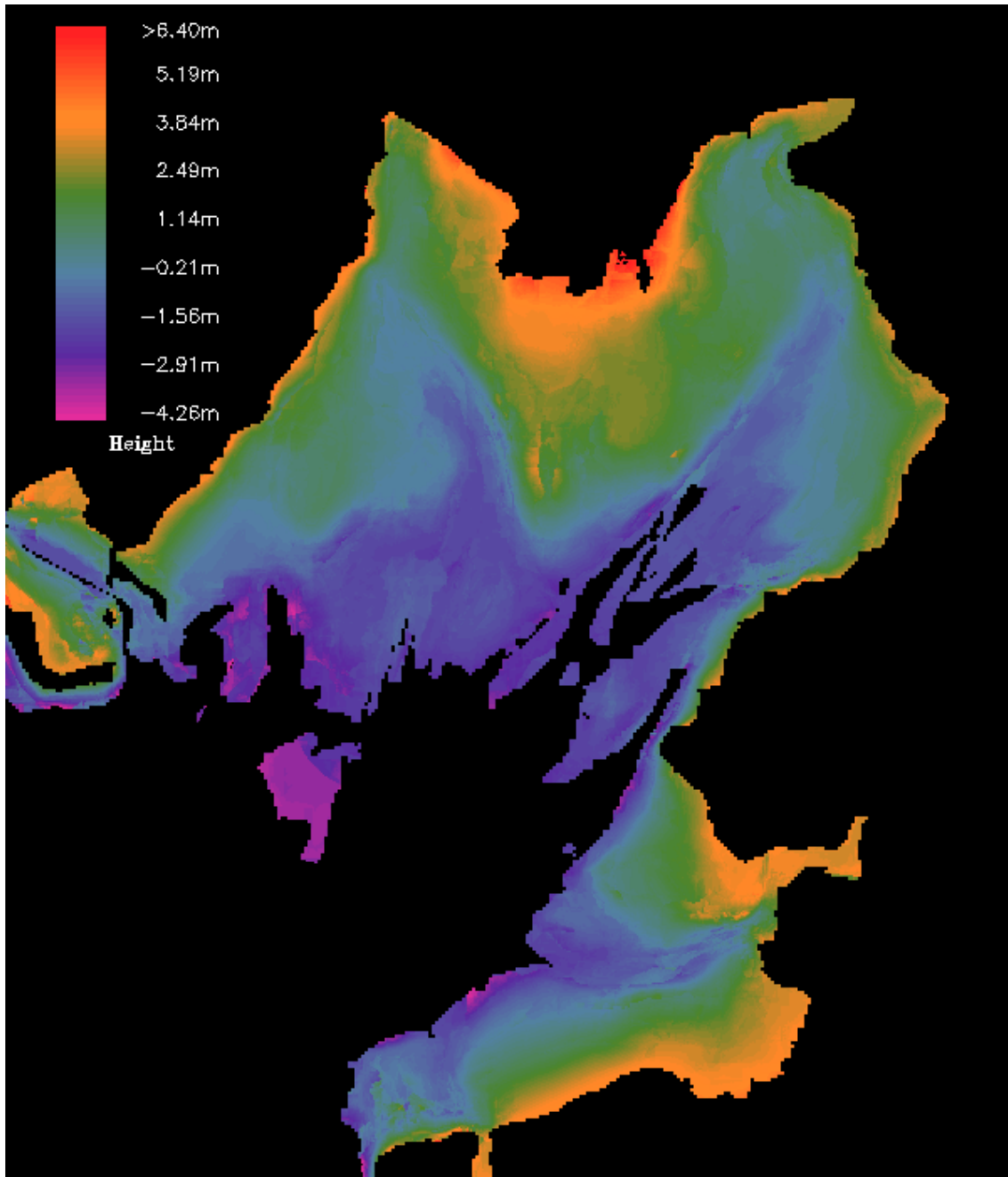


Figure 2(a).

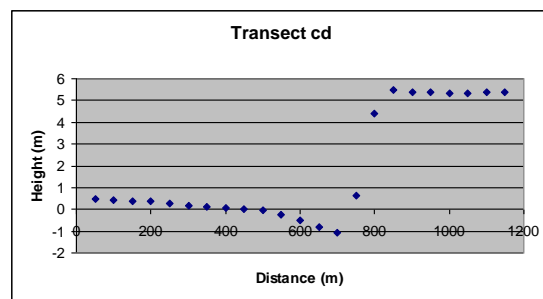
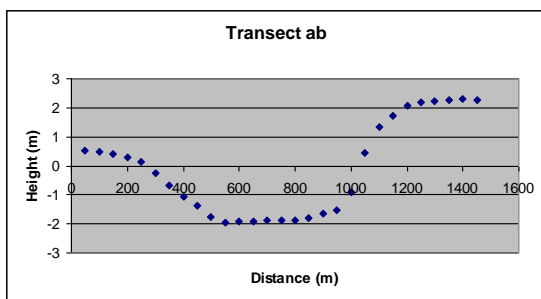
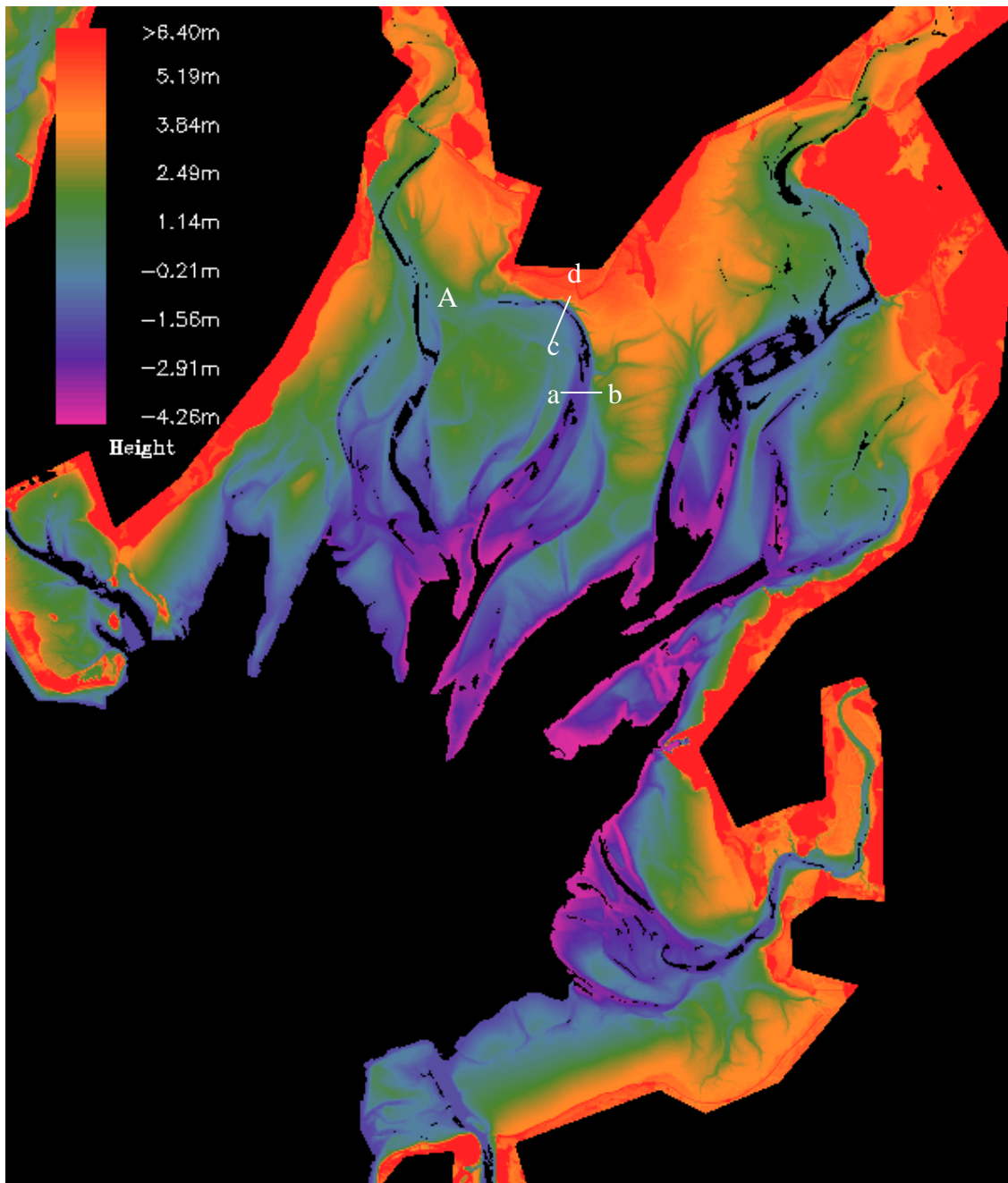


Figure 2(b).

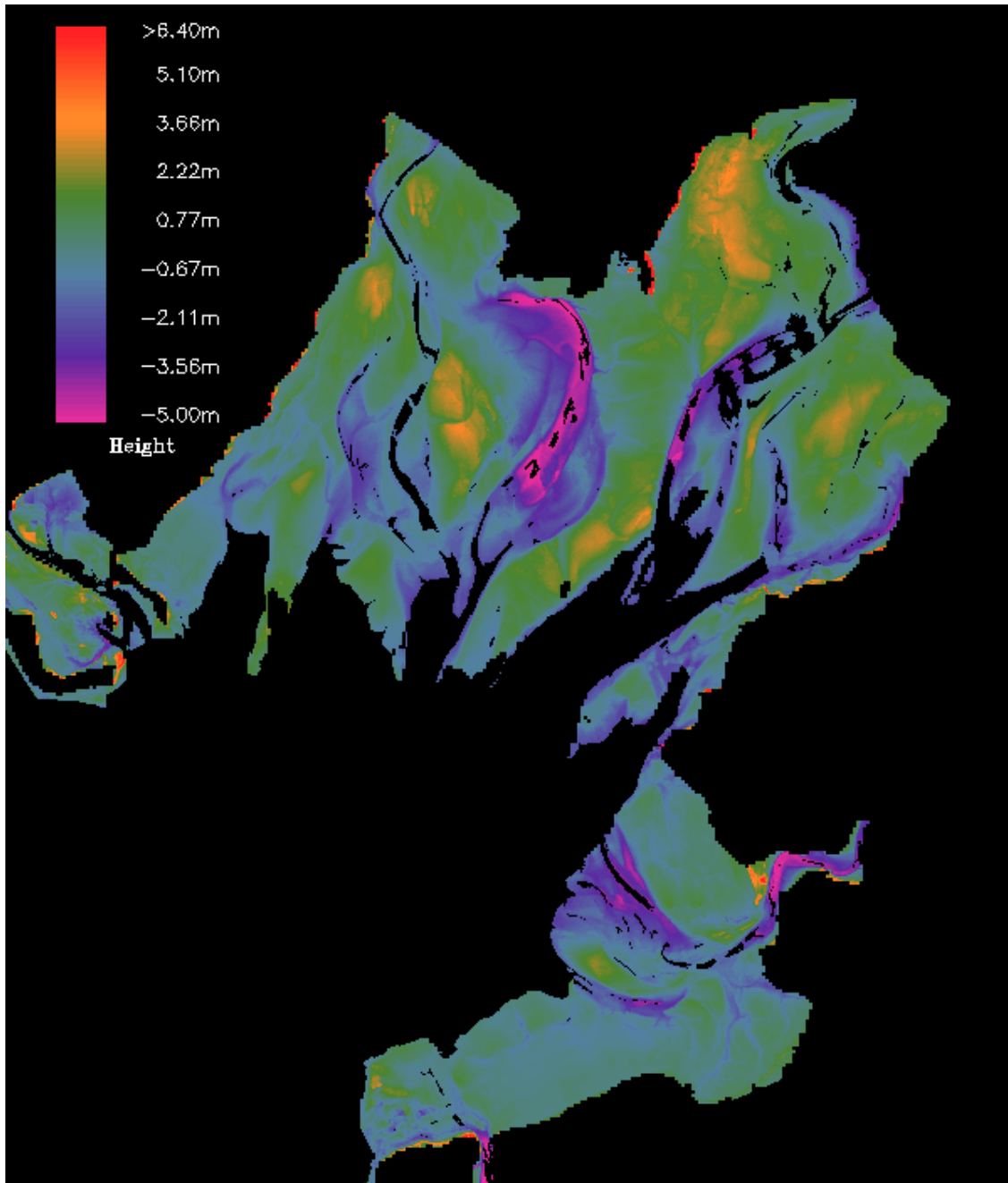
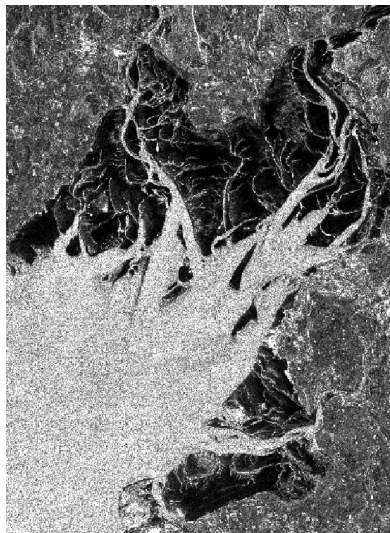
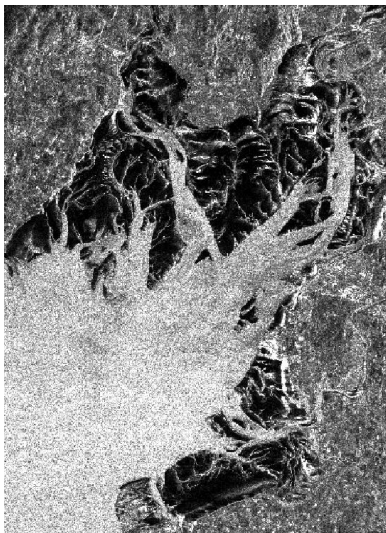


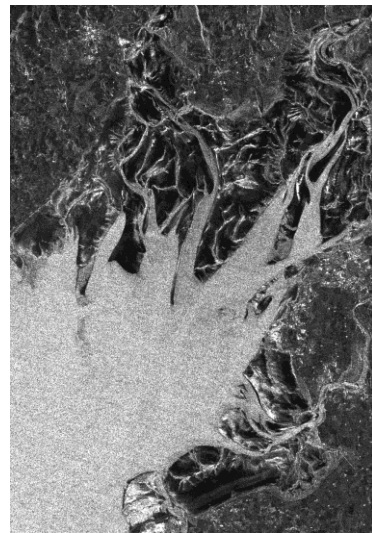
Figure 2(c).



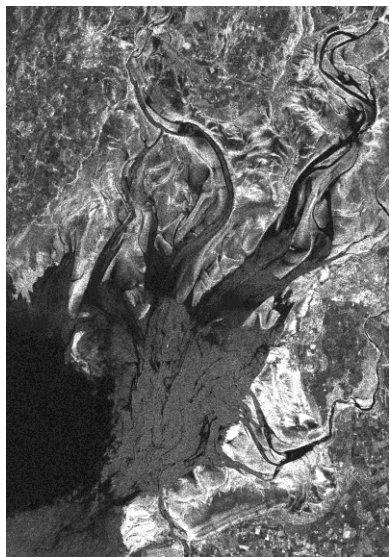
(a)



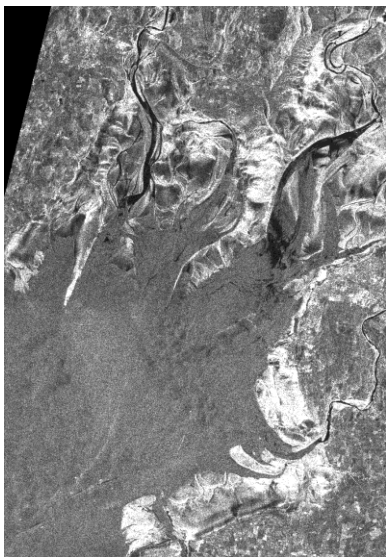
(b)



(c)



(d)

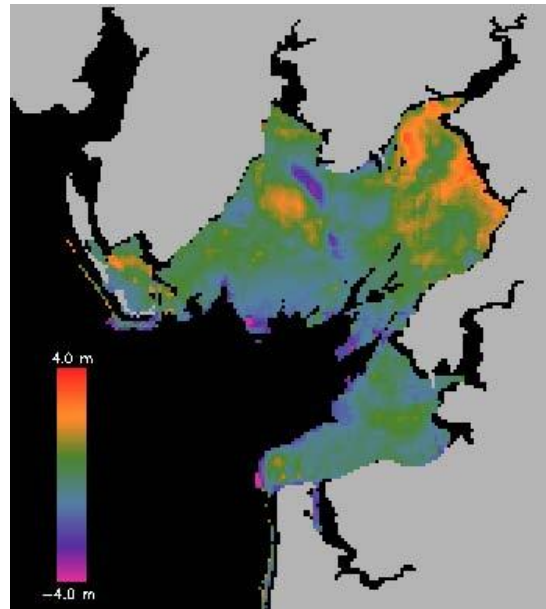


(e)

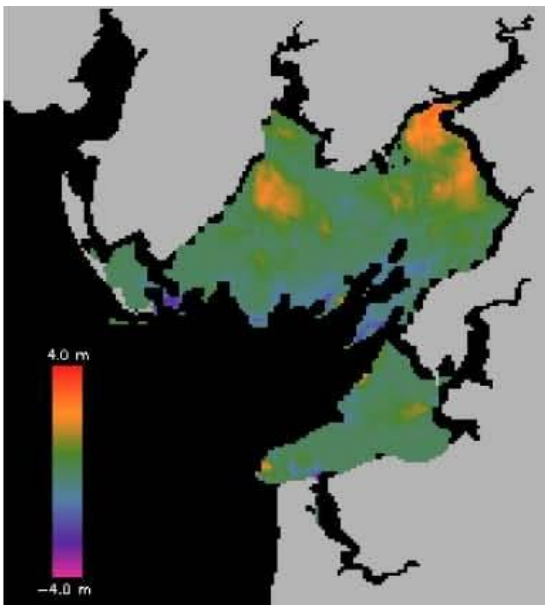


(f)

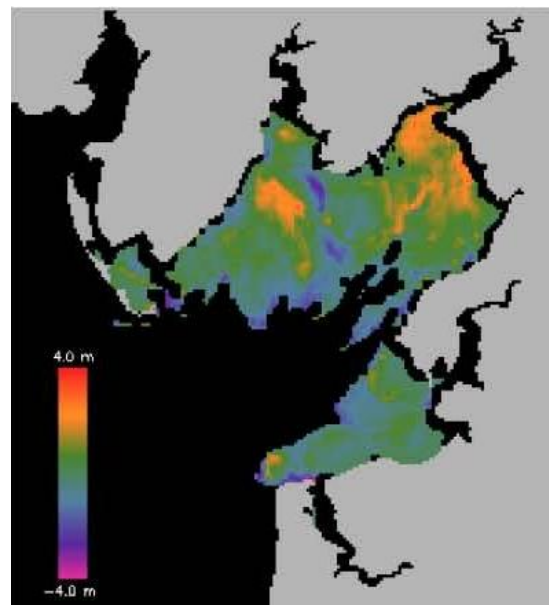
Figure 3.



(a)



(b)



(c)

Figure 4.