

*Phase separated structures in tethered dPS–PMMA copolymer films revealed using X-ray scattering with a novel contrast enhancement agent*

Article

Accepted Version

O'Driscoll, B. M. D., Newby, G. E. and Hamley, I. W. ORCID: <https://orcid.org/0000-0002-4549-0926> (2011) Phase separated structures in tethered dPS–PMMA copolymer films revealed using X-ray scattering with a novel contrast enhancement agent. *Polymer Chemistry*, 2 (3). pp. 619-624. ISSN 1759-9954 doi: <https://doi.org/10.1039/C0PY00289E> Available at <https://centaur.reading.ac.uk/19210/>

It is advisable to refer to the publisher's version if you intend to cite from the work. See [Guidance on citing](#).

To link to this article DOI: <http://dx.doi.org/10.1039/C0PY00289E>

Publisher: Royal Society of Chemistry

All outputs in CentAUR are protected by Intellectual Property Rights law, including copyright law. Copyright and IPR is retained by the creators or other copyright holders. Terms and conditions for use of this material are defined in the [End User Agreement](#).

[www.reading.ac.uk/centaur](http://www.reading.ac.uk/centaur)

## **CentAUR**

Central Archive at the University of Reading

Reading's research outputs online

# Phase Separated Structures in Tethered dPS-PMMA Copolymer Films Revealed using X-ray Scattering with a Novel Contrast Enhancement Agent

Benjamin M.D. O'Driscoll,<sup>\*a</sup> Gemma E. Newby,<sup>b</sup> and Ian W. Hamley<sup>a</sup>

<sup>5</sup> Received (in XXX, XXX) Xth XXXXXXXXXX 200X, Accepted Xth XXXXXXXXXX 200X

First published on the web Xth XXXXXXXXXX 200X

DOI: 10.1039/b000000x

Tethered deuterated polystyrene-*block*-polymethyl methacrylate films have been examined by X-ray scattering both in their native state and following treatment with ruthenium tetroxide. The use  
10 of the stain, while increasing the thickness of the films does not significantly alter the lateral structure or periodicity of the films and provides contrast between the two blocks. Both the periodicity of the films and the structure normal to the surface have been identified following staining. Experiments were also performed on films treated by a solvent exchange process, and the effects of staining on these films is discussed.

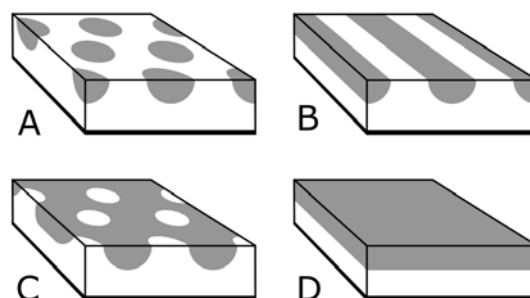
## 15 Introduction

In a previous publication we reported the microphase separation behaviour of various deuterated polystyrene-*block*-polymethyl methacrylate (dPS-*b*-PMMA) films tethered to the surface of silicon wafers.<sup>1</sup> The aim of this work was to  
20 investigate lateral phase microphase separation. Comparison was also made with the self-consistent mean field calculations of Matsen and Griffiths.<sup>2</sup> According to the theoretical model four phases can be formed by tethered diblock films (figure 1): uniform, hexagonal,  
25 stripe and inverse hexagonal; with the phase behaviour controlled by the degree of polymerisation ( $N$ ), the composition ( $f$ ), the Flory-Huggins interaction parameter ( $\chi$ ), the grafting density ( $\sigma$ ), and the surface tension difference between the two blocks ( $\Delta\gamma$ ).<sup>2</sup> The latter two parameters,  
30 which are not required for bulk systems, are needed here as tethering reduces the degrees of freedom of the polymer chains and makes the microphase separation a pseudo 2D process.

Using atomic force microscopy (AFM) all four possible  
35 phases were identified in our previous study.<sup>1</sup> Indirect evidence confirming the 3D structure of the films was also obtained, however fundamentally AFM only examines the surface of the films. In order to directly examine the 3D structure of the films we report here the results of X-ray  
40 scattering measurements on the microphase separated films.

The structure of the films normal to the surface plane is probed by X-ray reflectometry (XR), while the in-plane structure of the films is examined using grazing incidence small-angle X-ray scattering (GISAXS) and scans around  $Q_{xy}$   
45 (at fixed  $Q_z$ ); these are collectively referred to as In-Plane scans.

The films are examined in both their native state and following reaction with a staining agent, ruthenium tetroxide (RuO<sub>4</sub>). This stain has previously been used for transmission  
50 electron microscopy measurements, where it was shown that RuO<sub>4</sub> reacts selectively with polystyrene.<sup>3-6</sup> To the best of our knowledge however it has not previously been used in



**Fig. 1** Four phases of tethered diblock copolymer films: (a) hexagonal, (b) stripe, (c) inverse hexagonal, and (d) uniform

combination with X-ray scattering and as such represents a novel method for improving the contrast in diblock copolymer films.

The scattering experiments were supported by AFM measurements and other techniques that were used to assess the effect of the staining procedure. It has previously been noted that incorporation of ruthenium into the polymer film causes swelling of the polystyrene components of the films.<sup>4</sup> For a macroscopic 3D system this could lead to large-scale  
60 destruction of any ordered structures, however the 2D nature of the systems reported here should allow for expansion of the film without loss of ordering in the plane.

## Experimental

The sample preparation and annealing conditions of the dPS-PMMA-OH films used here have been reported in a previous publication.<sup>1</sup> Each sample was split in two with one half left  
70 unaltered (native) and one half reacted with RuO<sub>4</sub>.

The RuO<sub>4</sub> reaction was performed in a sealed glass container, with the samples being suspended on a stainless steel mesh  
75 approximately 40 mm above 10 mL of a 0.5 wt% solution of RuO<sub>4</sub> in water (Agar). The samples were exposed to the RuO<sub>4</sub> vapour for 30 min under ambient conditions; no further processing was necessary.

The AFM images were collected using a Veeco Explorer AFM

with a 2  $\mu\text{m}$  scanner in non-contact mode. AFM tips (Veeco) with  $k = 20\text{--}80\text{ N/m}$  and  $f_0 = 130\text{--}320\text{ kHz}$  were used with a set-point ratio of 50 – 60 %.

Energy-dispersive X-ray spectroscopy (EDX) measurements were performed using a FEI Quanta FEG 600 Environmental SEM in high vacuum mode.

Ellipsometry measurements were performed at the University of Surrey, UK, on a J.A Woollam ellipsometer.

XR,  $Q_{xy}$  scans and GISAXS were performed on the XMaS beamline (BM28) at the European Synchrotron Radiation Facility, Grenoble, France using a monochromatic X-ray beam with a wavelength of 1.24  $\text{\AA}$ . The samples were enclosed within a beryllium dome and measured under vacuum. The XR and  $Q_{xy}$  scans were measured using an avalanche photodiode point detector, while the GISAXS measurements were performed using a 2D Mar CCD detector, with in-plane profiles being generated by doing sector integrations with the Fit2D program. All of the profiles were normalized by dividing by the profiles generated by a bare silicon surface.

The XR profiles were modelled with the Stochfit<sup>7</sup> and Parratt32 programs (Helmholtz Zentrum, Berlin). The electron density of the silicon wafer substrate was fixed at  $1.995 \times 10^{-5}\text{ \AA}^{-2}$ . Additionally, the thickness (30 nm) and ED ( $2.5 \times 10^{-5}\text{ \AA}^{-2}$ ) of the oxide layer were constrained initially and were only allowed to vary once a suitable fit had been obtained. All other parameters were allowed to vary where appropriate.

## Results and Discussion

As with our previous study,<sup>1</sup> four different dPS-PMMA-OH polymers were used here. The parameters relating to these polymers are shown in table 1. (The subscripts in the polymer designations denote the approximate  $M_n$  of each block.)

**Table 1** Size and composition of the polymers used

Polymer	$M_n / \text{kg.mol}^{-1}$	$f$	$PDI^a$
dPS <sub>13</sub> PMMA <sub>100</sub> OH	113.0	0.10	1.07
dPS <sub>33</sub> PMMA <sub>122</sub> OH	155.0	0.19	1.12
dPS <sub>47</sub> PMMA <sub>135</sub> OH	182.0	0.24	1.14
dPS <sub>62</sub> PMMA <sub>69</sub> OH	131.0	0.45	1.07

<sup>a</sup>  $PDI$  is the polydispersity index.

The polymers were spin-coated onto clean silicon wafers, annealed at 180  $^\circ\text{C}$  and then divided into four sets. The first set, the ‘as cast’ (AC) films, were not treated further and subsequently the majority of polymer in these films is not tethered to the surface and these films are considered to be representative of untethered films.

The second set, the ‘thermally annealed’ (TA) films, were washed with toluene (which removes any untethered polymer) and then annealed a second time at 180  $^\circ\text{C}$ .

The third set, the ‘solvent exchanged – acetone’ (SEA) films, were washed with toluene, immersed in THF and then acetone added until it constituted 75% of the volume. This procedure is analogous to the one used by Zhao et al. and results in the selective precipitation of one block (in this case dPS) while the other block remained solubilised.<sup>8, 9</sup> The films were ultimately removed from the mixed solvent and dried, leading

to collapse of the second block.

A similar procedure was used for the fourth set of samples, the ‘solvent exchanged – cyclohexane’ (SEC) films, but in this case cyclohexane, which selectively precipitates PMMA, was used.

In total 16 different films were produced, with these subsequently being divided into RuO<sub>4</sub> treated and native (unmodified) samples. Table 2 displays thicknesses of these films both natively ( $L_{\text{Nat}}$ ) and RuO<sub>4</sub> treated ( $L_{\text{Ru}}$ ). For the SEA and SEC films the thickness of the film was determined prior to the solvent exchange process. It was not possible to measure a rational film thickness after the solvent exchange as the roughness of the films was significantly increased by this process and consequently thickness data for the RuO<sub>4</sub> treated SEA and SEC films cannot be given.

As can be seen in table 2 there is a noticeable increase in the thickness of the films upon treatment with RuO<sub>4</sub> that equates to almost 50 % on average for the TA films. The thicknesses increase is relatively less for the AC films (at approximately 8 %), which correlates with the lower ruthenium contents of these films.

Notably, for the ruthenium treated AC films a suitable fit could only be obtained using a two-layer model, with the upper layer having a relatively high refractive index and the lower layer having a refractive index similar to the native films (supporting information). These results are consistent with a previous examination of the penetration depth of RuO<sub>4</sub> stains in polyethylene terephthalate films by Haubruge et al.,<sup>3</sup> and indicates that the concentration of the staining agent decreases with increasing depth.

For the TA films, the ruthenium treatment also increased the refractive index of the films, however only a single layer was required to fit these films, implying that the stain is effectively uniform in these films.

Averaged across the whole film it was found that the refractive indexes of the TA films were higher than those of the related the AC films. This implies that the TA films have higher ruthenium contents, as was indeed observed in the EDX results (table 2).

The EDX results also showed that for a given set of films, the total amount of ruthenium present in the sample is proportional to the dPS content.

## AFM Measurements

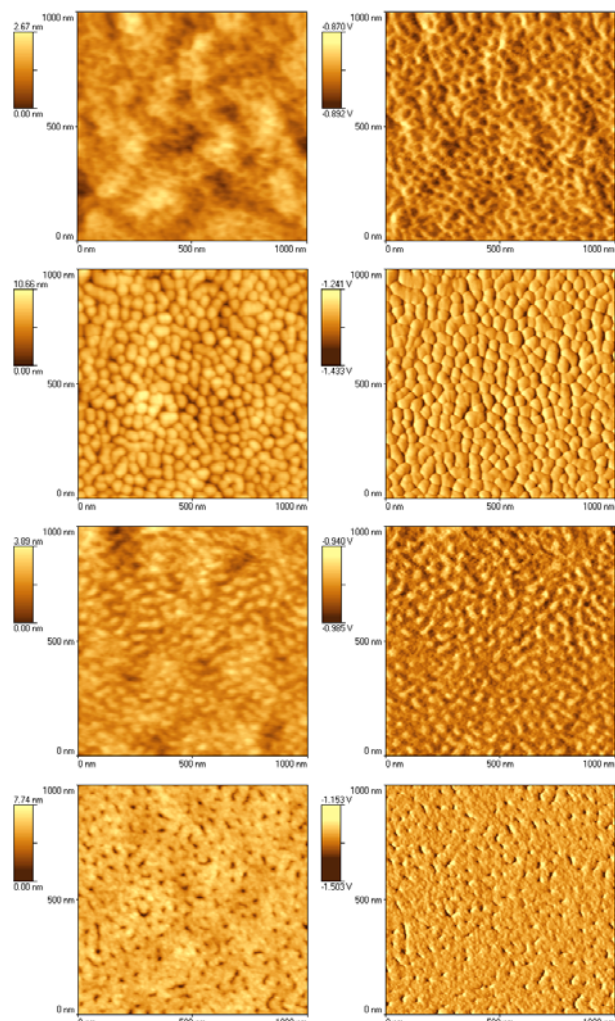
As was mentioned previously, through AFM imaging it was shown that the TA-0.10 film formed the uniform phase, the TA-0.19 and TA-0.24 films the hexagonal phase, and the TA-0.45 film the inverse hexagonal phase.<sup>1</sup> Despite the thickness changes caused by treatment with RuO<sub>4</sub> it is apparent that the staining procedure does not significantly alter the lateral structures or periodicities within these films (figure 2 and supporting information). As proposed in the introduction it is apparent therefore that the expansion of the film is relatively controlled and occurs principally normal to the substrate surface. Indeed it is possible to use the selective expansion of the dPS by RuO<sub>4</sub> to indirectly confirm the phase assignments made in our previous work,<sup>1</sup> as the dPS domains will be uplifted relative to any neighbouring PMMA domains (figure

**Table 2** Ellipsometric and EDX data on the various films

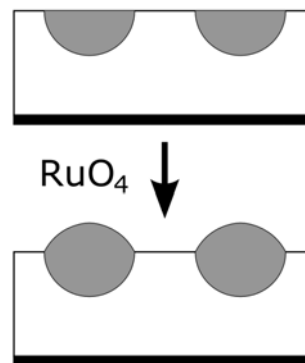
Film	Polymer	$L_{\text{Nat}} / \text{nm}$	$L_{\text{Ru}} / \text{nm}$	$\sigma / \text{nm}^{-2a}$	$\text{Ru} \%^b$
AC-0.10	dPS <sub>13</sub> PMMA <sub>100</sub> OH	64.94 ± 0.36	68.91 ± 0.79	—	2.9
AC-0.19	dPS <sub>33</sub> PMMA <sub>122</sub> OH	65.82 ± 0.09	71.92 ± 0.57	—	3.6
AC-0.24	dPS <sub>47</sub> PMMA <sub>135</sub> OH	73.99 ± 0.07	78.48 ± 0.77	—	3.5
AC-0.45	dPS <sub>62</sub> PMMA <sub>69</sub> OH	68.39 ± 0.15	74.55 ± 0.78	—	4.3
TA-0.10	dPS <sub>13</sub> PMMA <sub>100</sub> OH	7.32 ± 0.02	13.12 ± 0.14	0.045	6.4
TA-0.19	dPS <sub>33</sub> PMMA <sub>122</sub> OH	9.42 ± 0.02	13.36 ± 0.09	0.042	7.7
TA-0.24	dPS <sub>47</sub> PMMA <sub>135</sub> OH	11.20 ± 0.01	15.28 ± 0.10	0.042	8.9
TA-0.45	dPS <sub>62</sub> PMMA <sub>69</sub> OH	14.48 ± 0.04	19.11 ± 0.12	0.075	11.2
SEA-0.10	dPS <sub>13</sub> PMMA <sub>100</sub> OH	8.72 ± 0.03	—	0.054	10.9
SEA-0.19	dPS <sub>33</sub> PMMA <sub>122</sub> OH	11.42 ± 0.03	—	0.051	10.8
SEA-0.24	dPS <sub>47</sub> PMMA <sub>135</sub> OH	11.46 ± 0.04	—	0.043	11.6
SEA-0.45	dPS <sub>62</sub> PMMA <sub>69</sub> OH	14.29 ± 0.04	—	0.074	12.6
SEC-0.10	dPS <sub>13</sub> PMMA <sub>100</sub> OH	12.99 ± 0.04	—	0.080	5.9
SEC-0.19	dPS <sub>33</sub> PMMA <sub>122</sub> OH	13.04 ± 0.03	—	0.058	6.3
SEC-0.24	dPS <sub>47</sub> PMMA <sub>135</sub> OH	13.59 ± 0.04	—	0.051	7.4
SEC-0.45	dPS <sub>62</sub> PMMA <sub>69</sub> OH	14.57 ± 0.03	—	0.075	14.8

<sup>a</sup> The grafting density was calculated using known molecular volumes.<sup>8</sup> <sup>b</sup> The ruthenium content is the number of ruthenium atoms per 100 carbon atoms in the sample as measured by EDX on the RuO<sub>4</sub> treated samples. The average error in the Ru content is 10% for the AC films and 30% for the TA, SEA and SEC films

5



**Fig. 2** AFM topographic (left) and phase (right) images of (from top to bottom) native TA-0.24, RuO<sub>4</sub> treated TA-0.24, native TA-0.45, and RuO<sub>4</sub> treated TA-0.45.



10

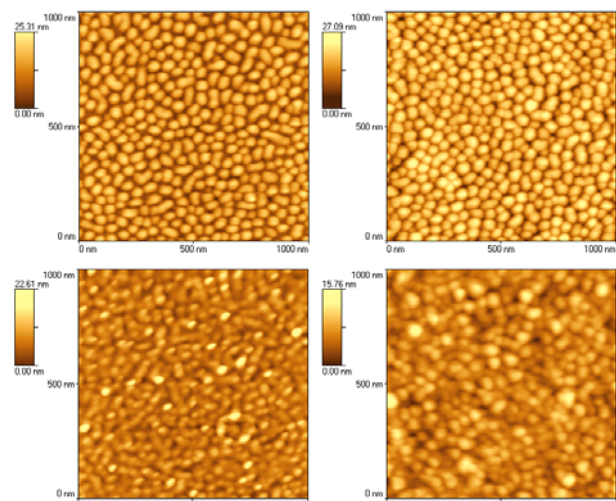
**Fig. 3** Schematic showing the swelling of the dPS domains (grey) upon treatment with RuO<sub>4</sub>.

3).

For the TA-0.24 film, which displays a hexagonal structure, the hemispherical domains of dPS are swollen after RuO<sub>4</sub> treatment leading to bumps on the surface. For the TA-0.45 film, which displays an inverse hexagonal structure where dPS forms a continuous domain perforated by small domains of PMMA after RuO<sub>4</sub> treatment the surface has a mesh-like appearance.

Along with the topographic changes it is apparent that there is a reversal of the contrast in the phase images. For the native films PMMA is the brighter phase,<sup>1</sup> while for the RuO<sub>4</sub> treated films the dPS phase is brighter. This implies that the mechanical properties of the dPS block have been significantly changed by reaction with RuO<sub>4</sub>. The exact mechanism of the reaction of RuO<sub>4</sub> with polystyrene has not been determined, however in general it is known that during the reaction RuO<sub>4</sub> is reduced to RuO<sub>2</sub> with a corresponding oxidation of the polymer.<sup>3</sup>

For the solvent exchanged films, like the AC and TA films, there is no apparent change in either the domain sizes or spacings. Presumably, there are topographic changes to these films upon RuO<sub>4</sub> treatment, however these are harder to identify due to the roughness of the native surface (figure 4 and support information).



**Fig. 4** Topographic AFM images of SEA-0.45 (top) and SEC-0.45 (bottom) as native films (left) and after treatment with RuO<sub>4</sub> (right).

### 5 X-ray Reflectometry

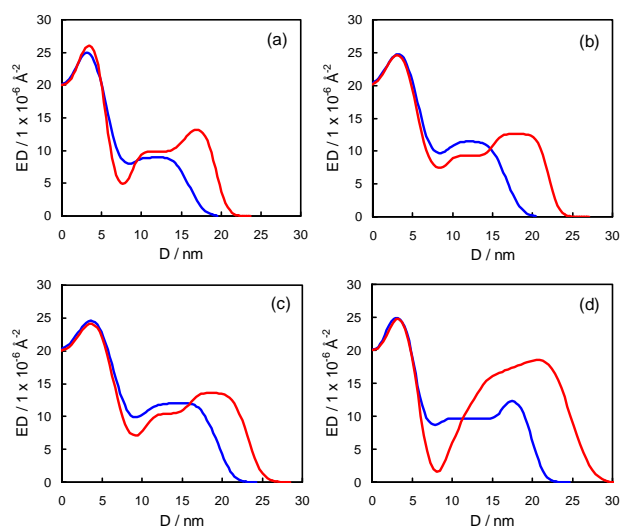
XR was performed on the TA, SEA and SEC films in an attempt to identify the structure of these films normal to the surface. The electron density (ED) profiles for the TA films are shown in figure 5.

For the native TA films, the fits to the XR profiles were reasonable (supporting information available) however the contrast between the dPS and PMMA domains was too small to model these as separate layers for all but the TA-0.45 film, which yielded an ED profile with a denser ~4 nm layer on top of a less dense ~8 nm thick layer. Using bulk data the electron densities of PS and PMMA are estimated to be  $1.108 \times 10^{-5} \text{ \AA}^{-2}$  and  $1.102 \times 10^{-5} \text{ \AA}^{-2}$  respectively.<sup>9</sup> These values would imply the the two layers should be impossible to differentiate, making the TA-0.45 result unusual. However it is likely that the ED values for thin films will differ significantly from those of the bulk state..

That this upper layer corresponds to dPS is indirectly supported by the ED profiles of the other native profiles, in which the ED of the film increases with increasing dPS content. From this trend approximate values for the ED of PMMA and dPS in thin films of  $9 \times 10^{-6} \text{ \AA}^{-2}$  and  $1.2 \times 10^{-5} \text{ \AA}^{-2}$  respectively could be extrapolated.

The thickness of the dPS layer in the TA-0.45 ED profile is smaller than the fraction of dPS in the polymer, which suggests that there is a gradient in the concentration of the two species as one moves deeper into the sample; as would be expected from the modelled phase diagrams.

The lack of contrast the for other TA films is circumvented by treating the films with RuO<sub>4</sub>. Post treatment these film could only be fitted using a two-layer type model with the upper most layer having a significantly higher ED. This is consistent with the incorporation of ruthenium into dPS domains located at the top of the film and confirms the expected 3D structure of the films. The dPS domains are both enlarged after RuO<sub>4</sub> treatment (leading to a net increase in the film thickness) and increase in size with increasing dPS content in line with the ellipsometry results (table 2). For the



**Fig. 5** ED profiles of the native (blue) and RuO<sub>4</sub> treated (red) TA films: (a) TA-0.10, (b) TA-0.19, (c) TA-0.20, and (d) TA-0.45.

now identifiable PMMA layer, it was observed that the thickness was effectively constant for the TA-0.19 and TA-0.24 (both presenting the hexagonal phase), which is consistent with the similar sizes of the PMMA blocks. It was also found that the PMMA layer had an average ED of  $9.8 \times 10^{-6} \text{ \AA}^{-2}$  (excluding the TA-0.45 data), though the value may be increased by small amounts of ruthenium present in these sections of the film.

The fit to the TA-0.45 XR profile was poor and so the corresponding ED profile cannot be considered accurate; the reasons for this are unknown. Absorption of the X-rays by the ruthenium could be an issue; however an attempt was made to improve the fit by varying the adsorption parameters but to no avail. The only information that can therefore be drawn from this profile is the approximate film thickness, which follows the established trend, as this parameter is largely defined by the spacing between the fringes in the profile.

Difficulty was also had with modelling of the SEA and SEC profiles. Here however the roughness of the surface is likely to be the principal problem. Based on the AFM images it would be expected that the apparent ED will decrease away from the substrate due to the large void spaces between adjacent structures. If the ED of a given layer becomes too low then the model may become insensitive to this layer and a fit obtained without it.

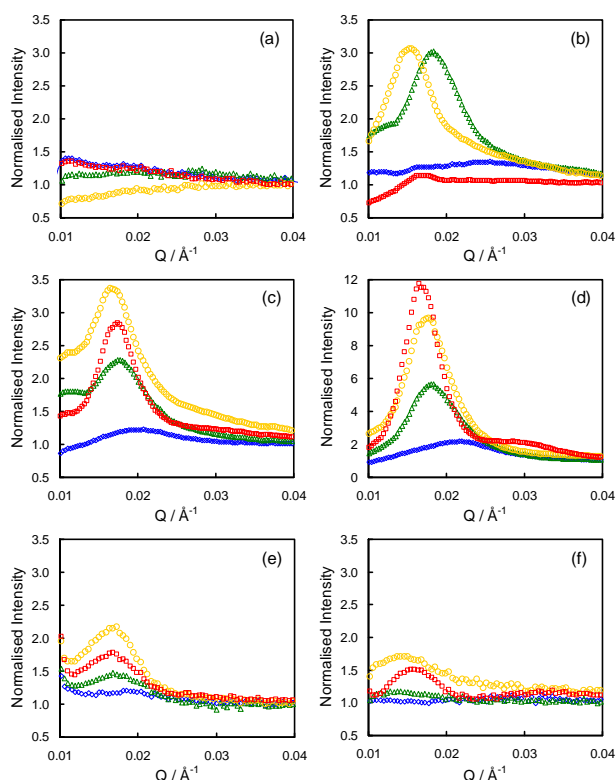
The ability of the stain to enhance the contrast of one of the polymer blocks is equivalent to isotopic substitution in neutron reflectometry and may be considered to be a complementary measurement where isotopic substitution is possible, or an alternative where isotopic substitution and/or access to a neutron facility is difficult.

### In-Plane Scans

In-Plane scans were performed on the various grafted films in order to determine their lateral structures (figure 6).

For the native films relatively strong scattering was observed from the SEA and SEC films. All of the observed peaks were relatively broad due to a combination of a moderately broad





**Fig. 6** In-Plane scans of (a) the native TA films, (b) the RuO<sub>4</sub> treated TA films, (c) the native SEA films, (d) the RuO<sub>4</sub> treated SEA films, (e) the native SEC films, and (f) the RuO<sub>4</sub> treated SEC films. The data for the 0.10 (blue diamonds), 0.19 (green triangles), 0.24 (yellow circles), and 0.45 (red squares) films are shown

incident beam and a low level of ordering in the films. Nevertheless it can be seen in table 3 that for the SEA films the spacing between scattering centres increases with increasing dPS content. The values are also consistent with those determined by FFT analysis of the AFM images, though scattering based figures are generally considered much more robust since they represent averages over a larger region of the sample.

Similarly for the SEC films there was a correlation between

**Table 3** Characteristic spacings for the various films

Film	Native		RuO <sub>4</sub> Treated	
	In-Plane d / nm	AFM <sup>a</sup> period. / nm	In-Plane d / nm	AFM <sup>a</sup> period. / nm
TA-0.10	—	—	—	—
TA-0.19	—	40 (35)	34.3	42 (36)
TA-0.24	—	45 (39)	39.6	51 (44)
TA-0.45	—	51 (44)	36.1	50 (43)
SEA-0.10	30.3	33 (29)	28.3	36 (31)
SEA-0.19	34.9	44 (38)	34.3	51 (44)
SEA-0.24	36.8	48 (42)	35.5	54 (47)
SEA-0.45	35.5	51 (44)	37.4	51 (44)
SEC-0.10	36.8	42 (36)	—	43 (37)
SEC-0.19	36.8	46 (40)	44.7	54 (47)
SEC-0.24	38.8	50 (43)	42.8	56 (49)
SEC-0.45	38.1	50 (43)	38.8	53 (46)

<sup>a</sup> The periodicities were taken from FFT analysis of the AFM images.

The bracketed numbers are the equivalent lattice parameters assuming that a hexagonal unit cell is present.

the measured d-spacings and the dPS content, though this was weaker than in the SEA films. The SEC films also showed good agreement with the AFM results.

Strong scattering was observed for the SEA and SEC films as the contrast between adjacent structures is provided by the difference in the ED of the polymer film and vacuum rather than between the two polymers, which the XR results showed was not large. Subsequently the In-Plane scans on the native TA films did not show any discernable scattering. For these films suitable contrast could only be obtained through the use of the RuO<sub>4</sub> stain.

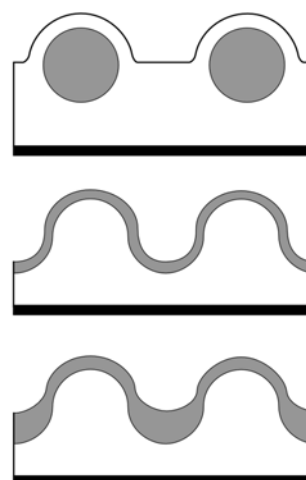
For the RuO<sub>4</sub> treated TA films strong scattering was observed for both the TA-0.19 and TA-0.24 films, with weaker scattering from the TA-0.45 film. As the AFM images showed no significant changes between the pre- and post-RuO<sub>4</sub> treated TA films, it can be concluded that the measured d-spacings for the RuO<sub>4</sub> treated films correspond to the native films as well.

The lack of scattering from the TA-0.10 film is consistent with this film being in the uniform phase.

The most pronounced scattering from all of the samples was obtained with the RuO<sub>4</sub> treated SEA samples, with the SEA-0.45 film displaying the first two peaks of a 2D hexagonal unit cell. For the SEA films it has been proposed that the dPS blocks form aggregates that are encased in a PMMA shell (figure 7).<sup>1, 10</sup> The scattering results reported here are broadly supportive of this hypothesis as the ruthenium stain will increase the ED of the dPS aggregates and thus increase the contrast between the polymer and vacuum.

Conversely, for the SEC films the addition of RuO<sub>4</sub> leads to fewer and weaker peaks in the In-Plane scans. For these films it was proposed that the PMMA formed a textured layer that was covered by a relatively homogenous layer of dPS (figure 7).<sup>1, 10</sup> The apparent loss of structure from these films cannot be attributed to large scale destruction of the order of the film as this is not supported by the AFM images. It is possible however to rationalise the changes by considering how the dPS portions of the film swell upon treatment with RuO<sub>4</sub>.

In considering the schematic of the SEC films shown in figure



**Fig. 7** Schematics of structures of the SEA (top) and SEC (middle) films, and the SEC films after treatment with RuO<sub>4</sub> (bottom).

7, it can be seen that the curvature of the overlying dPS layer depends on whether the dPS is on top of the PMMA 'hills' or located in the 'valleys' between the 'hills'; a factor that will impact on how the dPS layer expands upon reaction with RuO<sub>4</sub>. For a flat film, expansion occurs only normal to the surface, with the height change of the film being proportional to the volume change, however the film thickness change becomes non-linear with volume change for curved surfaces. For a convex surface, such as that presented by the dPS portions on top of the PMMA 'hills', expansion of the film can occur both laterally and normal to the surface, subsequently the film thickness change (measured normal to the surface) will be smaller than the total volume change. For a concave surface, such as that present in the 'valleys', only expansion normal to the surface can occur; indeed, as adjacent parts of the dPS film will be trying to expand into the same space the thickness has to increase by more than the total volume to accommodate any expansion. It would therefore be expected that swelling of the dPS layer will give a thicker dPS layer in the 'valleys' than on the 'hills' leading to a smoothing-out of the surface (figure 7). As contrast in this system comes from the difference between the polymeric hills and the air surrounding them, the increased thickness of the dPS film in the 'valleys' will tend to reduce the overall contrast, leading to smaller scattering peaks.

The filling-in of the 'valleys' will also be dependent on the local curvature. For those areas with high curvature (i.e. where the spacing between adjacent PMMA 'hills' is small), the film thickness increase will be relatively larger. Coherent scattering from these features will subsequently be relatively less strong than from 'hills' spaced further apart, which will shift the scattering peak to lower Q values/higher d values, as was observed here (table 3).

An unexpected result reported in table 2, was the relatively high ruthenium content of the SEA films relative to the SEC and TA films. The reason for this is unknown, though it may be related to the packing of the dPS chains following forced precipitation from solution as opposed to the more equilibrium structures produced after thermal annealing or the evaporation of a good solvent. Alternatively the PMMA overlayer may influence the adsorption and reaction of RuO<sub>4</sub>.

## Conclusions

Following on from previous work where we examined the microphase separation behaviour of several tethered dPS-*b*-PMMA films we report here the related X-ray scattering results.

For films treated by thermal annealing contrast between the two blocks could only be achieved by reacting the film with a novel contrast enhancer. Due to the pseudo 2D nature of the phase separation within these films the staining procedure, while increasing the thickness of the dPS domains, did not significantly alter the lateral structure and periodicity of the films. Subsequently, the d-spacing measured for the RuO<sub>4</sub> treated films are applicable to the native films as well. The stain also helped to confirm phase assignments previously made by AFM.

Normal to the surface the use of the stain confirmed that the

dPS domains are located at the air/film interface in line with the expected behaviour.

The periodicities of films treated with a solvent exchange process were also measured. Though a stain was not required to get coherent scattering from these films it did enable the identification of higher order peaks in one of the samples.

## Acknowledgements

The authors thank Dr Oier Bikondoa, ESRF, for his help with the synchrotron experiments; Drs Peter Harris and Chris Stain of the Centre for Advanced Microscopy, University of Reading, for their help with the RuO<sub>4</sub> treatment and EDX results.; and Prof Joe Keddie, University of Surrey for the use of his ellipsometer. This work was supported by EPSRC grant EP/F029616/1. Part of this work was performed on the EPSRC-funded XMaS beamline at the ESRF

## Notes and references

- <sup>a</sup> Address, Department of Chemistry, University of Reading, Whiteknights, Reading, UK, RG6 6AD Fax: + 44 (0)118 378 8450; Tel: +44 (0)118 378 7449; E-mail: b.odriscoll@reading.ac.uk
- <sup>b</sup> Address, XMaS, The UK-CRG, European Synchrotron Radiation Facility, 6 rue Jules Horowitz, BP220, 38043 Grenoble Cedex, France. Tel: +33 (0)4 76 88 24 36; E-mail: gemma.newby@esrf.fr
- Electronic Supplementary Information (ESI) available: AFM images of all of the samples discussed, full ellipsometric results and the XR profiles (with fits) for the TA films.
1. B. M. D. O'Driscoll, G. H. Griffiths, M. W. Matsen, S. Perrier, V. Ladmiral and I. W. Hamley, *Macromolecules*, in press
2. M. W. Matsen and G. H. Griffiths, *Eur. Phys. J. E*, 2009, 29, 219-227.
3. H. G. Haubruge, A. M. Jonas and R. Legras, *Polymer*, 2003, 44, 3229-3234.
4. S. M. Park, S. H. Yun and B. H. Sohn, *Macromol. Chem. Phys.*, 2002, 203, 2069-2074.
5. R. W. Smith and V. Bryg, *Rubber Chem. Tech.*, 2006, 79, 520-540.
6. T. M. Chou, P. Prayoonthong, A. Aitouchen and M. Libera, *Polymer*, 2002, 43, 2085-2088.
7. S. M. Danauskas, D. Li, M. Meron, B. Lin and K. Y. C. Lee, *Appl. Crystal.*, 2008, 41.
8. J. E. Mark, ed., *Physical Properties of Polymers Handbook*, 2nd edn., Springer, New York, NY, USA, 2007.
9. J. Brandrup and E. H. Immergut, eds., *Polymer Handbook*, 3rd edn., John Wiley & Sons, New York City, NY, USA, 1989.
10. B. Zhao, W. J. Brittain, W. Zhou and S. Z. D. Cheng, *J. Am. Chem. Soc.*, 2000, 122, 2407-2408.