

Direct visualisation of lipid bilayer cubic phases using Atomic Force Microscopy

Article

Accepted Version

Rittman, M., Frischherz, M., Burgmann, F., Hartley, P. G. and Squires, A. (2010) Direct visualisation of lipid bilayer cubic phases using Atomic Force Microscopy. *Soft Matter*, 6 (17). pp. 4058-4061. ISSN 1744-683X doi: <https://doi.org/10.1039/c002968h> Available at <https://centaur.reading.ac.uk/16745/>

It is advisable to refer to the publisher's version if you intend to cite from the work. See [Guidance on citing](#).

Published version at: <http://dx.doi.org/10.1039/c002968h>

To link to this article DOI: <http://dx.doi.org/10.1039/c002968h>

Publisher: Royal Society of Chemistry

Publisher statement: Reproduced by permission of The Royal Society of Chemistry (RSC)

All outputs in CentAUR are protected by Intellectual Property Rights law, including copyright law. Copyright and IPR is retained by the creators or other copyright holders. Terms and conditions for use of this material are defined in the [End User Agreement](#).

www.reading.ac.uk/centaur

CentAUR

Central Archive at the University of Reading

Reading's research outputs online

Direct visualisation of lipid bilayer cubic phases using Atomic Force Microscopy

Martyn Rittman^a, Martina Frischherz^{b,c}, Flame Burgmann^b, Patrick G. Hartley^b, Adam Squires^{*a}

Received (in XXX, XXX) Xth XXXXXXXXXX 200X, Accepted Xth XXXXXXXXXX 200X

First published on the web Xth XXXXXXXXXX 200X

DOI: 10.1039/b000000x

Inverse bicontinuous cubic (Q_{II}) phases are nanostructured materials formed by lipid self-assembly. We have successfully imaged thin films of hydrated Q_{II} phases from two different systems using AFM. The images show periodic arrays of water channels with spacing and symmetry consistent with published SAXS data on the bulk materials.

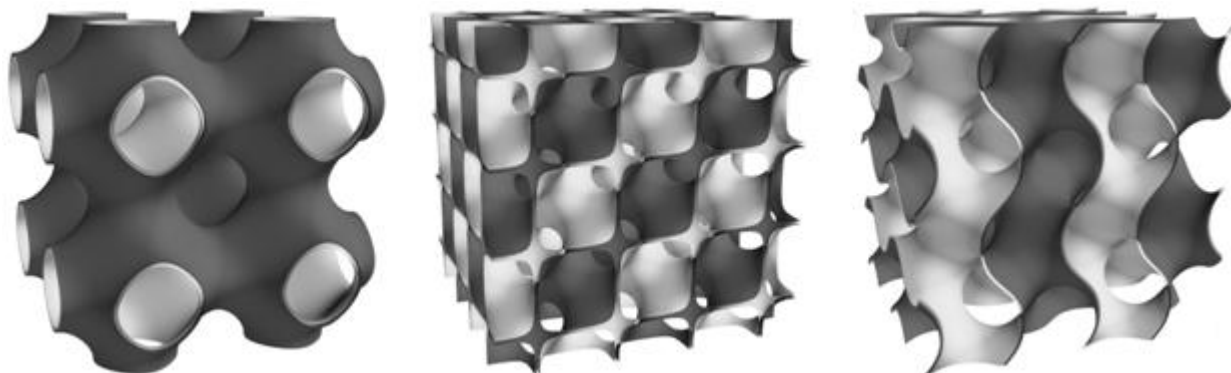


Fig. 1. Cubic phase structures. Left to right, the primitive (P), double diamond (D) and gyroid (G) triply periodic minimal surfaces. All three consist of two connected water channel networks (dark grey and white).

A number of amphiphilic systems are known to be capable of forming Q_{II} phases, where the amphiphile molecules form an intricately curved fluid bilayer, on either side of which lie two interpenetrating continuous networks of water channels. In each Q_{II} phase, a mathematical surface known as a triply periodic minimal surface lies at the middle of the lipid bilayer. Lipid systems form three Q_{II} phases, based on the primitive (P), double diamond (D), and gyroid (G) surfaces, and known respectively as the Q_{II}^P , Q_{II}^D and Q_{II}^G phases (see Fig. 1). As materials, Q_{II} phases are optically transparent, stiff, visco-elastic solids^{1,2} that are stable in excess water.

The structures of Q_{II} phases possess a number of remarkable features that have significant potential for nanotechnological applications. They contain water channels of the order of 2-5nm in diameter, whose size is extremely uniform throughout the sample, the dimensions of which may be tuned by controlling the temperature (in excess water) or the lipid/water ratio (below excess water).³ The structure also provides an extremely efficient way of packing a very large contiguous surface area into a small volume. Such properties make these, and similar structurally analogous materials, promising candidates in applications where they may be templated for size-selective molecular sieves or catalysts,⁴ or for electronic applications.⁵ Since the constituent lipids

themselves are non-toxic, naturally-occurring biological molecules they are suitable for applications in food,⁶ pharmaceuticals⁷ and cosmetics,⁸ where the bicontinuous structure may be used to store and deliver both hydrophobic and hydrophilic molecules. Finally, since the bilayer is very similar to a biological cell membrane, Q_{II} phases are of biological interest, leading to their use in methodologies for membrane protein crystallization.⁹ Furthermore, in nature these are naturally-occurring structures that perform a number of important biological roles¹⁰ and the mechanism of their formation from the lamellar phase is considered to be a model for the mechanism of bio-membrane fusion and fission.²

Much of our current understanding of Q_{II} phases comes from data obtained with small-angle x-ray scattering (SAXS). These give the symmetry from which the different Q_{II} phases may be discriminated and a very precise measurement of the lattice parameter. On the basis of SAXS experiments, we now have a good understanding of the thermodynamic and geometric factors on which these depend. More recent, time-resolved synchrotron SAXS experiments¹¹ have yielded data investigating the kinetics and mechanisms of the processes that interconvert the Q_{II} phases and by which they are formed from the fluid lamellar phase, with direct relevance to biological processes such as membrane fusion and fission.

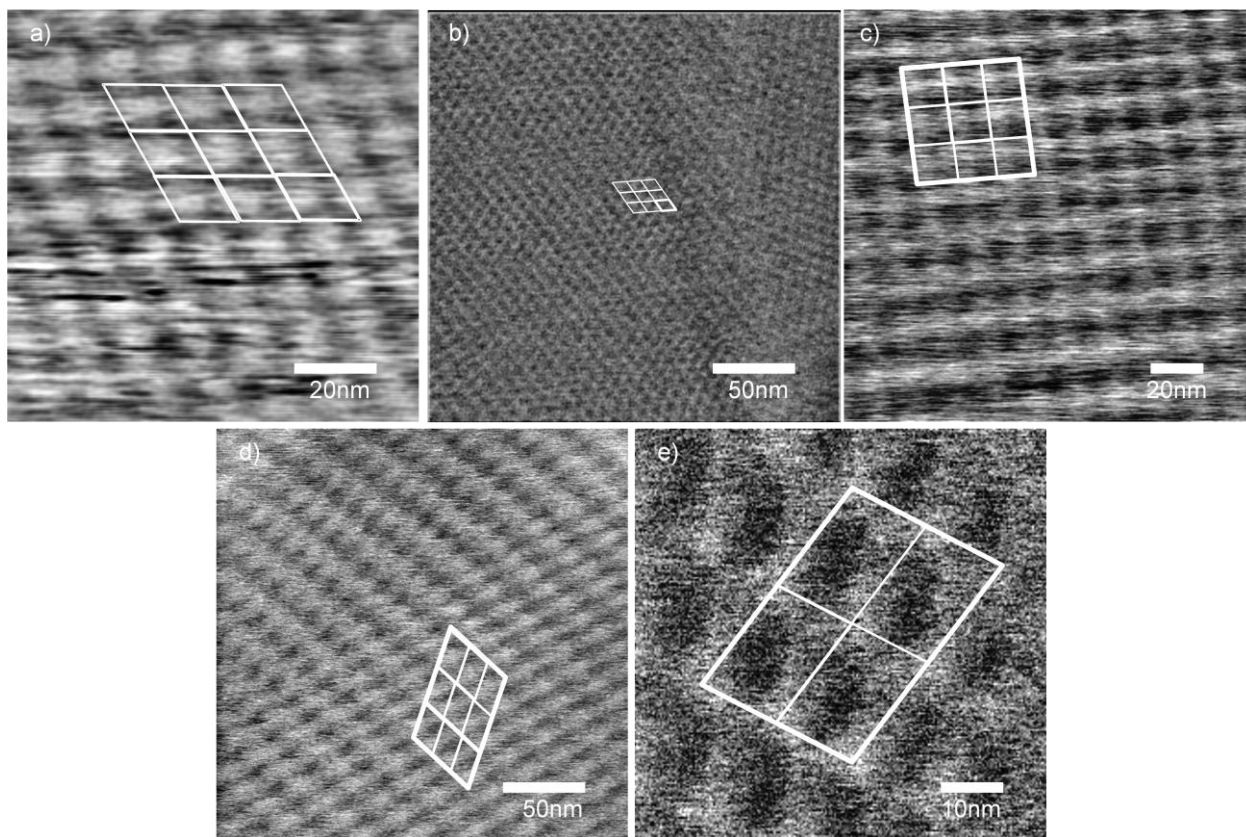


Fig 2. AFM non-contact mode images of Q_{II} phases in excess water. All are height images, except b) and e) which show phase. a) and d) are from monoolein and b), c) and e) from phytantriol. Unit cell lattices have been drawn on. Using the right-hand axis convention, with lattice vectors listed anti-clockwise about the obtuse angle, the dimensions of these lattices are as follows: (a): 14.4nm; 12.8nm; 120°. (b): 8.3nm; 6.9nm; 120°. (c): 14.2nm; 14.2nm; 92°. (d): 25.0nm; 15.3nm; 115°. (e): 19.7nm; 13.6nm; 100°.

However, SAXS typically averages over many randomly oriented micron-sized domains. The data therefore provide no information on the interface of the Q_{II} phase with water, or of the boundary between adjacent domains; domain boundaries and defects are likely to affect technological applications, visco-elastic properties¹² and phase transition kinetics.¹¹ Nor do SAXS experiments give information on the orientation of individual domains that can provide data on the epitaxy of transformations, to support or disprove various proposed geometrical transformation mechanisms.^{11,13}

A number of groups have successfully imaged individual “cubosomes”, representing discrete single domains of Q_{II} phase, using cryo-TEM.¹⁴ These particles themselves have a number of applications in, for example, drug delivery. However, it is not clear to what extent they are representative of domains within a bulk polydomain sample, in particular as their stabilization requires a co-surfactant that forms an additional bilayer around each cubosome. Finally, the technique of cryo-TEM itself is a static one, and cannot be used to obtain dynamic information on phase transformations.

Atomic Force Microscopy (AFM) has the potential to overcome the limitations associated with both techniques. It gives direct visualization, and has sufficient spatial resolution to image individual water channels within a single domain, thus providing information on domain orientation and epitaxy, and domain boundaries (unlike bulk SAXS). It can be carried

out under ambient conditions, in a temperature range consistent with equilibrium lyotropic phase formation, under water or in air, and thus has potential for structural analysis of Q_{II} phases, both at equilibrium and during phase transitions.

Although AFM has been used extensively for single bilayers, very little work has been carried out on non-lamellar structures.¹⁵

In this work, we investigate two different systems; 1-monoolein (MO , $CH_3(CH_2)_7CH=CH(CH_2)_7COOCH_2CHOHCH_2OH$) and phytantriol ($CH_3(CHCH_3(CH_2)_3)_3CCH_3OHCHOHCH_2OH$). Both of these have well characterized phase behaviour and both form Q_{II}^D phases at room temperature in excess water¹⁸

We demonstrate that we can use AFM to image both of these with sufficient resolution to resolve individual water channels and that the spacing and symmetry of these are consistent with published data obtained using SAXS on bulk polydomain samples from each system. Fig 2 shows AFM images of phytantriol and monoolein. We should note that due to tip broadening, the images do not give meaningful height data on individual water channels (indeed 2(b) and 2(e) are phase images). However, they do show the spacing and arrangement of the water channel arrays. We have drawn unit cells onto the images, and included lattice dimensions and angles in the figure legend. Fig 2 (a) and the left hand side of (b) show features that

appear to lie in slightly distorted hexagonal arrays, with apparent spacings of approximately 14 ± 1 nm and 8 ± 1 nm respectively. Fig 2 (c)-(e) show arrays with other symmetries.

Fig 2 (d) appears to show a disclination, and Fig 2 (b) shows different lattices on the left and right sides of the image. Both appear to be consistent with domain boundaries, confirming our expectation that, in contrast to SAXS, AFM can be used for imaging and characterising domain boundaries of Q_{II} phases.

10

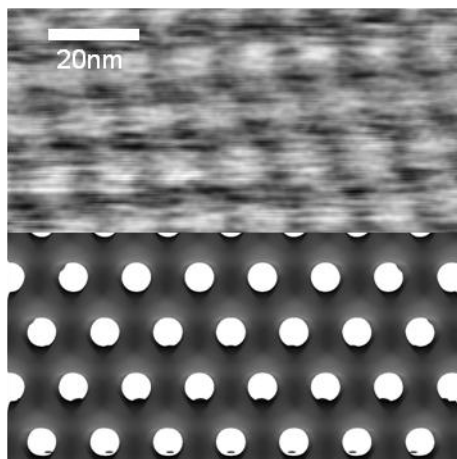
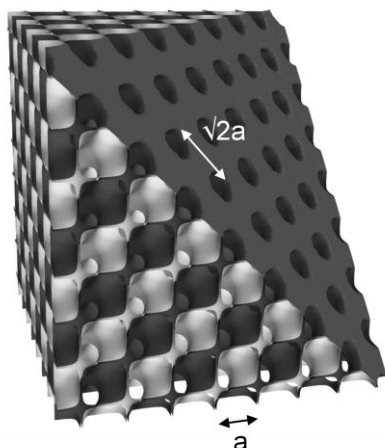


Fig.3 The (111) planes through the diamond surfaces. The light and dark surfaces represent the two water channel networks. The white channel network is capped at the surface, and the dark open to the outside, as discussed in the text. Also shown are the spacings of the water channels at the surface and the lattice parameter, a .

The hexagonal structures shown in Fig 2 (a) and (b) are consistent with the 111 plane through the unit cell being uppermost (see Fig 3). Larsson and co-workers¹⁷ suggest that, in order that the bilayer should remain continuous, one of the networks of water channels is “capped” by the bilayer, and that only the other network is open to the bulk water; this is what we expect to observe from the top surface (Fig 3). Given this assumption, we expect the spacing of features on this plane to be equal to a where a is the lattice parameter. (Figure 3 shows a graphical justification of this; essentially, for a Q_{II} lattice with cubic unit cells of side a , the spacing between features on the (111) AFM image is the distance between adjacent unit cell centres for the same colour network; this is equal to the face diagonal of the unit cell, $a\sqrt{2}$).

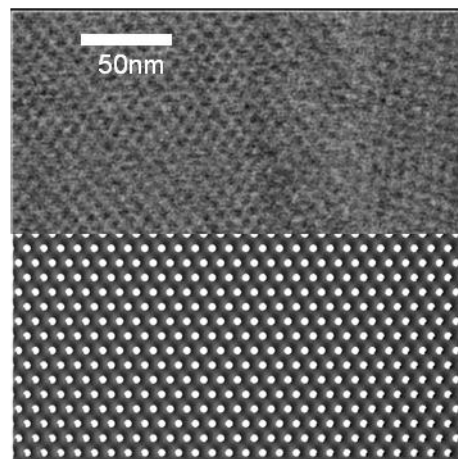


Fig. 4 Simulations of a diamond isosurface capped off at a 111 plane (lower half) and corresponding AFM images from Figures 2a and b (upper half). Each isosurface is plotted on the same scale as its corresponding AFM image, with lattice parameter 10.0 nm (left) and 6.5 nm (right) corresponding to the literature values for lattice parameters at room temperature in excess water of monoolein and phytantriol respectively.

We can therefore estimate values for the lattice parameter a for monoolein and phytantriol from Fig 2 (a) and (b), to be the feature spacing divided by $\sqrt{2}$. This gives values for monoolein and phytantriol of $a = 10 \pm 1$ nm and 6 ± 1 nm respectively. These are in good agreement with published bulk measurements of the surfactants in excess water obtained using SAXS, which are 10 nm for monoolein¹⁸ and 6.4-6.6 nm for phytantriol.¹⁹ There are a number of sources of error for the values we have measured from AFM, including local variation of spacings, drift during AFM measurement and batch-to-batch variation of the surfactants (as compared with that used for the bulk measurements quoted).

Fig 4 shows computer simulated images corresponding to

the size of the AFM images in Fig 2 (a) and (b), generated with literature values of lattice parameter. These provide a visual confirmation that the hexagonal spacings observed in Fig 2 are consistent with the 111 plane.

Experimental Section

Phytantriol was obtained from DSM nutritional products, Germany. Glycerol mono-oleate (MO) was obtained from Sigma Aldrich, St Louis. Purities were quoted at 95% and 99% respectively and they were used as received. Each was dissolved in chloroform (Merck, Whitehouse Station, NJ) at a final concentration of 10 mg/ml.

60

Highly ordered pyrolytic graphite (HOPG, Agar Scientific Ltd, Stansted, UK) with mosaic spread 3.5 ± 1.5 , and size 10 mm by 10 mm was cleaved and used immediately.

Both surfactants were spin coated onto HOPG. Spin coating was carried out at 2000 rpm on a Headway Research (Garland, Texas) instrument. A single drop, approximately 10 μ l, was placed into the centre of the spinning substrate from a glass pipette. The substrate was left spinning for approximately a further 30 s to allow for the solvent to evaporate. Successful deposition was characterised by a blue/purple film visible across the substrate surface, suggesting thicknesses on the order of the wavelength of light. AFM images obtained across a gap in the coating in one film indicated a varying thickness of at least 60nm. Spin coated substrates were immediately transferred into MilliQ water for a period of at least one hour, and overnight if possible, to hydrate.

A Digital Instruments/Veeco Multimode Nanoscope III AFM (Digital Instruments, Santa Barbara, California) was used to record height and phase tapping mode images with a 10 μ m scanner unit. DNP-S10 (Veeco, Camarillo, California) AFM tips were used within the standard tapping mode fluid flow cell, in an excess of MilliQ water. Images were 512 x 512 pixels. The nominal tip radius quoted by the manufacturer was 10nm.

AFM data were processed to highlight image features using the software provided with the instrument. Typically the images were flattened and a plane fit applied. A combination of lowpass filtering (to remove high frequency image artefacts) and contrast enhancement were also employed.

To generate a simulated version of surfaces of the unit cell of the diamond Q_{II} surface, the following equation was used:¹⁶

where x and y are the coordinates of a point in the unit cell and V is a parameter controlling the volume of the resultant structure. An isosurface ($V = V_0$) is the Q_{II} structure where the top surface is the '111' section.

Coordinates for isosurfaces through the unit cell of a diamond lattice were calculated using Python 2.5 (including Scipy 0.6) and plotted using Mayavi2.

Conclusions

In conclusion, we have demonstrated that we can produce thin films of Q_{II} phase, and use these to image the water channels within using AFM. The data show good agreement with published behaviour of bulk Q_{II} phase samples measured by SAXS, showing the orientation of single domains, which could not be done with bulk SAXS measurements, and supporting a proposed model for the interface with water. AFM on thin Q_{II} films clearly shows potential for resolving a number of outstanding questions relating to domain size, structure and epitaxy in such systems.

Acknowledgements

We thank Prof. Marcus Textor, ETH Zurich, for facilitating Martina Frischherz's visit to CSIRO, Australia, and Celesta Fong at CSIRO for helpful discussions.

Notes and references

- ^a Department of Chemistry, University of Reading, Whiteknights, Reading, RG6 6AH, UK; E-mail: a.m.squires@reading.ac.uk
- ^b CSIRO Molecular & Health Technologies, Bag 10, Clayton South, Victoria 3169, Australia.
- ^c BioInterface Group, Laboratory for Surface Science and Technology, ETH Zurich, CH-8093 Zurich, Switzerland
- 1 P. Spicer, K. Hayden, M. Lynch, A. Ofori-Boateng, and J. Burns, *Langmuir*, 2001, 17, 5748–5756.
- 2 D. P. Siegel and M. Kozlov, *Biophys J*, 2004, 87, 366–374.
- 3 R. H. Templer, J. M. Seddon, N. A. Warrender, A. Syrykh, Z. Huang, R. Winter, and J. Erbes, *J Phys Chem B*, 1998, 102, 7251–7261.
- 4 R. Holyst, *Nat Mater*, 2005, 4, 510–1.
- 5 V. N. Urade, T. Wei, M. P. Tate, J. D. Kowalski, and H. W. Hillhouse, *Chem Mater*, 2007, 19, 768–777.
- 6 R. Mezzenga, P. Schurtenberger, A. Burbidge, and M. Michel, *Nat Mater*, 2005, 4, 729–40.
- 7 C. J. Drummond and C. Fong, *Curr Opin Colloid In*, 1999, 4, 449–456.
- 8 P. Spicer, M. Lynch, S. Hoath, and M. Visscher, in *Delivery system handbook for personal care and cosmetic products: technology, applications, and formulations Breakthroughs in personal care and cosmetic technology*, M. R. Rosen, William Andrew, 2005, pp. 604–620.
- 9 M. L. Chiu, P. Nollert, M. Loewen, H. Belrhali, E. Pebay-Peyroula, J. Rosenbusch, and E. Landau, *Acta Crystallogr D Biol Crystallogr*, 2000, 56, 781–784.
- 10 V. Luzzati, *Curr Opin Struc Biol*, 1997, 7, 661–668.
- 11 A. Squires, R. H. Templer, J. M. Seddon, J. Woenkhaus, R. Winter, T. Narayanan, and S. Finet, *Phys Rev E*, 2005, 72, 11502.
- 12 J. Jones and T. McLeish, *Langmuir*, 1995, 11, 785–792.
- 13 D. P. Siegel, *Biophys J*, 2008, 95, 5200–15.
- 14 J. Gustafsson, H. Ljusberg-Wahren, M. Almgren, and K. Larsson, *Langmuir*, 1996, 12, 4611–4613.
- 15 C. Neto, G. Aloisi, P. Baglioni, and K. Larsson, *Journal of Physical Chemistry B*, 1999, 103, 3896–3899.
- 16 S. Andersson, M. Jacob, S. Lidin, and K. Larsson, *Z Kristallogr*, 1995, 210, 315–318.
- 17 K. Larsson, *Curr Opin Colloid In*, 2000, 5, 64–69.

18 J. Briggs, H. Chung, and M. Caffrey, *J. Phys. II France*, 1996, 6, 723–751.

20 A. Squires, R. H. Templer, J. M. Seddon, J. Woenckhaus, R. Winter,
s S. Finet, and N. Theyencheri, *Langmuir*, 2002, 18, 7384–7392.

19 J. Barauskas and T. Landh, *Langmuir*, 2003, 19, 9562–9565.